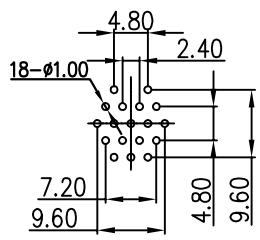
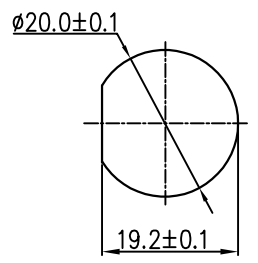


REV.	ECN NO.	DESCRIPTION	SIGN	DATE
C1	N/A	INITIAL DRAWING	Liu	2020/05/13

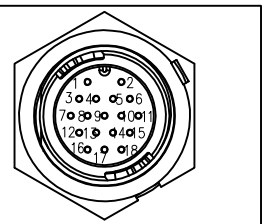


18 Pin  
PCB Layout



Recommended Panel Cut-Out

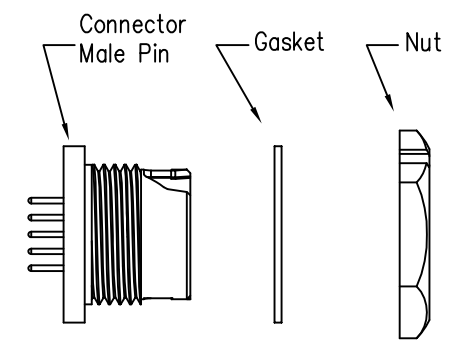
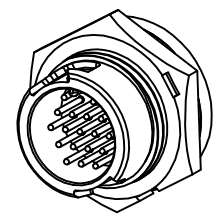
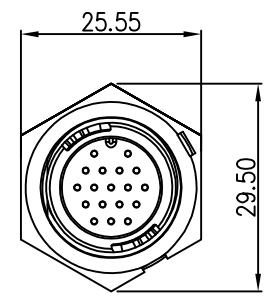
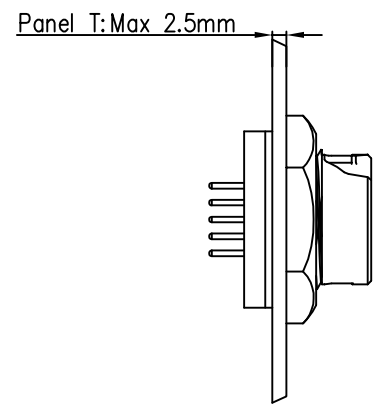
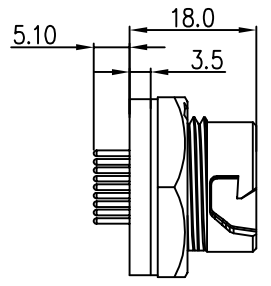
23XXX535-02  
Pin Number



18 Pin

P/N: 23018535-02

Pin Assignments  
Front View



- Specification:
- 1.Operation Temperature: -45°C~105°C.
  - 2.Insulation Resistance:100MΩ at DC500V.
  - 3.Contact Resistance:<10mΩ.
  - 4.Withstand Voltage: 1000V AC
  - 5.Operating Current: 2A
  - 6.Operating Voltage:DC 30V
  - 7.Waterproof Rate:IP67 (Mated)
  - 8.Housing:Nylon, Black
  - 9.Male Pin:Copper Alloy, Gold Plated
  - 10.Gasket:Silicon Gray
  - 11.Panel Nut:Nylon, Orange
  - 12.Torque Rate:0.8~1.0N·m
  - 13.RoHS Compliant.
  - 14.Mating Cap P/N:806-00047-00

UNIT:mm TOLERANCE .X ±0.25 .XX ±0.15 .XXX ±0.05 ANGLES ±1°	DESCRIPTION Middle Series Push Lock Front Mount With Male Pin			PART NO	23018535-02	DRAWN BY	Liu	DATE	2020/05/17		
	SCALE	1:1		SHEET	1 OF 1	DWG NO		CHECKED BY	Mo	DATE	2020/05/17
	REV.	C1		SIZE	A4	CUSTOMER		APPROVED BY	Adley	DATE	2020/05/17

THIS INFORMATION IS CONFIDENTIAL AND IS DISCLOSED TO YOU ON CONDITION THAT NO FURTHER DISCLOSURE IS MADE BY YOU TO OTHER THAN CHOGORI PERSONNEL WITHOUT AUTHORIZATION FROM CHOGORI CORP.