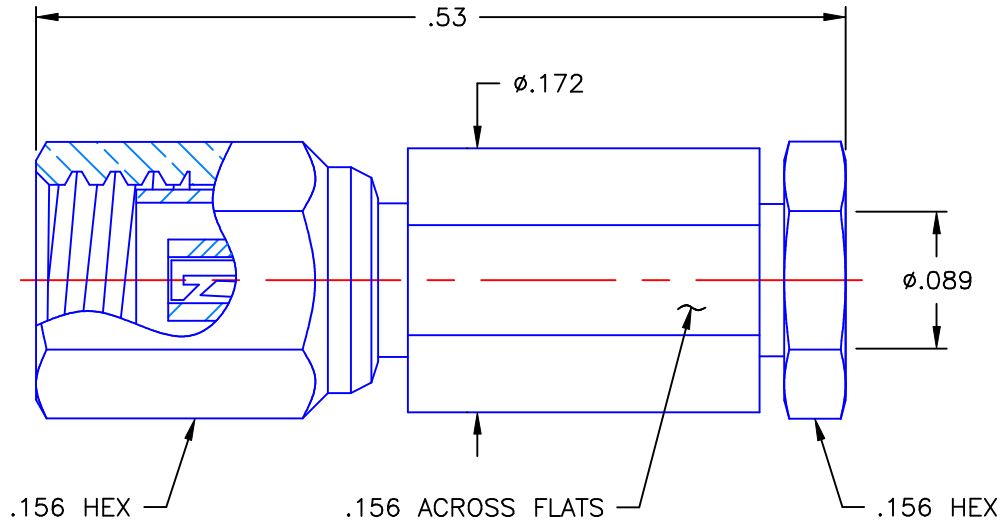


REVISIONS			
REV	DESCRIPTION	DATE	APPROVED
A	INITIAL RELEASE	02/09/09	D.N.



NOTES:


MATERIALS:

1. INSULATORS = VIRGIN WHITE TEFLON PER ASTM D1710, GRADE 1, TYPE I, CLASS "B".
2. BACK NUT = BRASS PER ASTM B16, ALLOY C36000, TEMPER H02.
3. ALL OTHER METAL PARTS = BERYLLIUM COPPER PER ASTM B196, ALLOY C17300, TEMPER TD04.

FINISHES:

1. CONTACT = GOLD PLATE PER MIL-G-45204, TYPE II, CLASS 1, GRADE C, OVER .00010 TO .00020 STRESS FREE SULFAMATE NICKEL PER QQ-N-290.
2. ALL OTHER METAL PARTS = GOLD PLATE PER MIL-G-45204, TYPE II, CLASS 0, GRADE C, OVER .00010 TO .00020 COPPER STRIKE PER MIL-C-14550.

Property of Radiall Incorporated
 This document cannot be reproduced or
 communicated to a third party without prior
 written permission of RADIALL Incorporated.

UNLESS OTHERWISE SPECIFIED DIMENSIONS ARE IN INCHES TOLERANCES ON	DWN:	DATE	 APPLIED ENGINEERING PRODUCTS 104 John W. Murphy Dr. New Haven, CT 06513
	D.N.	02/09/09	
	CHKD:	DATE	
DECIMAL	ANGLE	A.D.M.	02/09/09
		APVD:	DATE
		J.M.	02/09/09
REFERENCE:	MATERIALS & FINISHES:		SSMC STRAIGHT FEMALE PLUG SOLDER/CLAMP TYPE FOR .085 S/R & SIMILAR CABLES
ORIGINATOR: D.N. DATE: 02/09/09	SEE NOTES		SIZE: A FSCM NO.: 19505 DWG NO.: 7002-1541-010 SCALE: 8:1 THIRD ANGLE PROJECTION
			REV: A SHEET 1 OF 1

7002-1541-010