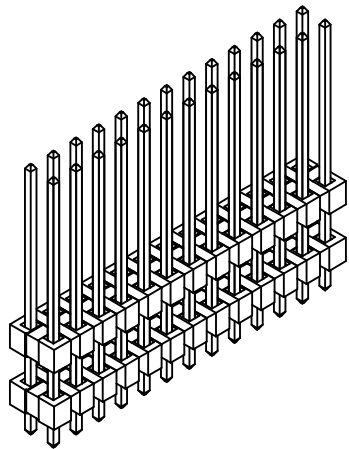
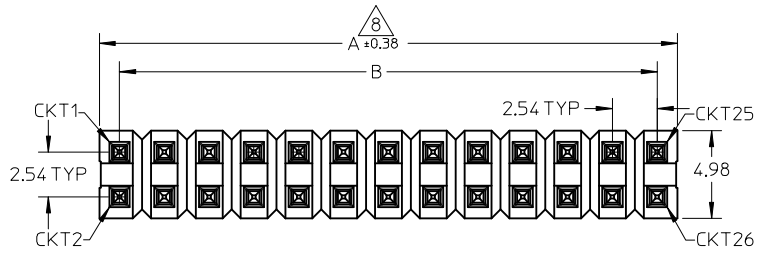
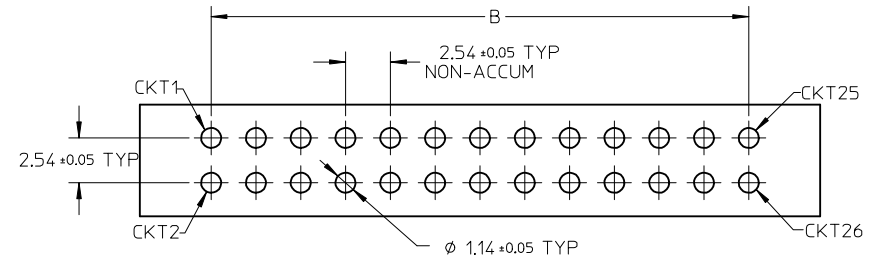
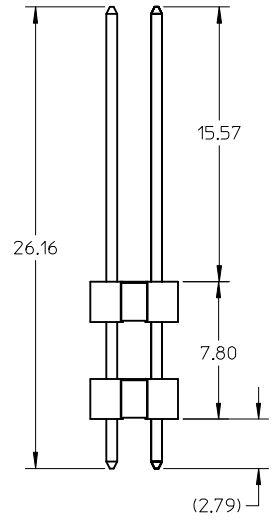
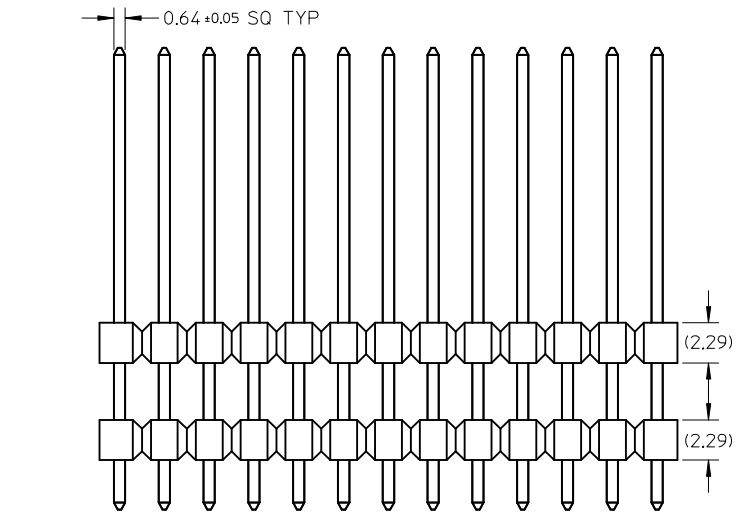


PART NO FOR TRAY PACKAGING	CKT SIZE	P E G	VOID PIN POSITION	DIMENSION	
				A	B
87797-0026	26	N	-----	33.02	30.48



NOTES

- MATERIAL:
HSG: LCP, GLASS-FILLED, UL94V-0,
COLOR, BLACK
PIN: COPPER ALLOY 0.64 mm SQ.
- PLATING TYPE:
0.254µm/10µm MIN GOLD IN CONTACT AREA OVER
1.900µm/75µm MIN TIN SELECTIVE IN SOLDER AREA BOTH OVER
1.270µm/50µm NICKEL OVERALL
- PARTS TO BE PACKED IN TRAY
- PCB THICKNESS 1.6+/-0.10mm
- PRODUCT SPECIFICATION: PS-87920-019
- WAFER TO BE FLAT WITHIN 0.003 mm/mm
- PART IS NOT STACKABLE ON 2.54 CENTER
- IRREGULAR CIRCUIT CUTOFF WITHIN BREAKAWAY SECTION IS PERMISSIBLE. CUTTING OR CHIPPING OF THE MAIN BODY IS NOT ACCEPTABLE



EC NO: S2006-1078 DRWN:SKL IM01 CHKD:CWLAM APPR:PATEY 2006/05/03	DESCRIPTION 2006/05/03	QUALITY SYMBOLS	GENERAL TOLERANCES (UNLESS SPECIFIED)	DIMENSION STYLE	SCALE	DESIGN UNITS	THIRD ANGLE PROJECTION
		$\nabla=0$ $\text{C}=0$	(UNLESS SPECIFIED) mm INCH	MM ONLY	NTS	METRIC	
		4 PLACES ± --- ± --- 3 PLACES ± --- ± --- 2 PLACES ± 0.2 ± --- 1 PLACE ± --- ± ---	DRAWN BY SKL IM01 DATE 2006/04/20 CHECKED BY CWLAM DATE 2006/04/28 APPROVED BY PATEY DATE 2006/04/28	TITLE	CUSTOM HEADER 2.54MM PITCH DUAL ROW HEADER, THRU HOLE, 26CKT		
		ANGULAR ± 3 °	MATERIAL NO. SEE TABLE DRAFT WHERE APPLICABLE MUST REMAIN WITHIN DIMENSIONS	DOCUMENT NO. SD-87797-178 SHEET NO. 1 OF 1			