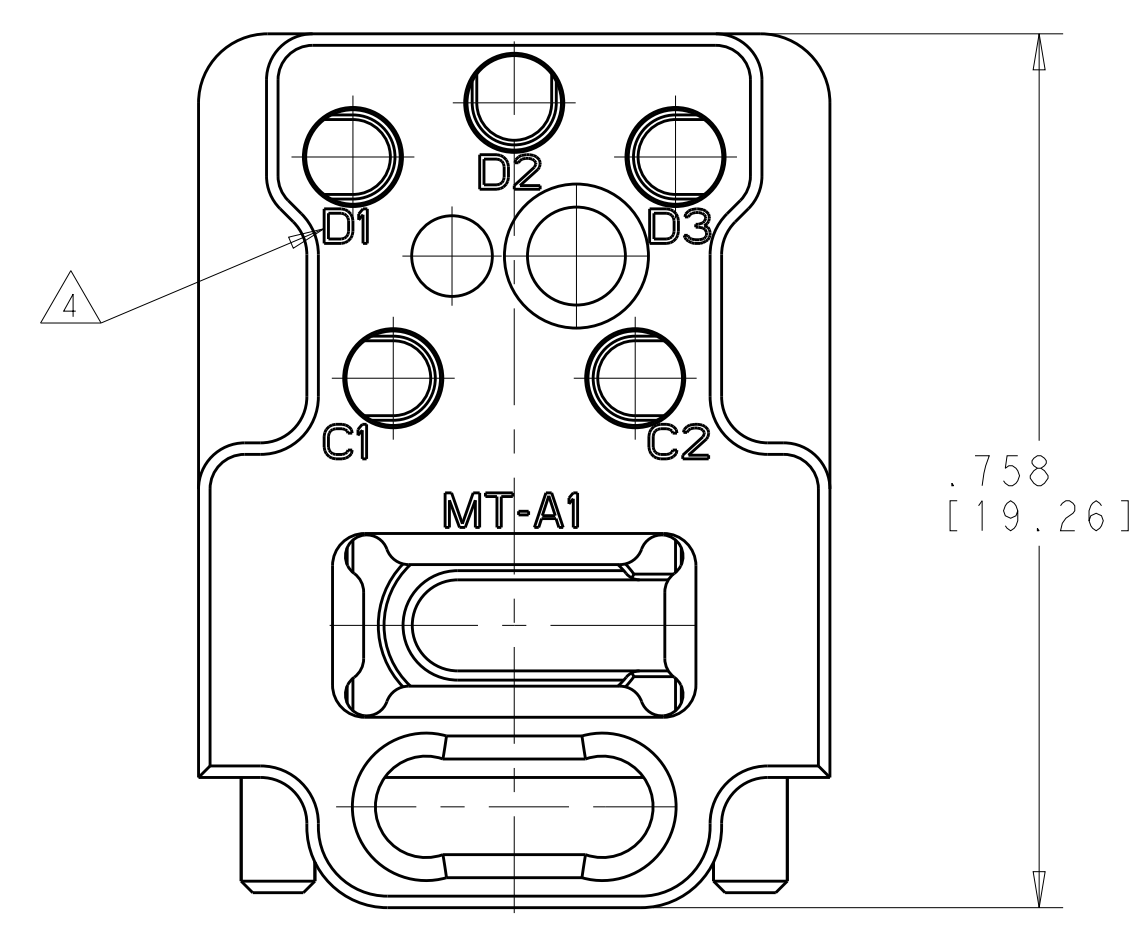
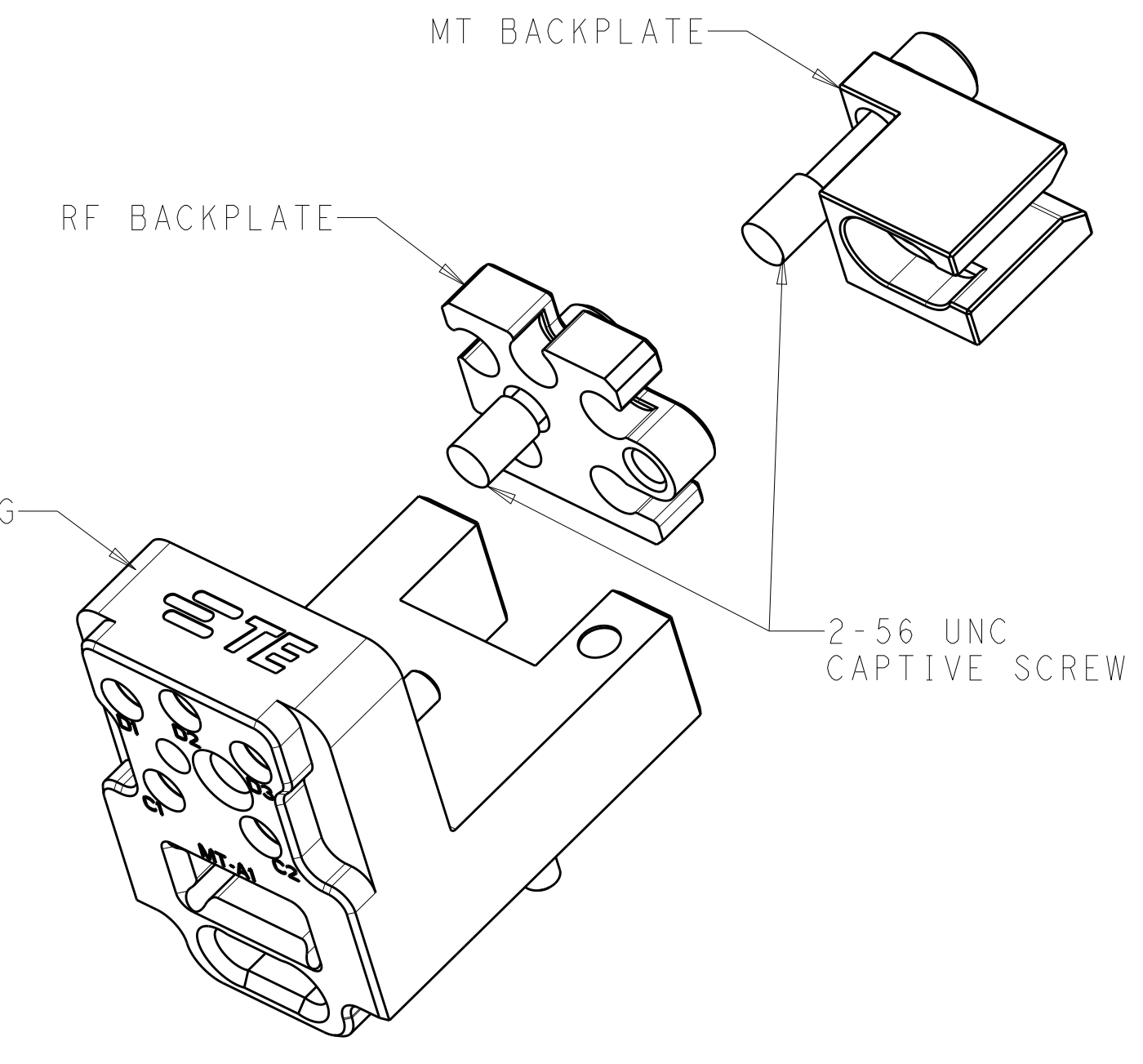
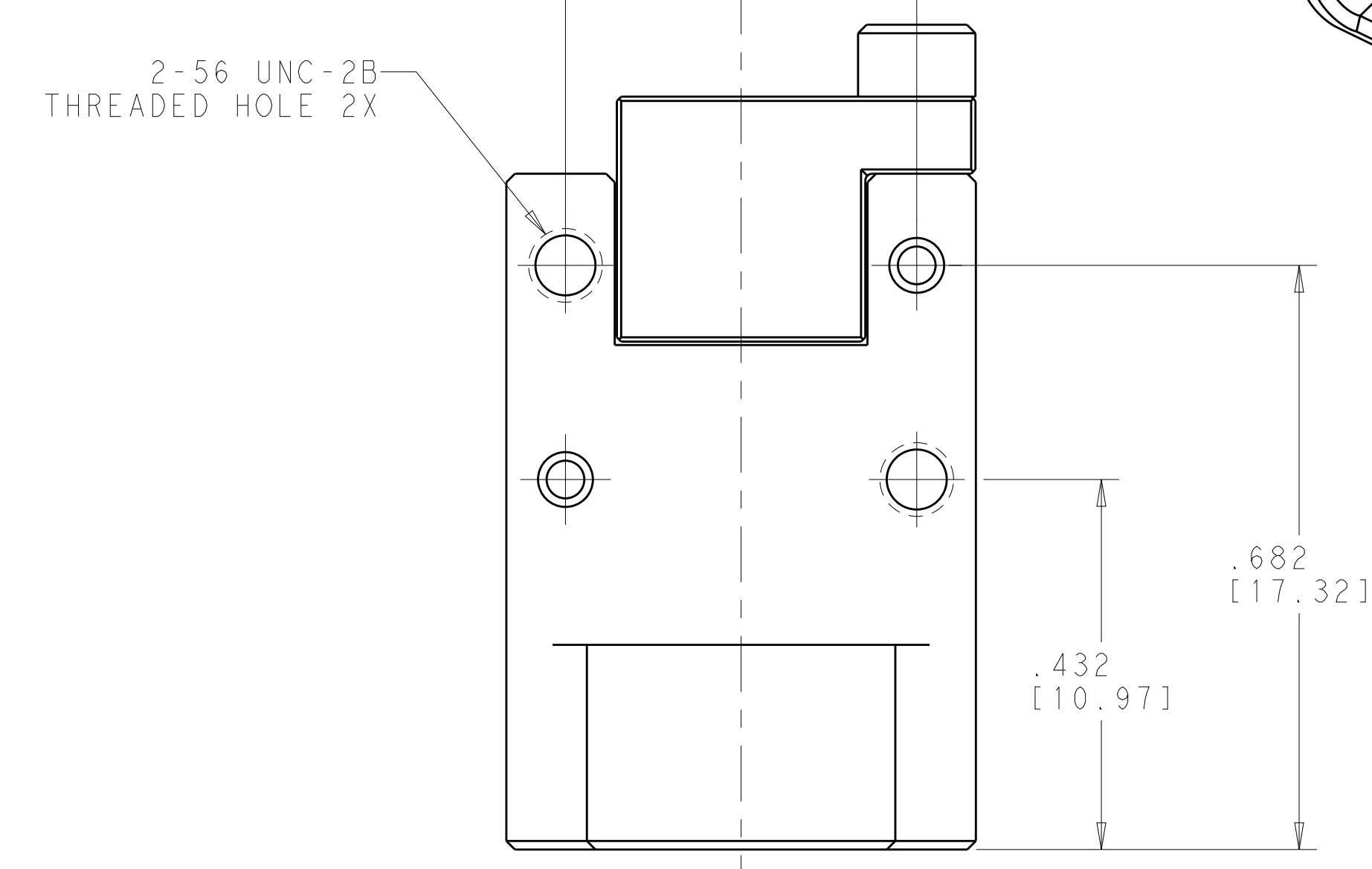
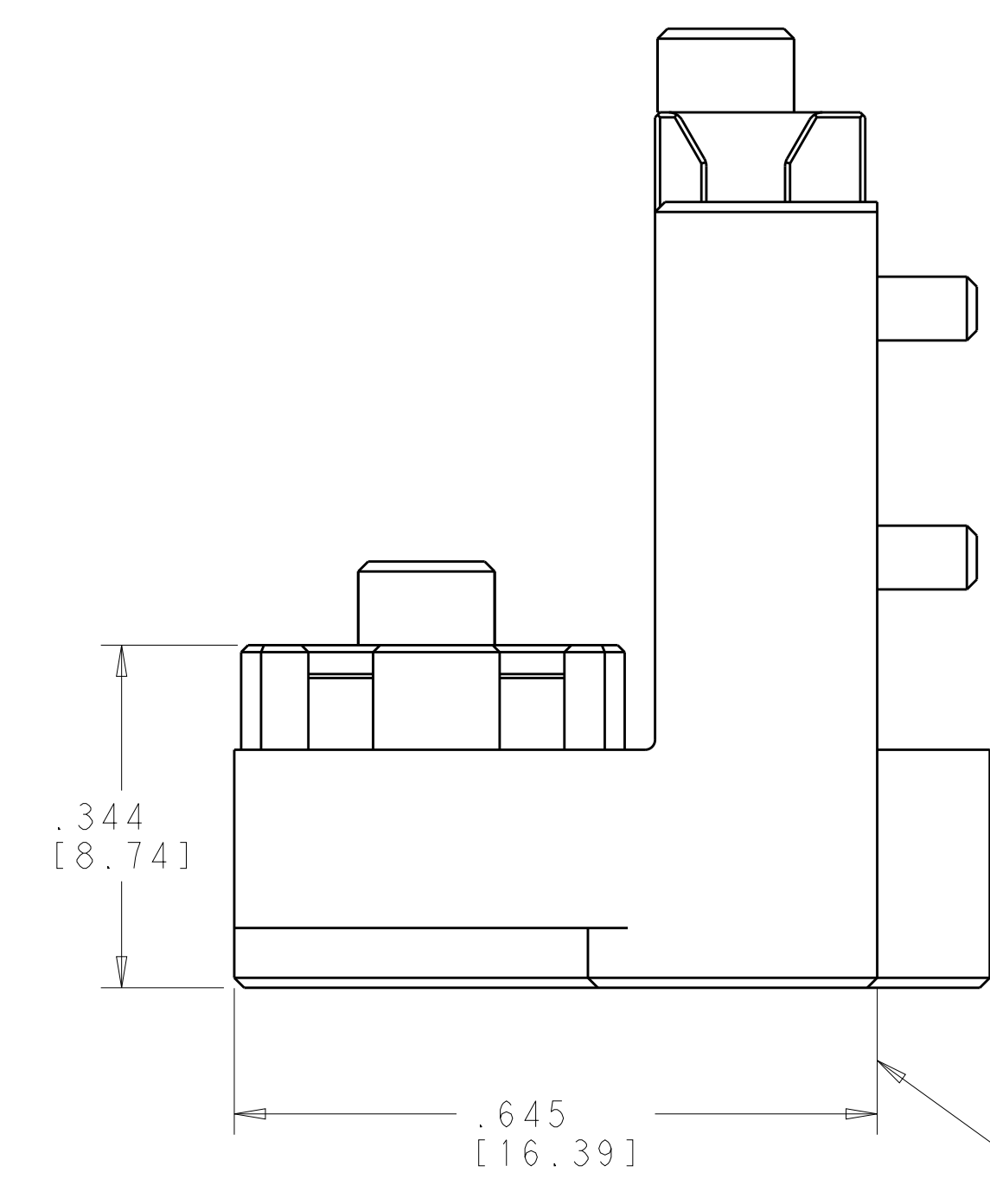
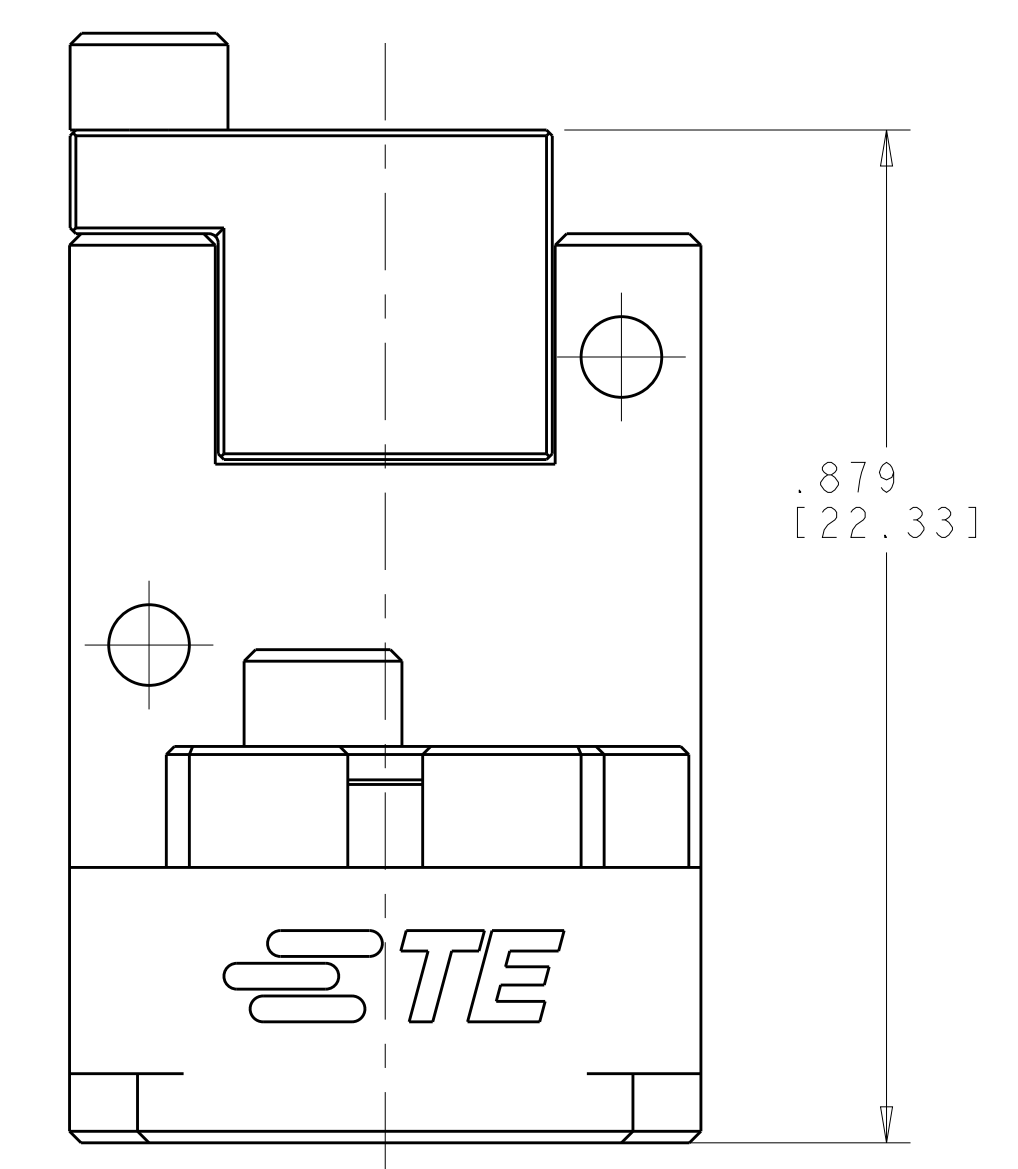
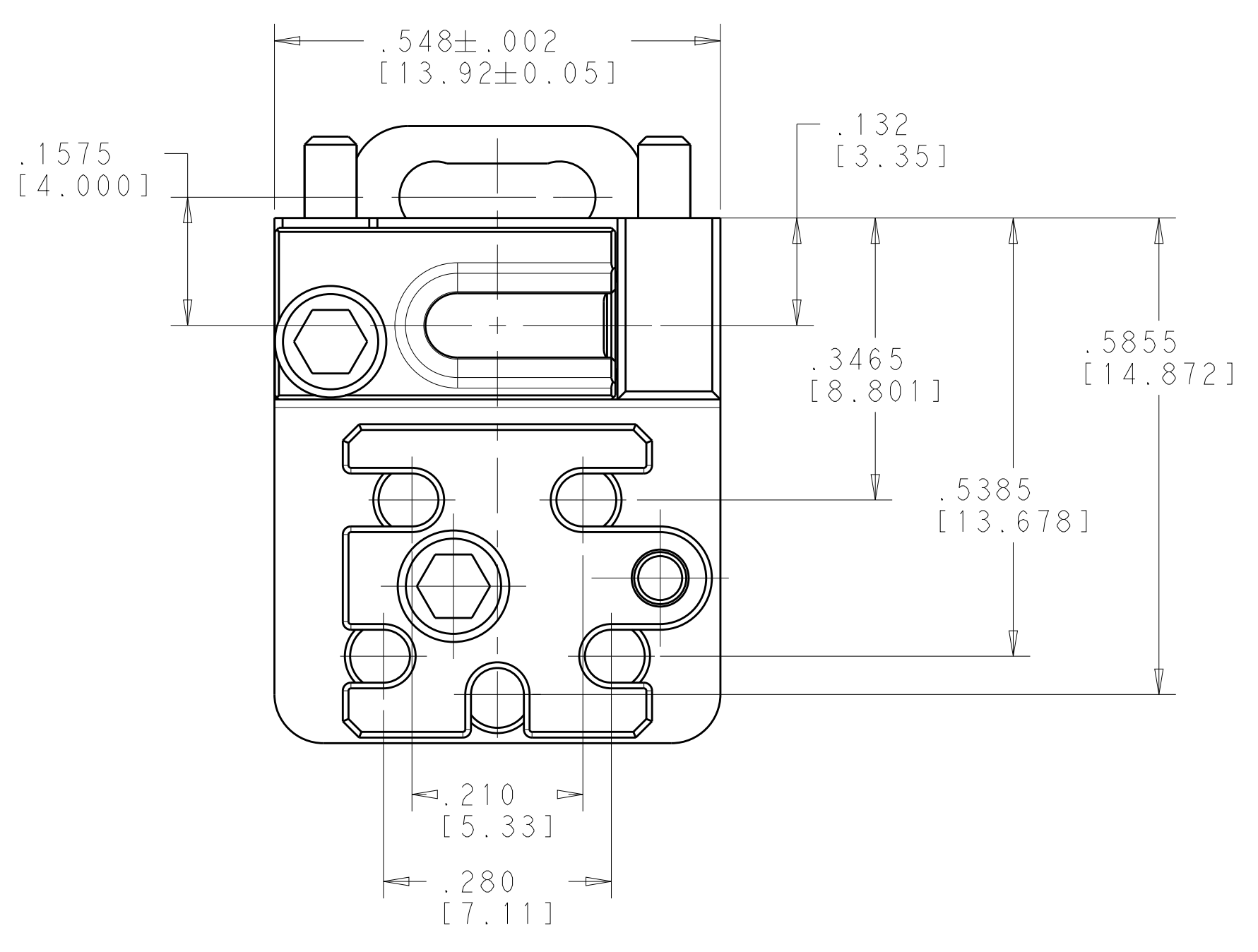


REVISIONS				
P.	LTM	DESCRIPTION	DATE	DWN APVD
A		RELEASED PER ECO-20-017928	15DEC2020	KM CG

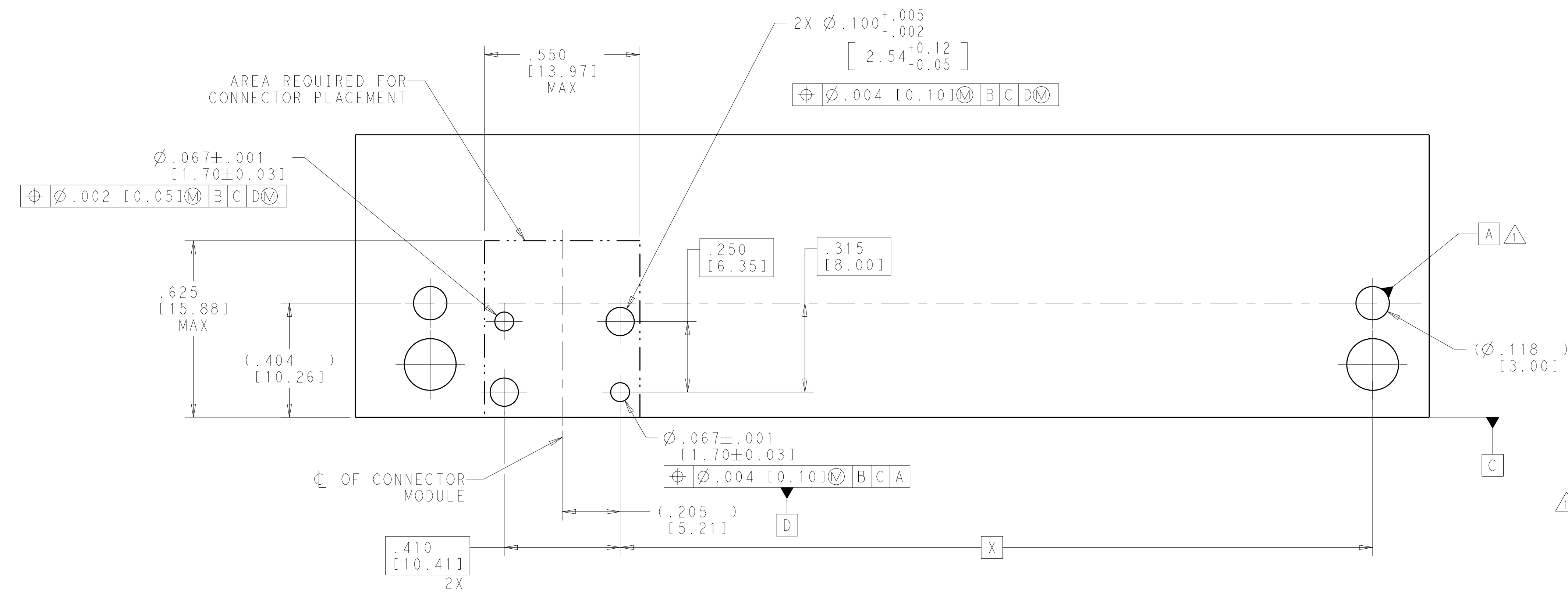


- △ MATERIAL:
MODULE HOUSING AND BACKPLATES - ALUMINUM ALLOY
SCREW - 300 SERIES STAINLESS STEEL
- △ FINISH:
MODULE HOUSING AND BACKPLATES - CLEAR CHROMATE CONVERSION COATING
SCREW - PASSIVATED
- 3. SHIPPED IN KIT FORM. BACKPLATE SCREWS TO BE ASSEMBLED TO BACKPLATES.
- △ CIRCUIT IDENTIFICATION MARKING
- 5. DESIGNED TO BE USED WITH NanoRF CONTACTS 2302339-1 AND MT FERRULE KIT 2355002-1 (12 FIBER) OR 2355002-2 (24 FIBER).
- △ PRODUCT SPEC:
NanoRF: 108-163006
MT FIBER OPTIC: 108-163029
- △ APPLICATION SPEC:
NanoRF: 408-163016
MT FIBER OPTIC: 114-163023

2359407-1
PART NUMBER

THIS DRAWING IS A CONTROLLED DOCUMENT.		DWN R. MILLER 08JUL2019	NAME STE TE Connectivity	
DIMENSIONS: [INCHES][mm]		CHK C. GINGRICH 12AUG2019	PRODUCT SPEC NanoRF MODULE, DAUGHTERCARD, F/O CABLED VERSION PLUS 5 POSITION .047 CABLE, VITA	
TOLERANCES UNLESS OTHERWISE SPECIFIED: 0 PLC ±. 1 PLC ±. 2 PLC ±. 3 PLC ±.005[0.13] 4 PLC ±. ANGLES ±.		APVD	APPLICATION SPEC	RESTRICTED TO
MATERIAL		WEIGHT	SIZE A1	CAGE CODE 00779
FINISH		CUSTOMER DRAWING	SCALE 6:1	SHEET 1 OF 2

REVISIONS				
P.	LTN	DESCRIPTION	DATE	APVD
-	-	SEE SHEET 1	-	-



△ DATUM [A] REFERENCE PER ANSI/VITA 46.0-2019, APPENDIX B.

RECOMMENDED PCB LAYOUT

THIS DRAWING IS A CONTROLLED DOCUMENT.		DWN K. MILLER CHK C. GINGRICH	08JUL2019 12AUG2019	TE Connectivity	
DIMENSIONS: [INCHES(mm)]		TOLERANCES UNLESS OTHERWISE SPECIFIED: 0 PLC ± 1 PLC ± 2 PLC ± 3 PLC ±.005(0.13) 4 PLC ± ANGLES ±			
MATERIAL		FINISH		PRODUCT SPEC	RESTRICTED TO
CUSTOMER DRAWING		WEIGHT		APPLICATION SPEC	SIZE CAGE CODE DRAWING NO
SCALE 6:1		SHEET 2 OF 2		REV A	REV A