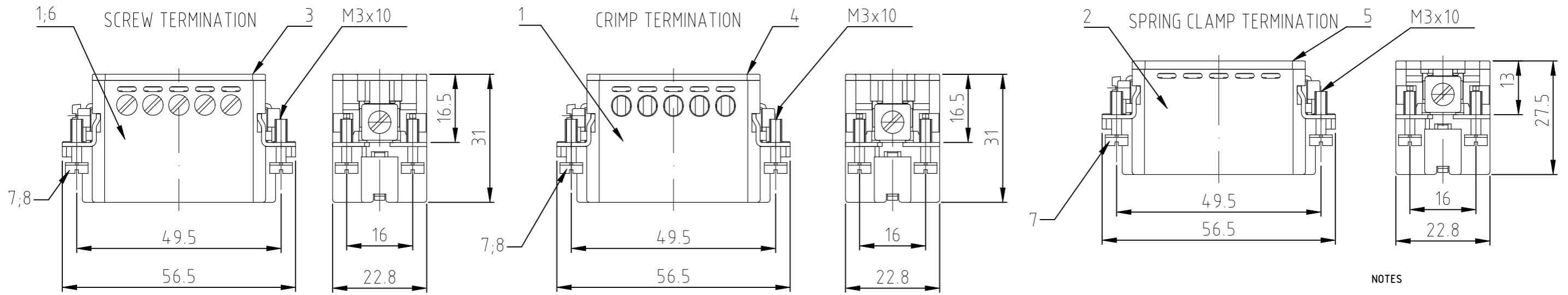


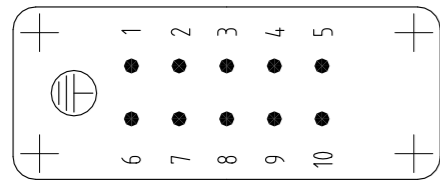
P	LTR	DESCRIPTION BESCHREIBUNG	DATE	DWN	APVD
	D5	ECR-21-123577	08JUL2022	RK	JB



NOTES

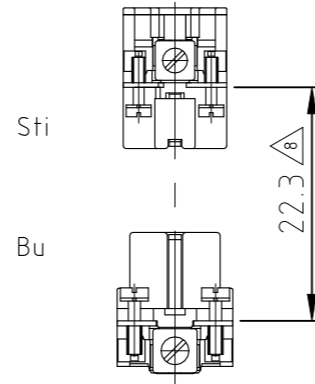
- SUITABLE CRIMP CONTACTS: SERIES HE/HA
OUTER DIMENSIONS OF INSULATION: MAX. Ø3,2 MM
- SUITABLE HOOD SIZE 2: SERIES HA; HD
SUITABLE INSERTION AND EXTRACTION TOOL:
SCREWDRIVER 0,5x3 DIN 5264
- Strip lenght: Screw conection 10mm
Spring clamp conection 10mm Crimp conection 7.5mm
- STANDARDS:
DIN EN 61984; DIN EN 60664-1
- PACKAGING
10 SETS IN A CARTON, PRE-MOUNTED
- SPECIAL PACKAGING
200 PIECES IN A KANN-BAN BOT
- SPECIAL PACKAGING
100 PIECES IN A KANN-BAN BOT

Contact arrangement / view from termination side

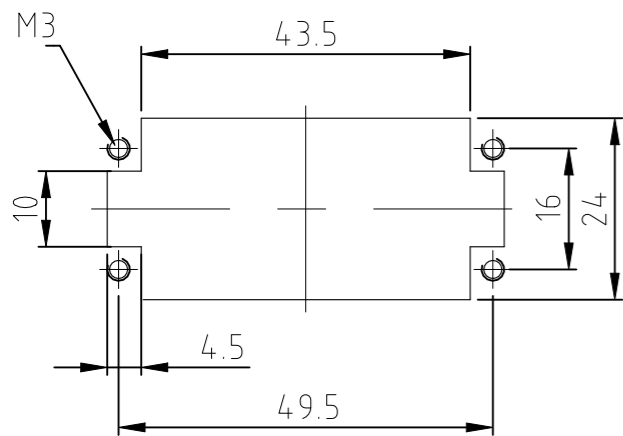


Assembling instruction

distance for safety contact marking max. 24 mm



Panel cut-out for contact insert when used without housing



HA.10.Sti.S.WIE	HA.10.Sti.C-OBS	HA.10.Sti.S.KM	HA.10.Sti.S-OBS	HA.10.Sti.S-VA	HA.10.Sti.S-AU	HA.10.Sti.C-VA	HA.10.Sti.LC	HA.10.Sti.C	HA.10.Sti.S
4	4		4	4	4	4	4	4	4
				1			1		
								1	
	1								1
1		1	1	1					1
								1	
1	1	1	1	1	1	1	1	1	1
1-2	1-0	0-9	0-8	0-4	0-6	0-5	7-1	2-3	1-1

DESCRIPTION / BENENNUNG	MATERIAL	Oberfläche	COLOR / FARBE	ITEM NO. POS.	REMARKS / BEMERKUNGEN
fixing screw	stainl.steel	blank		8	M3x10
fixing screw	steel	nickel plated	blue	7	M3x10
pin insert screw		PBT	hellbeige	6	with AU-contacts
cover spring strain clip		PBT	hellbeige	5	
cover crimp		PBT	helbeige	4	
cover screw		PBT	hellbeige	3	
pin insert spring strain clip		PBT	helbeige	2	
pin insert screw		PBT	helbeige	1	

<p>THIS DRAWING IS A CONTROLLED DOCUMENT.</p> <p>DIESE ZEICHNUNG IST EIN KONTROLLIERTES DOKUMENT.</p> <p>DIMENSIONS: MASSE/NHEITEN: mm</p> <p>TOLERANCES UNLESS OTHERWISE SPECIFIED: ALLGEMEINTOLERANZEN</p> <p>0 PLC ±</p> <p>1 PLC ±</p> <p>2 PLC ±</p> <p>3 PLC ±</p> <p>4 PKC ±</p> <p>ANGLES / WINKEL ±</p> <p>FINISH / OBERFLAECHE / FARBE</p>	<p>DWN 08.02.2000</p> <p>Schneider</p> <p>CHK 08.02.2000</p> <p>Schweiger</p> <p>APVD -</p> <p>NAME</p>	<p>STE TE Connectivity</p> <p>Pin insert</p> <p>Stifteinsatz HA.10.Sti</p>	<p>SIZE A3</p> <p>CAGE CODE 00779</p> <p>DRAWING NO ZEICHNUNGS-NR. C-1103414</p> <p>RESTRICTED TO NUR FUER</p>
	<p>PRODUCT SPEC PRODUKTSPEZ. 108-74007</p> <p>APPLICATION SPEC VERARBEITUNGSSPEZ. 114-74009</p> <p>WEIGHT GEWICHT -</p> <p>CUSTOMER DRAWING / KUNDENZEICHNUNG</p>		