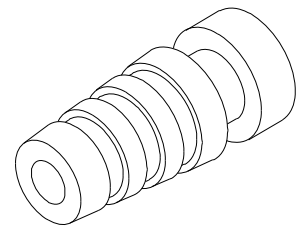
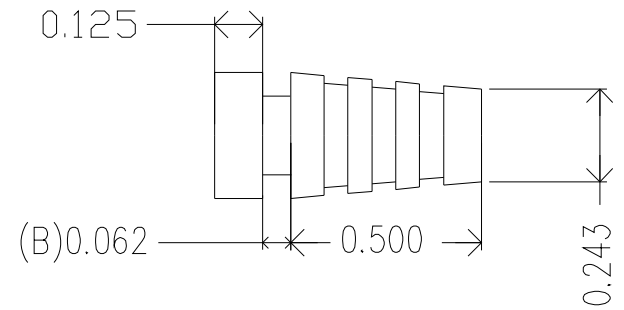
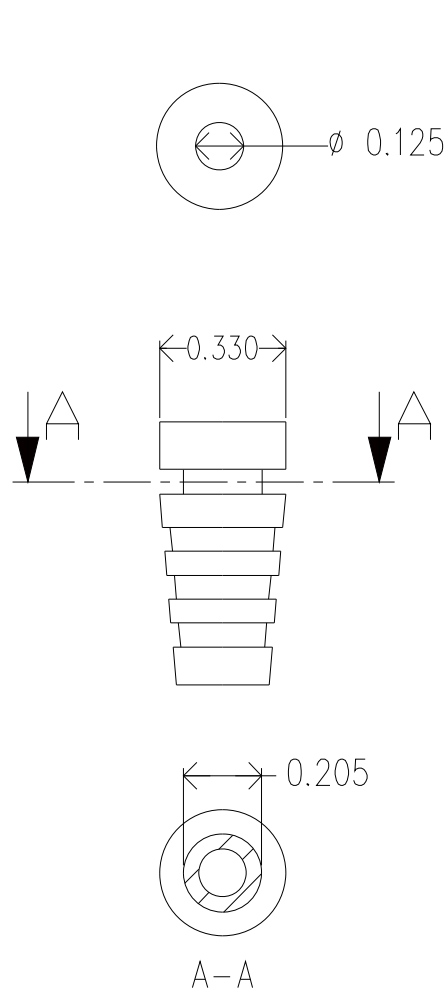


ZONE		REV.	REVISIONS	DESCRIPTION	DATE	APPROVED



MOLD MATERIAL: ISC P/N: 5000214, M1472, PVC, BLK, RoHS

ISC ENGINEERING
CONTROLLED COPY
 Rich Fierro 06/29/2016

Dimensions are subject to change.
 PROPRIETARY AND CONFIDENTIAL
 THE INFORMATION CONTAINED IN THIS DRAWING IS THE SOLE PROPERTY OF ISC ENGINEERING. ANY REPRODUCTION IN PART OR AS A WHOLE WITHOUT THE WRITTEN PERMISSION OF ISC ENGINEERING IS PROHIBITED.

DIMENSIONS ARE IN INCHES		NAME	DATE	ISC Engineering 4351 Schaefer Ave, Chino, CA 91710 Ph: 909-596-3315 Fax: 909-596-3335 www.iscengineering.com www.overmoldtooling.com	
TOLERANCES:		DRAWN	R FIERRO		03/22/04
FRACTIONAL ±		CHECKED			
ANGULAR: MACH ±		ENG APPR.			
BEND ±		MFG APPR.			
TWO PLACE DECIMAL ±		Q.A.			
THREE PLACE DECIMAL ±		COMMENTS:			
MATERIAL --		Round, Solidrib			
FINISH --		1461040-125-B(.062)-205-330-0			
NEXT ASSY	USED ON	SIZE DWG. NO.		REV.	
		A 1460049			
APPLICATION	DO NOT SCALE DRAWING	SCALE: 2:1	WEIGHT:	SHEET 1 OF 1	