

- 1
- 2
- 3
- 4
- 5
- 6
- 7
- 8
- 9
- 10
- 11
- 12
- 13
- 14
- 15
- 16
- 17
- 18

PROFILE

Anodised aluminium, natural colour, matte finish.

PINS SUPPORT

Acetal resin based (POM) technopolymer, white colour.

PINS

AISI 304 stainless steel.

ROLLERS

Polyethylene based (PE) technopolymer, grey colour.

STANDARD EXECUTIONS

- **GLA-1-RS**: with shaped rollers, spherical contact.
- **GLA-1-RC**: with cylindrical rollers.
- **GLA-1-RT**: with shaped rollers, cylindrical contact.

FEATURES AND APPLICATIONS

GLA-1 side guides are self-supporting structures for the side guide of products with limited vertical dimensions on conveyor belts (Fig.1).

Depending on the product to transport, it is recommended to use:

- GLA-1-RS: for the guide of products in cans or in plastic containers;
- GLA-1-RC: for the guide of cardboard products, for a greater fluency;
- GLA-1-RT: for the guide of glass products, in case of accidental breakage they facilitate the expulsion of debris.

Supplied assembled in bars of 3 meters length.

SPECIAL EXECUTIONS ON REQUEST

- Side guides with rollers in different colours.
- Side guides with pins in acetal resin based (POM) technopolymer.

ACCESSORIES ON REQUEST

- BDG: zinc-plated steel connecting bar for guides.
- TGL: closing cap for guides.
- PGL-1: separation block for side guide.
- MPG-P: assembly pin.
- MPG-V: hammer head screw.

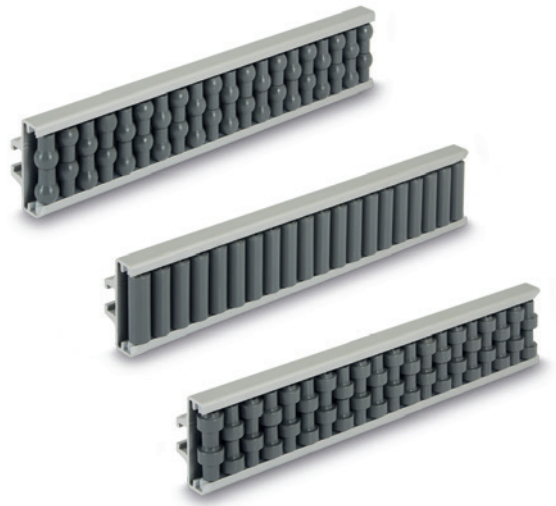
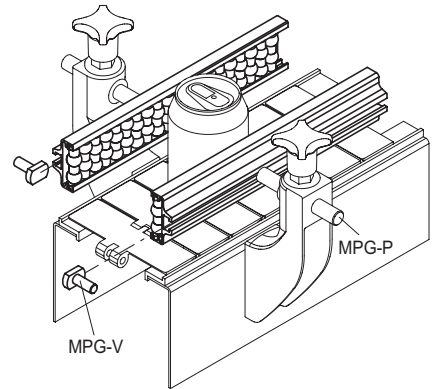


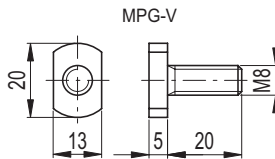
Fig.1



METRIC

MPG-V

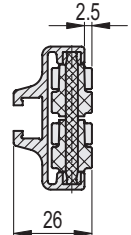
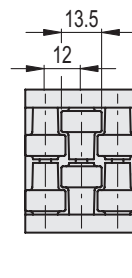
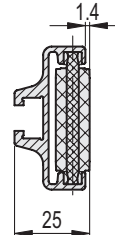
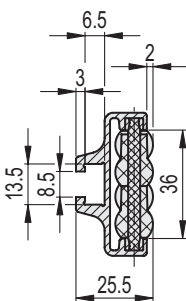
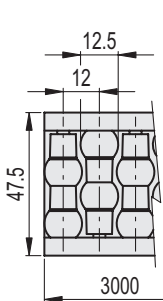
Code	Description	⚖️
419693	MPG-V-p-M8x20	15



GLA-1-RS

GLA-1-RC

GLA-1-RT



METRIC

GLA-1-RS

Code	Description	⚖️
419101	GLA-1-RS-48-3000	3400

INOX STAINLESS STEEL

GLA-1-RC

Code	Description	⚖️
419102	GLA-1-RC-48-3000	3400

METRIC

INOX STAINLESS STEEL

GLA-1-RT

Code	Description	⚖️
419103	GLA-1-RT-48-3000	3400

METRIC

INOX STAINLESS STEEL