

## TLC. Hook clamps

Steel or stainless steel

## TLG. Hook clamps

Steel or stainless steel

- 1
- 2
- 3
- 4
- 5
- 6
- 7
- 8
- 9
- 10
- 11
- 12
- 13
- 14
- 15
- 16
- 17
- 18



### STANDARD EXECUTIONS

- **TLC.Z:** zinc-plated steel.
- **TLC.SST:** AISI 304 stainless steel.

### SPECIAL EXECUTIONS ON REQUEST

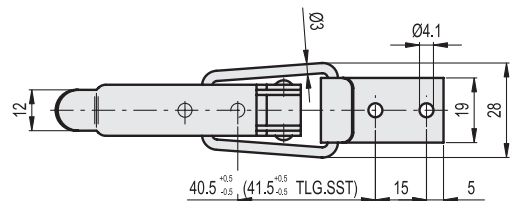
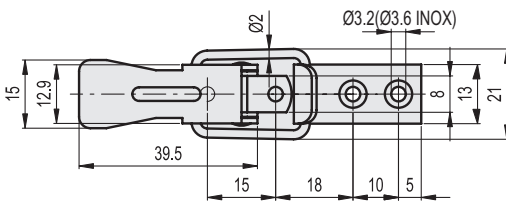
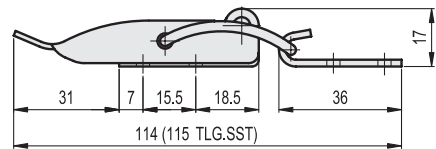
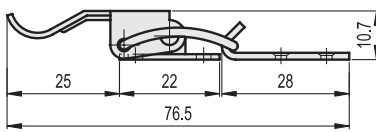
- Hook clamps in unplated steel or nickel-plated steel.
- Catch brackets in different shapes and finishes.

### STANDARD EXECUTIONS

- **TLG.Z:** zinc-plated steel.
- **TLG.SST:** AISI 304 stainless steel.

### SPECIAL EXECUTIONS ON REQUEST

- Hook clamps in unplated steel or nickel-plated steel.
- Catch brackets in different shapes and finishes.



### TLC.Z

METRIC

Code	Description	Max. working load [N]	Load at breakage [N]	⚖️
420071	TLC.Z-15/76.5+R	400	1000	16

### TLG.Z

METRIC

Code	Description	Max. working load [N]	Load at breakage [N]	⚖️
420111	TLG.Z-12/114+R	1000	2500	59

### TLC.SST

INOX STAINLESS STEEL METRIC

420072	TLC.SST-15/76.5+R	400	1500	16
--------	-------------------	-----	------	----

### TLG.SST

INOX STAINLESS STEEL METRIC

420112	TLG.SST-12/114+R	1000	2500	59
--------	------------------	------	------	----