



ANATECH ELECTRONICS INC
RF & Microwave Filters & Products

135 MHz LC Band Pass Filter

Part Number: AE135B5790



Electrical Specifications

Center Frequency: 135 MHz
Passband: 100-180 MHz
Insertion Loss: 3.0dB Max.
Return Loss: 14dB Min.
Rejection: ≥ 50 dB @ 0-90 MHz
Rejection2: ≥ 15 dB @ 270-350 MHz
Rejection3: ≥ 25 dB @ 410-490 MHz
Rejection4: ≥ 45 dB @ 550-630 MHz
Rejection5: ≥ 40 dB @ 1000-1360 MHz

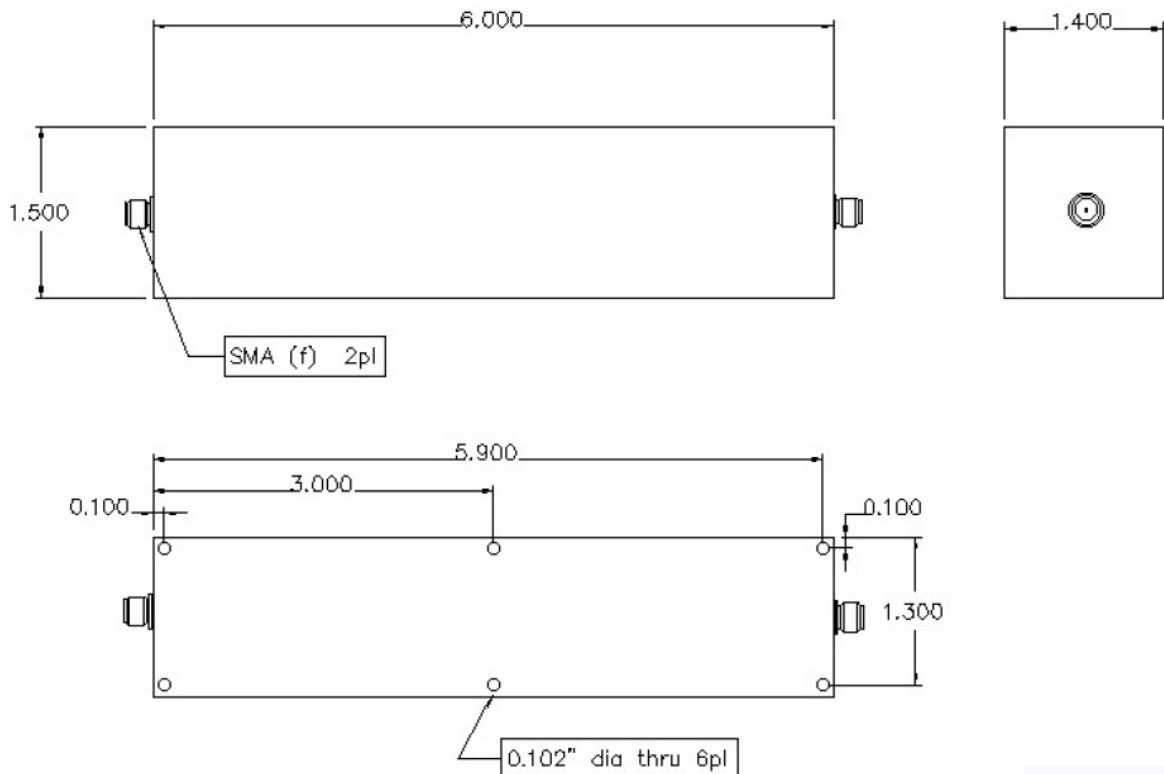
Mechanical

Mounting Method: Through Holes
Connector Type: SMA(F)
Dimensions: 6.0" X 1.5" x 1.4" .

Environmental

Operating Temperature: -25°C to +70°C
Storage Temperature: -40°C to +90°C
Shock: 10 G. 11ms
Vibration: 10 G. 5 to 200Hz

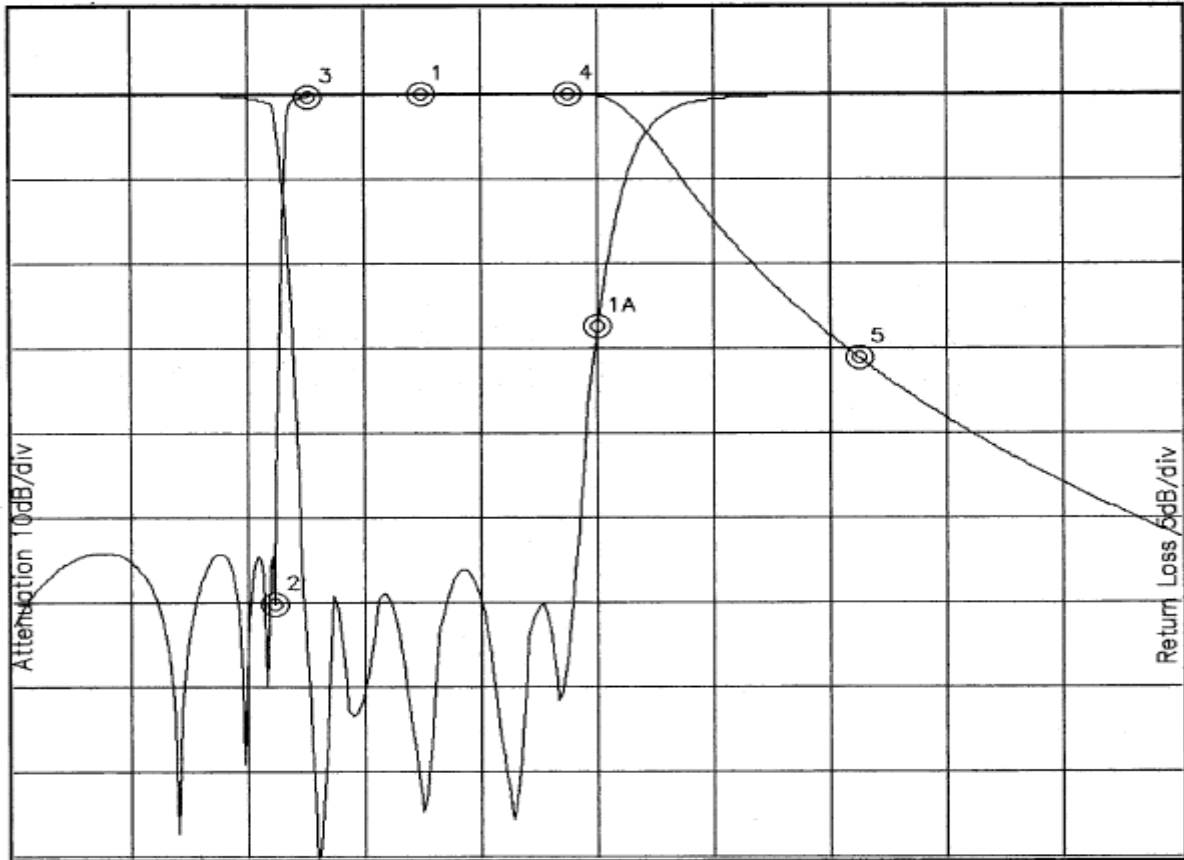
Outline Drawing:





Response Plot:

B5790B.lad APR 24, 2002 Attenuation/Return Loss



Attenuation Start: 10.0MHz Stop: 370.0MHz Return Loss Start: 10.0MHz Stop: 370.0MHz

Offset -0.2173dB

- | | |
|---|---|
| Marker 1 Freq 135.04MHz Atten -0.006dB | Marker 1A Freq 189.70MHz Ret Loss -13.834dB |
| Marker 2 Freq 89.677MHz Atten -60.703dB | |
| Marker 3 Freq 100.14MHz Atten -0.345dB | |
| Marker 4 Freq 180.40MHz Atten -0.028dB | |
| Marker 5 Freq 270.54MHz Atten -31.399dB | |