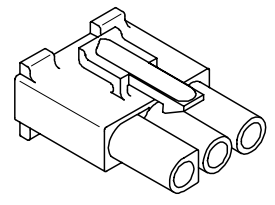
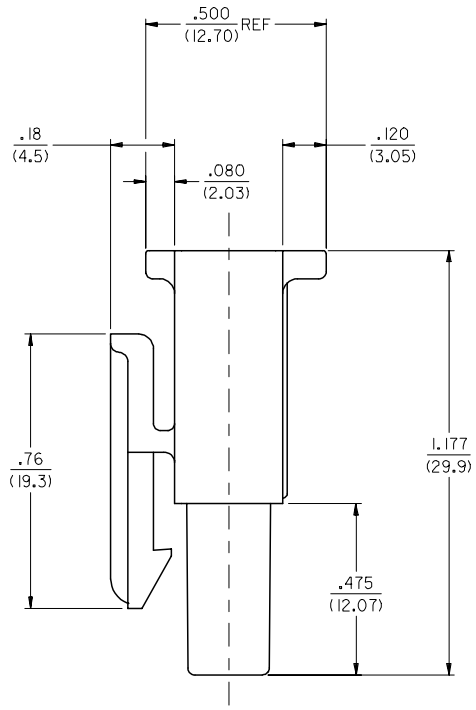
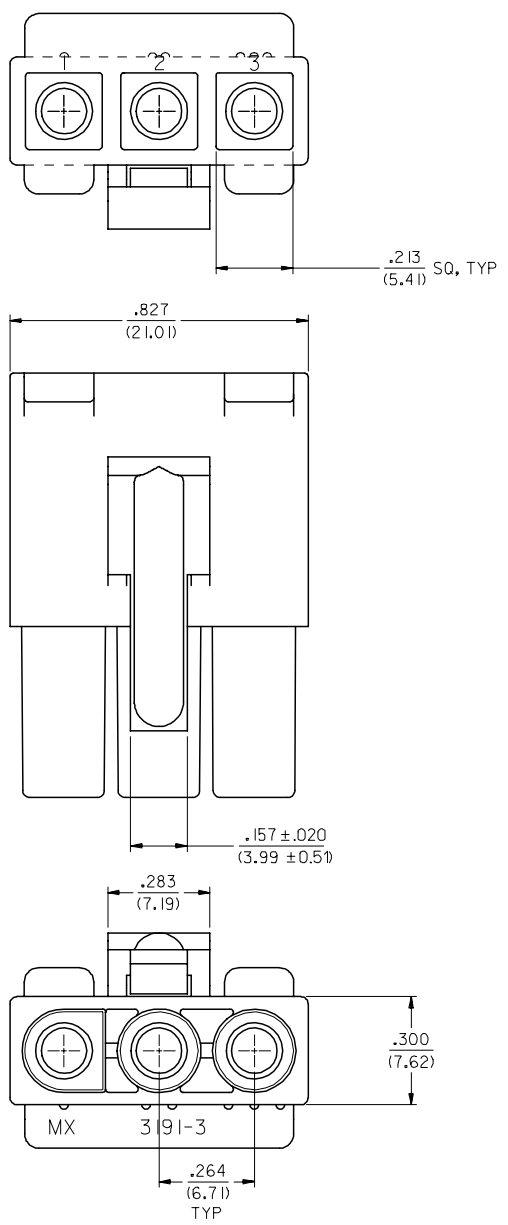


13 12 11 10 9 8 7 6 5 4 3 2 1

J  
I  
H  
G  
F  
E  
D  
C  
B  
A

J  
I  
H  
G  
F  
E  
D  
C  
B  
A



RECEPTACLE

INITIAL RELEASE FC NO: UCP2008-0136 DRW:LSCHM1DT 2007/07/25 CHKD:LSCHM1DT 2007/07/27 APPR:FSM1TH 2007/07/27 REVISIONS A	QUALITY SYMBOLS ▽=0 ▽=0	GENERAL TOLERANCES (UNLESS SPECIFIED)		DIMENSION STYLE IN/MM	SCALE 4:1	DESIGN UNITS INCH	THIRD ANGLE PROJECTION
		4 PLACES ± .010 ± .010 3 PLACES ± .010 ± .010 2 PLACES ± 0.25 ± .015 1 PLACE ± 0.38 ± .015	DRAWN BY AELHAG	DATE 2007/06/27	TITLE .093/(2.36) HOUSINGS, PLUG AND RECEPTACLE, 3 CKT .264/(6.71) CTRS.		
		ANGULAR ±1/2°	CHECKED BY LSCHM1DT	DATE 2007/07/19	APPROVED BY FSM1THROEMER	DATE 2007/07/20	
		DRAFT WHERE APPLICABLE MUST REMAIN WITHIN DIMENSIONS	MATERIAL NO. SEE CHART	MOLEX INCORPORATED	DOCUMENT NO. SD-3191-3**1	SHEET NO. 2 OF 3	

12 11 10 9 8 7 6 5 4 3 2 1

13 12 11 10 9 8 7 6 5 4 3 2 1

PLUG			RECEPTACLE		
PART NO.	ENG. NO.		PART NO.	ENG. NO.	
50-36-1722	3191-3P1-1		50-36-1689	3191-3R1-1	

**LEGEND**

3191-3\*\*\*\*-\*

CIRCUIT SIZE

P = PLUG

R = RECEPTACLE

EARS: BLANK = WITH PREBENT EARS (PLUG ONLY)

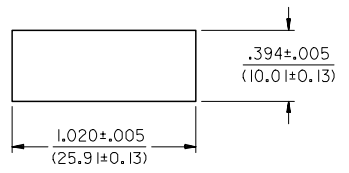
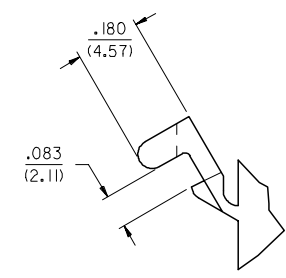
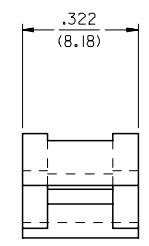
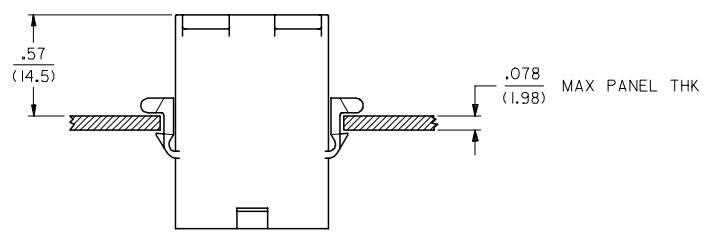
I = WITHOUT EARS

COLOR: NOT APPLICABLE

MATERIAL:  
1: CODE B.

**NOTES:**

1. MATERIAL: B = NYLON (PA 6), UL94 V-0, IEC 60335-1, 4TH EDITION GLOW WIRE CAPABLE; COLOR: BLACK
2. FINISH: NONE
3. PRODUCT SPECIFICATION: PS-02-08
4. PACKAGING SPECIFICATION: PK-3191-001
5. PARTS CONFORM TO CLASS B REQUIREMENTS OF COSMETIC SPECIFICATION PS-45499-002 EXCEPT SINK AND DISCOLORATION MEETS CLASS 'C' REQUIREMENTS.



RECOMMENDED HOLE CUTOUT

**DETAIL "A"**  
PREBENT MOUNTING EAR  
(SCALE 4:1)

J  
I  
H  
G  
F  
E  
D  
C  
B  
A

INITIAL RELEASE EC NO: UCP2008-0136 DRWNL: SCHMIDT 2007/07/25 CHKD: SCHMIDT 2007/07/27 APPR: FSM TH 2007/07/27 REVISION DESCRIPTION A REV	QUALITY SYMBOLS ▽=0 ▽=0	GENERAL TOLERANCES (UNLESS SPECIFIED) <table border="1"> <thead> <tr> <th></th> <th>mm</th> <th>INCH</th> </tr> </thead> <tbody> <tr> <td>4 PLACES</td> <td>± .010</td> <td>± .0004</td> </tr> <tr> <td>3 PLACES</td> <td>± .015</td> <td>± .0006</td> </tr> <tr> <td>2 PLACES</td> <td>± 0.25</td> <td>± .010</td> </tr> <tr> <td>1 PLACE</td> <td>± 0.38</td> <td>± .015</td> </tr> </tbody> </table> ANGULAR ±1/2°		mm	INCH	4 PLACES	± .010	± .0004	3 PLACES	± .015	± .0006	2 PLACES	± 0.25	± .010	1 PLACE	± 0.38	± .015	DIMENSION STYLE IN/MM DRAWN BY DATE AELHAG 2007/06/27 CHECKED BY DATE SCHMIDT 2007/07/19 APPROVED BY DATE FSMITHROEMER 2007/07/20 MATERIAL NO.	SCALE --- DESIGN UNITS INCH THIRD ANGLE PROJECTION	TITLE .093/(2.36) HOUSINGS, PLUG AND RECEPTACLE, 3 CKT .264/(6.71) CTRS. MOLEX INCORPORATED DOCUMENT NO. SD-3191-3**1 SHEET NO. 3 OF 3
		mm	INCH																	
	4 PLACES	± .010	± .0004																	
	3 PLACES	± .015	± .0006																	
2 PLACES	± 0.25	± .010																		
1 PLACE	± 0.38	± .015																		
DRAFT WHERE APPLICABLE MUST REMAIN WITHIN DIMENSIONS		SEE CHART	THIS DRAWING CONTAINS INFORMATION THAT IS PROPRIETARY TO MOLEX INCORPORATED AND SHOULD NOT BE USED WITHOUT WRITTEN PERMISSION																	

12 11 10 9 8 7 6 5 4 3 2 1