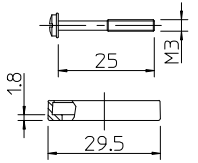
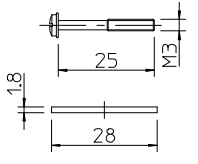


10 9 8 7 6 5 4 3 2 1

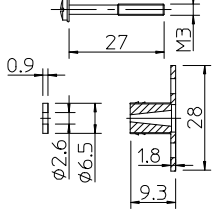
Screw M3x25
and Profile Gasket
Qty 2
(See sheet 2)



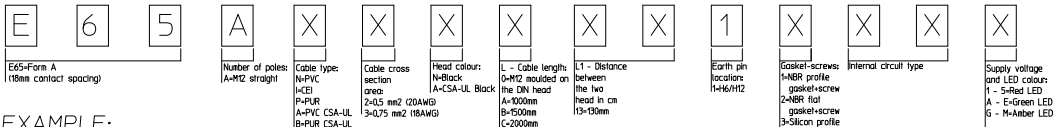
Screw M3x25
and Flat Gasket
Qty 2
(See sheet 2)



Screw M3x27
with Grommet
& Integrated Gasket
Qty 2
(See sheet 2)



PART NUMBER MATRIX



EXAMPLE:
E65AP2NA2011C4H

CIRCUIT TAMPO PRINTOUT/WHITE
(Not for E65AXXXXXX1X000)

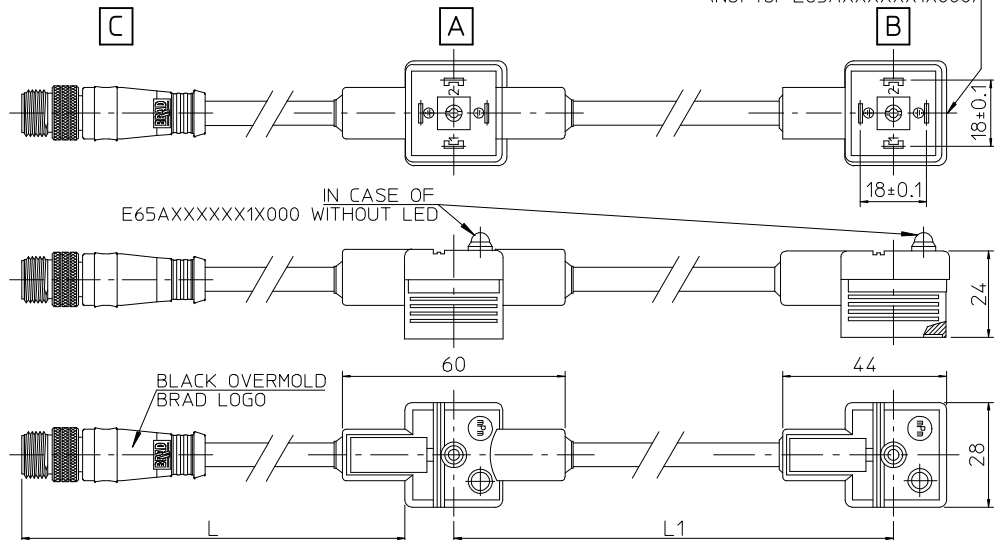


Table of length tolerances [mm]

Over	Up to and including	Tolerance
0	1000	±20
1000	3000	±30
3000	5000	±40
5000	10000	±50
10000	15000	±100
15000	20000	±150
20000		±L/100

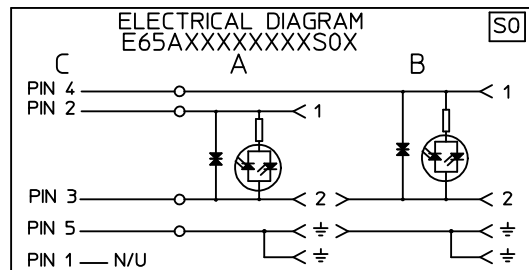
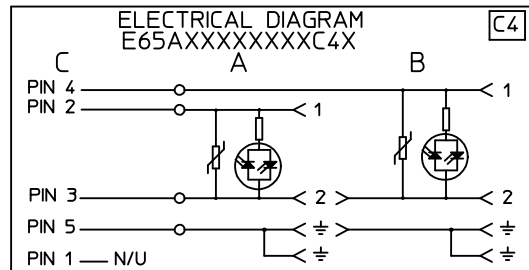
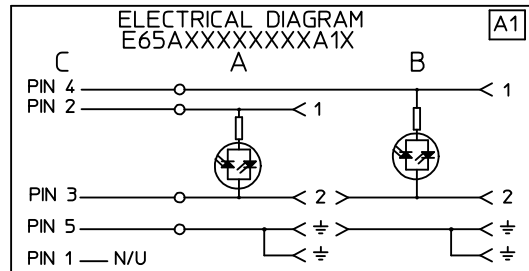
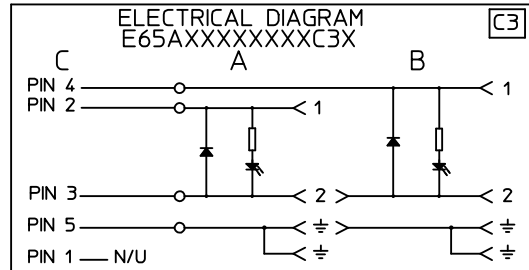
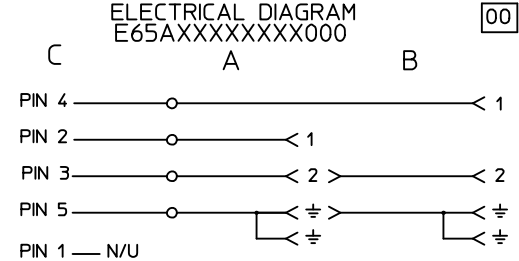


Table 1 - PNs list

Molex PN	Engineering No.	L [mm]	L1 [mm]
1210550072	E65AI2NY1411C4H	500	140
1210550130	E65AP2NA2011C4H	1000	200
1210550131	E65AP2NB2011C4H	1500	200
1210550138	E65AP2NC2011C4H	2000	200
1210550158	E65AP2NA201PC4H	1000	200
1210550170	E65AP2NA131PC32	1000	130
1210550178	E65AP2NA3011C4L	1000	300
1210550208	E65AP2NA1311C4B	1000	130
1210550250	E65AP2NA1322C4B	1000	130
1210550260	E65AP3NB201PSOH	1500	200
1210550264	E65AP2NA1312C4B	1000	130
1210550305	E65AP2NC201KSOH	2000	200
1210550319	E65AI3NB1411C4H	1500	140
1210550320	E65AI3NE1411C4H	3000	140

ORIGINAL RELEASE
EC NO: IPG2016-0461
DRWN: JMARSZALEK 2013/10/30
CHKD:
APPR: MIWASIECZKO 2015/09/28

QUALITY SYMBOLS
▽=0
◁=0

DESCRIPTION
REV

GENERAL TOLERANCES (UNLESS SPECIFIED)

	mm	INCH
4 PLACES	± ---	± ---
3 PLACES	± ---	± ---
2 PLACES	± ---	± ---
1 PLACE	± ---	± ---
0 PLACE	± ---	± ---

ANGULAR ±---°
DRAFT WHERE APPLICABLE
MUST REMAIN WITHIN DIMENSIONS

DIMENSION STYLE
MM ONLY

DRAWN BY: JMARSZALEK
DATE: 2013/10/30

CHECKED BY: _____
DATE: _____

APPROVED BY: MIWASIECZKO
DATE: 2015/09/28

MATERIAL NO.
SEE TABLE 1

SIZE: A3

SCALE: -
DESIGN UNITS: METRIC
THIRD ANGLE PROJECTION

TITLE: E65AXXXXXX1XXXX
DUAL DIN FORM A WITH M12

molex

DOCUMENT NO.: SD-121055-007
SHEET NO.: 1 OF 1

THIS DRAWING CONTAINS INFORMATION THAT IS PROPRIETARY TO MOLEX INCORPORATED AND SHOULD NOT BE USED WITHOUT WRITTEN PERMISSION

9 8 7 6 5 4 3 2 1