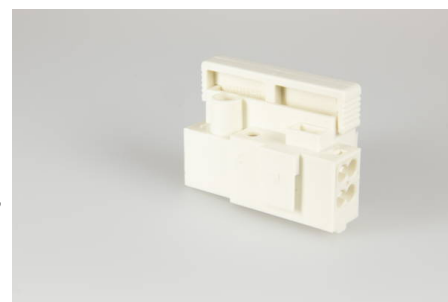




## Fused Terminal Blocks

### 900 SI/ 1

screw-screwless-terminal block with fuse holder 6,3x25/6,3x32, 1 pole,  
fixing: screw, voltage rating: 400 V, current rating: 6.3 A



### Order Info

<b>reference number (ref.no.)</b>	175001
<b>PU</b>	100
<b>EAN</b>	4028012108077

### Type

<b>type</b>	screw-screwless-terminal block with fuse holder 6,3x25/6,3x32
<b>number of poles</b>	1 pole
<b>clamping units per pole</b>	4
<b>colour</b>	white
<b>connection type</b>	screw-screwless

### Technical Data

<b>voltage rating</b>	400 V
<b>current rating</b>	6.3 A
<b>insulating material</b>	PA
<b>contact material</b>	brass
<b>flammability rating</b>	V-2
<b>max. ambient temperature operation</b>	70 °C
<b>assembly contact screw</b>	0,8x4,0 / $\cup$ 0,5 Nm
<b>internal core cross-section min.</b>	0.5 mm <sup>2</sup>
<b>internal core cross-section max.</b>	1.5 mm <sup>2</sup>
<b>external core cross-section min.</b>	0.5 mm <sup>2</sup>
<b>external core cross-section max.</b>	4.0 mm <sup>2</sup>
<b>internal stripping length</b>	7.0-7.5 mm
<b>external stripping length</b>	8.0-8.5 mm
<b>fixing</b>	screw
<b>type of conductor solid external</b>	yes
<b>type of conductor flexibel external</b>	yes
<b>type of conductor solid internal</b>	yes
<b>type of conductor stranded internal</b>	yes

## Accessories

---

**ZEL 110**

196420

---