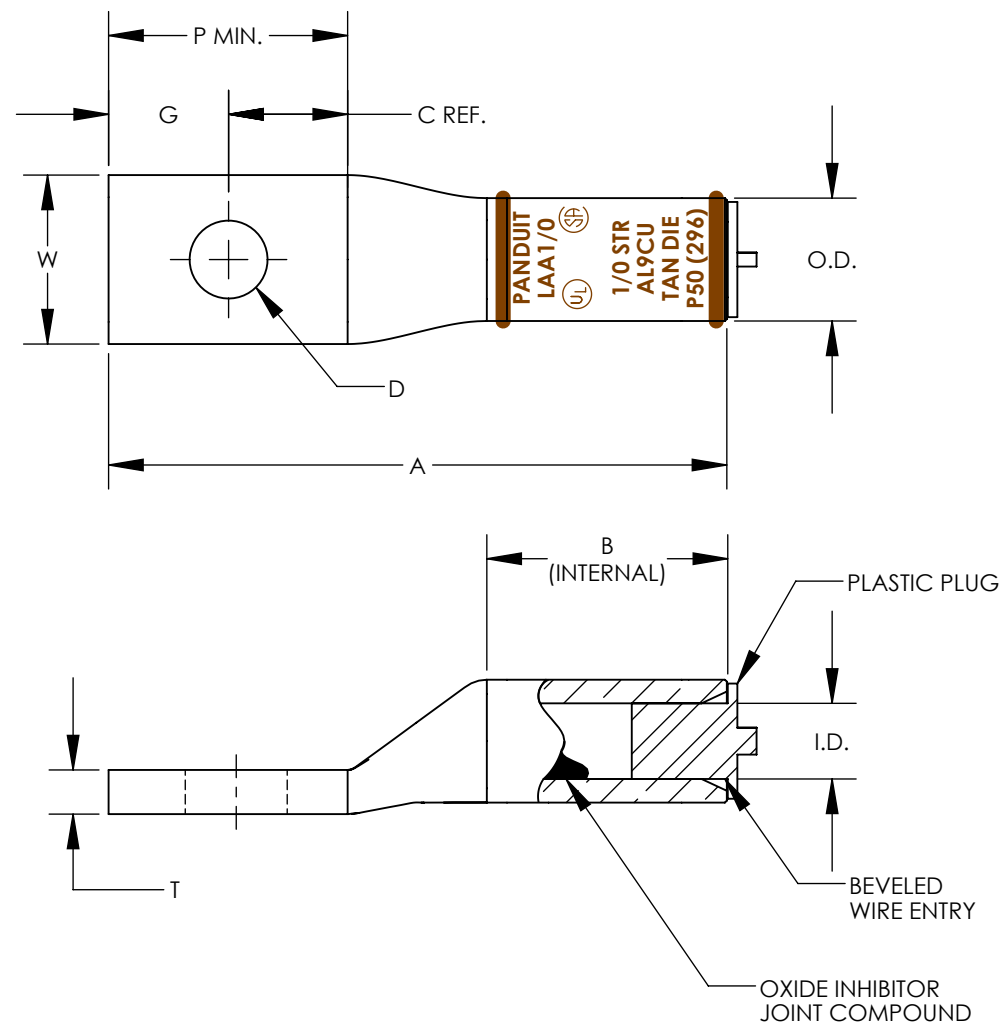


THIS COPY IS PROVIDED ON A RESTRICTED BASIS AND IS NOT TO BE USED IN ANY WAY DETRIMENTAL TO THE INTERESTS OF PANDUIT CORP.

PANDUIT PART NUMBER	PACKAGE QUANTITY	CONDUCTOR SIZE	STUD SIZE	OVERALL LENGTH "A" ±.12	BARREL LENGTH "B" MIN.	I.D. ±.01	O.D. ±.01	TONGUE WIDTH "W" ± .06	TONGUE THICKNESS "T" ±.02	TONGUE LENGTH "P" MIN.	HOLE OFFSET "G" ± .03	STUD HOLE DIA "D" ±.02	WRENCH CLEARANCE "C" REF	WIRE STRIP LENGTH	PANDUIT DIE COLOR CODE PANDUIT DIE INDEX NUMBER (BURNDY DIE INDEX NUMBER)
LAA6-14-T	200	#6 AWG	1/4"	2.22	0.81	0.20	0.34	0.55	0.11	0.88	0.44	0.28	0.44	1"	GRAY DIE P29 (346)
LAA6-56-T	200		5/16"									0.34			
LAA4-14-C	100	#4 AWG	1/4"	2.32	0.88	0.27	0.47	0.66	0.17	1.00	0.44	0.28	0.56	1-1/16"	GREEN DIE P37 (375)
LAA4-56-C	100		5/16"									0.34			
LAA4-38-C	100		3/8"									0.41			
LAA2-14-70	70	#2 AWG	1/4"	2.63	1.00	0.31	0.53	0.79	0.17	1.12	0.44	0.28	0.68	1"	PINK DIE P42 (348)
LAA2-56-70	70		5/16"									0.34			
LAA2-38-70	70		3/8"									0.41			
LAA1-14-L	50	#1 AWG	1/4"	2.63	1.00	0.35	0.53	0.75	0.17	1.12	0.44	0.28	0.68	1"	GOLD DIE P45 (471)
LAA1-38-L	50		3/8"									0.41			
LAA1/0-56-L	50	#1/0 AWG	5/16"	3.22	1.25	0.39	0.64	0.88	0.25	1.25	0.63	0.34	0.62	1-9/16"	TAN DIE P50 (296)
LAA1/0-38-L	50		3/8"									0.41			
LAA1/0-12-L	50		1/2"									0.53			



NOTES:

1. MATERIAL: SEAMLESS ALUMINUM TUBING, TIN PLATED
2. BARREL COLOR CODED WITH DIE SET INDEX NUMBER
3. FOR STRANDED ALUMINUM AND COPPER WIRE
4. UL LISTED & CSA CERTIFIED TEMPERATURE RATED 90° C (AL9CU)
5. UL LISTED & CSA CERTIFIED VOLTAGE RATING 35 KV
6. ALL DIMENSIONS IN INCHES



REV	DATE	BY	CHK	APR	DESCRIPTION	ECN
00	8/22	JHNU	JHNU	JADE	DRAWING RELEASED	

TITLE		LAA SERIES #6-1/0 ALUMINUM LUGS CUSTOMER DRAWING	
ITEM REVISION NAME	02903NBA/00	PANDUIT	
DATASET FILE NAME	02903NBA-DC r00.SLDDRW		
UNLESS OTHERWISE SPECIFIED, DIMENSIONAL TOLERANCES ARE: IN [mm]		MATERIAL	
.X ±	.XXX ±	SEE NOTES	
.XX ±	ANGLES ±	DRAWING NUMBER	
THIRD ANGLE PROJECTION		02903NBA-DC	
DRAWN BY	DATE	CHK	SCALE
JHNU	8/22		NONE
SHEET 1 OF 1		SIZE	
		B	