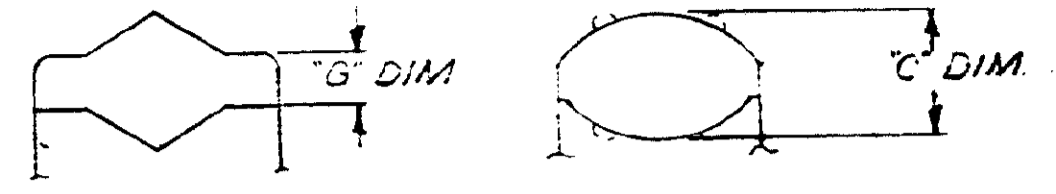
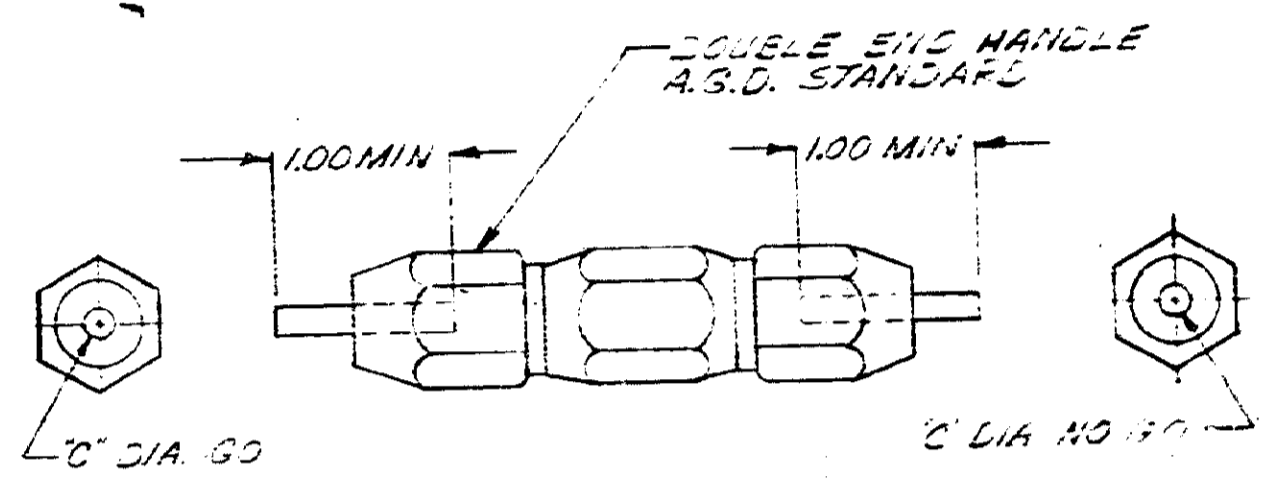


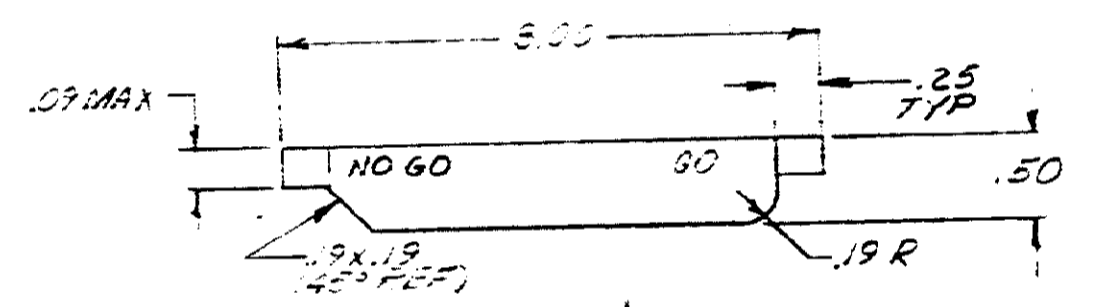
PLUG GAGE DIMENSIONS APPLY WHEN TOOL IS
BOTTOMED BUT NOT UNDER PRESSURE.



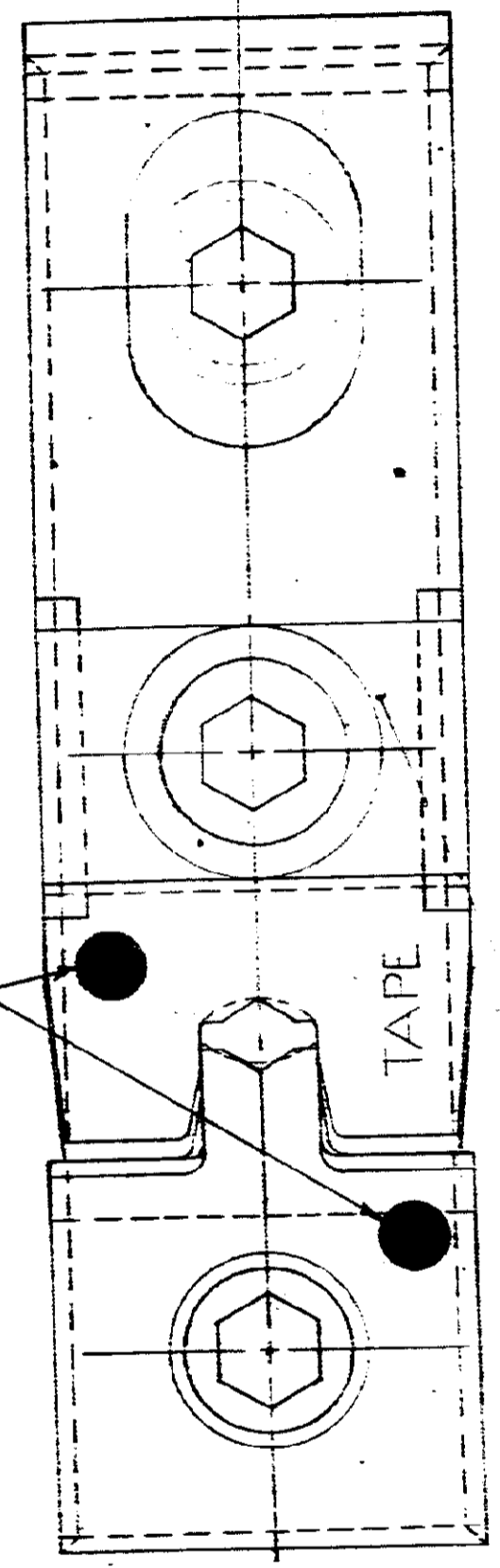
G DIM AT POS. #1		C DIM	
GO	NO GO	GO	NO GO
.030	.650	.089	.095



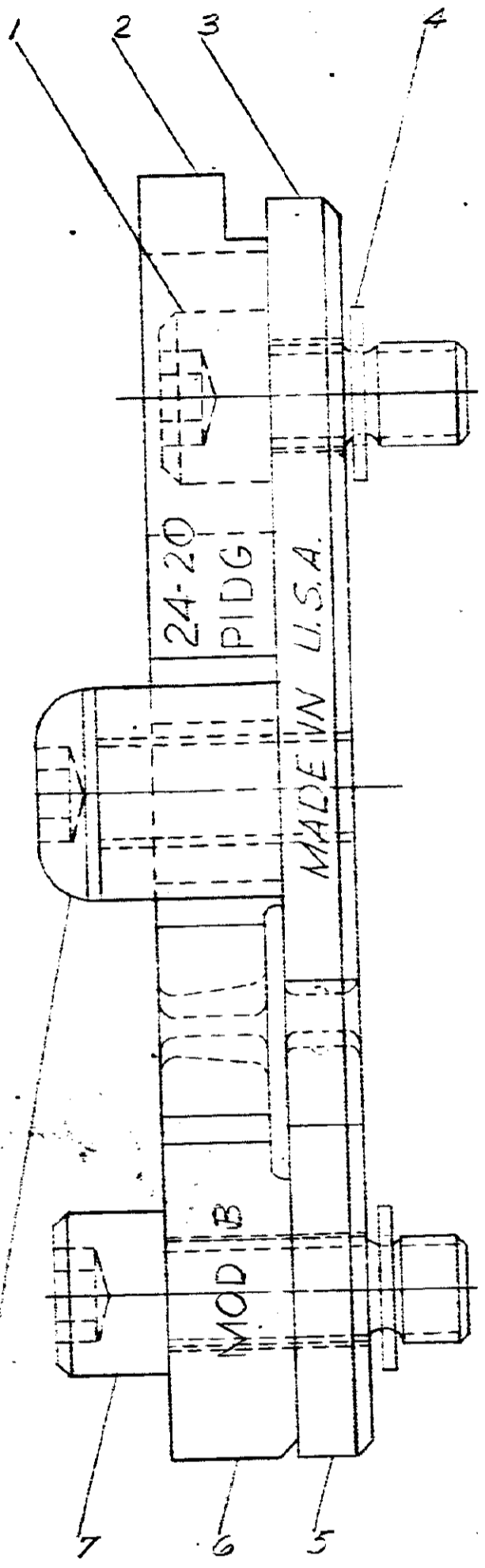
SUGGESTED PLUG GAGE FOR
C DIM BARREL CRIMP



SUGGESTED PLUG GAGE FOR G DIM
INSULATION CRIMP



COLOR CODED:
WHITE



SUPERSEDED BY 15-2423

QTY	NUMBER	NAME	REMARKS	ITEM NO.
1	307275-3	SACULE		2
1	3-39577-0	SCREW (15-32 UNF 3/4 X .445 LONG)		3
1	59781-2	SCREW-SPECIAL		7
1	1-59619-4	ANVIL-INSULATION		6
1	13-59615-0	ANVIL		5
2	1-21046-3	RINS-RETAINING		4
1	59782-8	INDENTER		3
1	307285-4	INDENTER-INSULATION		2
1	59781-3	SCREW-SPECIAL		1

REQUIRED PER ASSEMBLY	©1969 BY AMP INCORPORATED. ALL RIGHTS RESERVED. AMP PRODUCTS COVERED BY PATENTS AND/OR PATENTS PENDING.		CUSTOMER COPY REFERENCE ONLY	
	DATE 11-26-69	MATERIAL AND FINISH +	AMP INCORPORATED HARRINGTON, PENNA.	
	DATE 12-2-69	WIRE - RANGE - INSULATION 24-20	CLASS USED ON 69875	
	DATE 12-2-69	TOLERANCE EXCEPT AS NOTED ± .013 ± .001	TYPE C PIDG	
DESCRIPTION	SCALE 4-1		MFG 69878	
	NAME DIE ASSEMBLY MOD B		REV 62	

REVISION	RECD	DATE
SUPD BY 15-2423		7-29
REVISED		8-24
REVISED		7-20
REVISION RECD	ECM	6-24