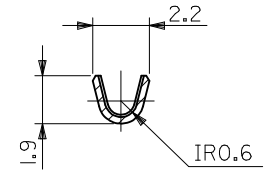
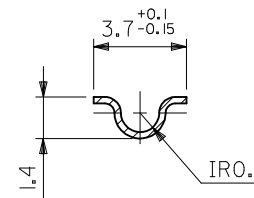


SECT. A-A



SECT. B-B



SECT. C-C

注記 NOTES:

- 1. 一般公差 : ± 0.4
GENERAL TOLERANCES: ± 0.4

材料 MATERIAL	黄銅 BRASS	0.264t
仕上げ FINISH	—	
適用電線範囲 WIRE RANGE	AWG#24-#28	
被覆外径 INS. RANGE	$\Phi 0.8 \sim 1.5$	

REVISED	EC NO: J2017-0534	DRWNIGES	2017/05/08
CHKD:	APPR:MSASAO	2017/05/26	

GENERAL TOLERANCES (UNLESS SPECIFIED)	
0.25 UNDER	\pm
0.25 OVER 0.5 UNDER	\pm
0.5 OVER 1.0 UNDER	\pm
1.0 OVER 10 UNDER	± 0.3
10 OVER 30 UNDER	± 0.25
30 OVER	± 0.2
ANGULAR	$\pm 3^\circ$
DRAFT WHERE APPLICABLE MUST REMAIN WITHIN DIMENSIONS	

DIMENSION STYLE MM ONLY	
DRAWN BY	DATE
H.HASEGAWA	1993/06/18
CHECKED BY	DATE
H.HIRAMOTO	1993/06/18
APPROVED BY	DATE
M.FUKUSHIMA	1993/06/18
MATERIAL NO.	
SEE CHART	
SIZE	A3

SCALE	5:1
DESIGN UNITS	METRIC
THIRD ANGLE PROJECTION	
TITLE .093 DIA. MALE TERM.	
DOCUMENT NO.	
SD-1434*	
SHEET NO. 1 OF 1	

ニッケル (2 μm MIN.) 下地 金 (0.35 μm MIN.) GOLD (0.35 μm MIN.) OVER NICKEL (2 μm MIN.)	39-00-0325	1434G	連鎖状端子 CHAIN
銅 (0.5 μm MIN.) 下地 錫 (0.9 μm MIN.) TIN (0.9 μm MIN.) OVER COPPER (0.5 μm MIN.)	39-00-0324	1434TL	バラ端子 LOOSE
	39-00-0323	1434T	連鎖状端子 CHAIN
メッキ PLATING	EDP.NO.	ENG.NO.	形状 FORM



THIS DRAWING CONTAINS INFORMATION THAT IS PROPRIETARY TO MOLEX ELECTRONIC TECHNOLOGIES, LLC AND SHOULD NOT BE USED WITHOUT WRITTEN PERMISSION