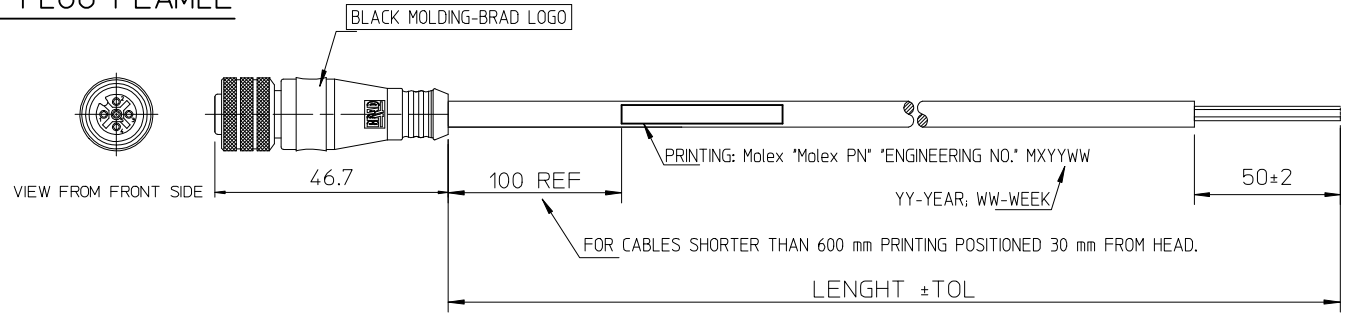


STRAIGHT PLUG FEAMLE

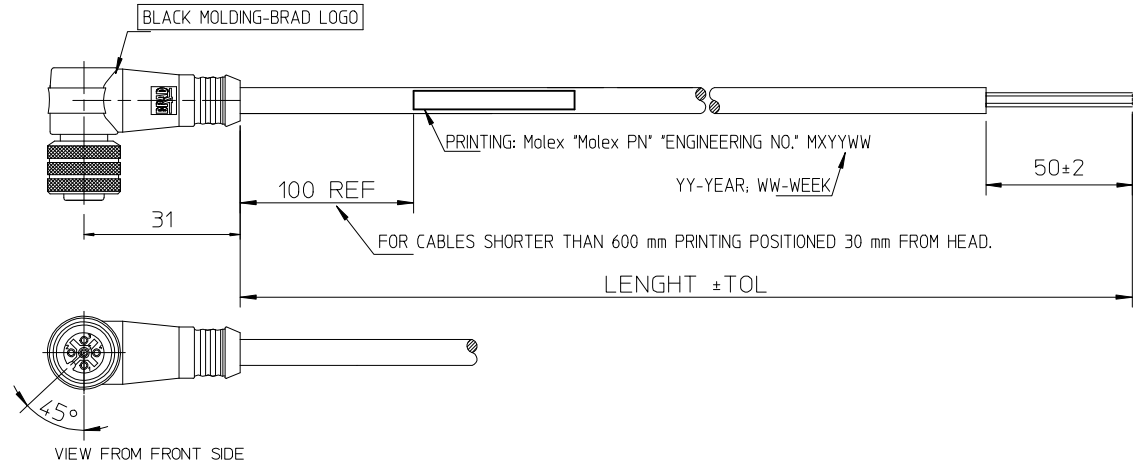
10 9 8 7 6 5 4 3 2 1

WIRING DIAGRAM M12 FEMALE:

3 WIRES		4 WIRES		5 WIRES	
VIEW FROM FRONT SIDE		VIEW FROM FRONT SIDE		VIEW FROM FRONT SIDE	
Pin	Wire color	Pin	Wire color	Pin	Wire color
1	Brown	1	Brown	1	Brown
2	-	2	White	2	White
3	Blue	3	Blue	3	Blue
4	Black	4	Black	4	Black
		5	Grey	5	Grey



90° - PLUG



ENGINEERING P/N KEY DECODING:

0	8	1	2	-	0	X	X	K	F	-	X	X	X	0	0
OVERMOULDED M12 FAMILY					NUMBER OF POLES		TYPE OF CONNECTOR		FEMALE CONNECTOR		LENGTH		TYPE OF CABLE		
					03-3 POLES	1-STRAIGHT				01 = 1m		1 = PVC BLACK 0.25mm ²			
					04-4 POLES	2-90°				02 = 2 m		2 = PUR/PVC BLACK 0.25mm ²			
					05-5 POLES					05 = 5 m		3 = PUR BLACK 0.5mm ²			
										15 = 15 m		4 = PUR BLACK 0.5mm ²			
										20 = 20 m		5 = PUR BLACK 0.34mm ²			
										90 = 90 m		0 = PUR BLACK Z2AWG UL			

CABLE LENGTH IN METER	TILL/DO	OVER - TILL	OVER - TILL	OVER	OVER	OVER
	1m	1-5m	5-10m	10m	20m	30m
MANUFACTURING TOLERANCES MM						
M8/M12 CABLE CONNECTOR MALE OR FEMALE	+20 -10	+25	+30	+30	+50	+60
M8/M12 CABLE CONNECTOR JUMPERCABLE	+20 -10	+25	+30	+30	+50	+60
M23 CABLE CONNECTOR MALE OR FEMALE			+50	+50	+50	+60
M23 CABLE CONNECTOR JUMPERCABLE			+50	+50	+50	+60

PRINTING UPDATE EC NO: IPG2015-1471 DRWN: JMARSZALEK 2013/09/25 CHKD: MSZWAJKOWSKI 2013/09/25 APPR: MIWASIECZKO 2015/03/20	QUALITY SYMBOLS	GENERAL TOLERANCES (UNLESS SPECIFIED)	DIMENSION STYLE	SCALE	DESIGN UNITS	FIRST ANGLE PROJECTION	
	▼=0 ◻=0	mm INCH 4 PLACES ± --- ± --- 3 PLACES ± --- ± --- 2 PLACES ± --- ± --- 1 PLACE ± --- ± --- 0 PLACE ± --- ± ---	MM ONLY	---	METRIC	DRAWN BY: HWALCZAK DATE: 2012/05/10 CHECKED BY: _____ DATE: _____	TITLE: CSE M12 XP AC FE XM SE
		ANGULAR ± --- °	SEE KEY	APPROVED BY: MDYSZEWSKA DATE: 2012/05/28			
		DRAFT WHERE APPLICABLE MUST REMAIN WITHIN DIMENSIONS	SIZE: A3	MATERIAL NO.	DOCUMENT NO.	SHEET NO.	
				THIS DRAWING CONTAINS INFORMATION THAT IS PROPRIETARY TO MOLEX INCORPORATED AND SHOULD NOT BE USED WITHOUT WRITTEN PERMISSION			

9 8 7 6 5 4 3 2 1

STRAIGHT PLUG FEAMLE

WIRING DIAGRAM M12 FEMALE:

3 WIRES

VIEW FROM FRONT SIDE

Pin	Wire color
1	Brown
2	-
3	Blue
4	Black

4 WIRES

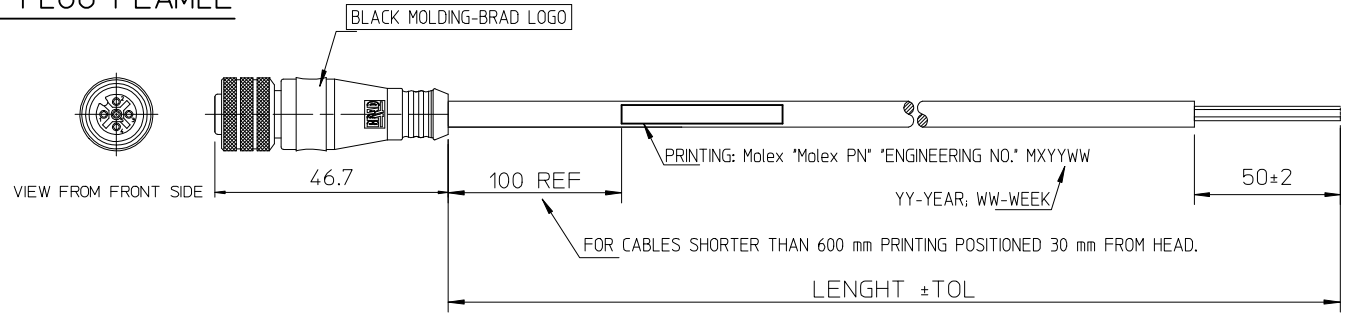
VIEW FROM FRONT SIDE

Pin	Wire color
1	Brown
2	White
3	Blue
4	Black

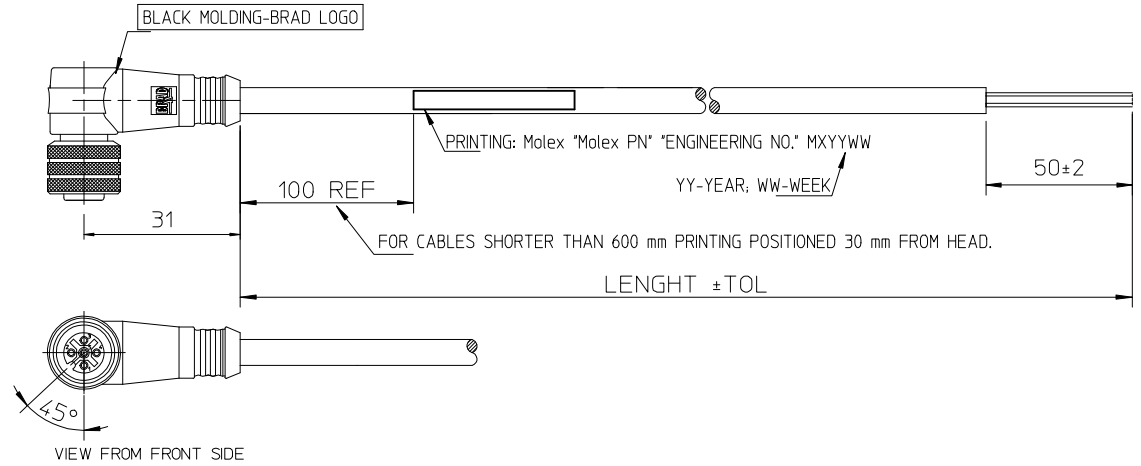
5 WIRES

VIEW FROM FRONT SIDE

Pin	Wire color
1	Brown
2	White
3	Blue
4	Black
5	Grey



90° - PLUG



ENGINEERING P/N KEY DECODING:

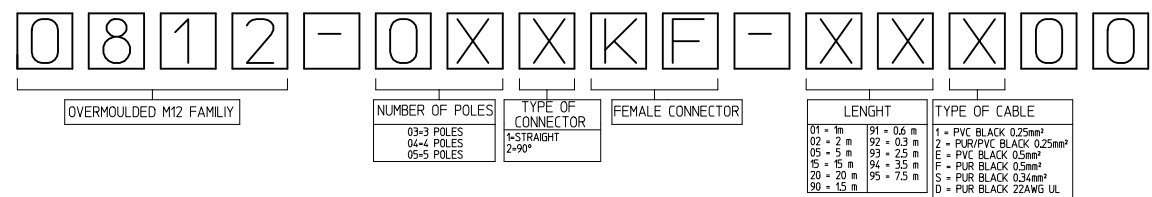


TABLE OF TOLERANCES						
CABLE LENGTH IN METER	TILL/DO	OVER - TILL	OVER - TILL	OVER	OVER	OVER
	1m	1-5m	5-10m	10m	20m	30m
MANUFACTURING TOLERANCES MM						
M8/M12 CABLE CONNECTOR MALE OR FEMALE	+20 -10	+25	+30	+30	+50	+60
M8/M12 CABLE CONNECTOR JUMPERCABLE	+20 -10	+25	+30	+30	+50	+60
M23 CABLE CONNECTOR MALE OR FEMALE			+50	+50	+50	+60
M23 CABLE CONNECTOR JUMPERCABLE			+50	+50	+50	+60

<p>PRINTING UPDATE</p> <p>EC NO: IPG2015-1471</p> <p>DRWN: JMARSZALEK 2013/09/25</p> <p>CHKD: MSZWAJKOWSKI 2013/09/25</p> <p>APPR: MIWASIECZKO 2015/03/20</p>	<p>QUALITY SYMBOLS</p> <p>▽=0</p> <p>◻=0</p>	GENERAL TOLERANCES (UNLESS SPECIFIED)		DIMENSION STYLE MM ONLY		SCALE ---		DESIGN UNITS METRIC		FIRST ANGLE PROJECTION		
				mm	INCH	DRAWN BY HWALCZAK	DATE 2012/05/10	TITLE CSE M12 XP AC FE XM SE				
						CHECKED BY	DATE					
						APPROVED BY MDYSZEWSKA	DATE 2012/05/28					
		ANGULAR ±---°		MATERIAL NO.		DOCUMENT NO.		SHEET NO.				
		DRAFT WHERE APPLICABLE MUST REMAIN WITHIN DIMENSIONS		SEE KEY		SD-120065-053		1 OF 1				
				SIZE A3		THIS DRAWING CONTAINS INFORMATION THAT IS PROPRIETARY TO MOLEX INCORPORATED AND SHOULD NOT BE USED WITHOUT WRITTEN PERMISSION						