

COOL POWER TECHNOLOGIES

Eighth-Brick Isolated DC/DC Converter

Features

- Ultra-wide input voltage range: 9 – 36Vin
- Output: 12V at 8A, 96W max.
- High Efficiency – 92% Typical @ FL
- RoHS 3 Directive 2015/863/EU
- No minimum load/capacitance required
- Low height - 0.465" (11.8mm) max.
- Baseplate Optional 0.500" (12.7mm) tall
- Withstands 50 V input transients
- On-board input differential LC-filter
- Meets UL94, V-0 flammability rating
- Fixed-frequency operation
- Remote voltage sensing
- Industry standard 1/8th brick footprint
- Available in through-hole and SMT versions
- Full protection (OTP, OCP, OVP, UVLO – auto-restart)
- Remote ON/OFF - positive or negative enable logic options
- Output voltage trim range: $\pm 10\%$ (industry-standard trim equations)
- Weight: 0.79 oz (22.4 g) open frame, 1.38 oz (39.1 g) baseplate model
- Compliant to REACH (EC) No 1907/2006, 205 SVHC update
- Complies with UL/CSA60950-1, TUV per IEC/EN60950-1, 2nd edition
- Designed to meet Class B conducted emissions per FCC and EN55032 when used with external filter (see EMC Compliance section below.)



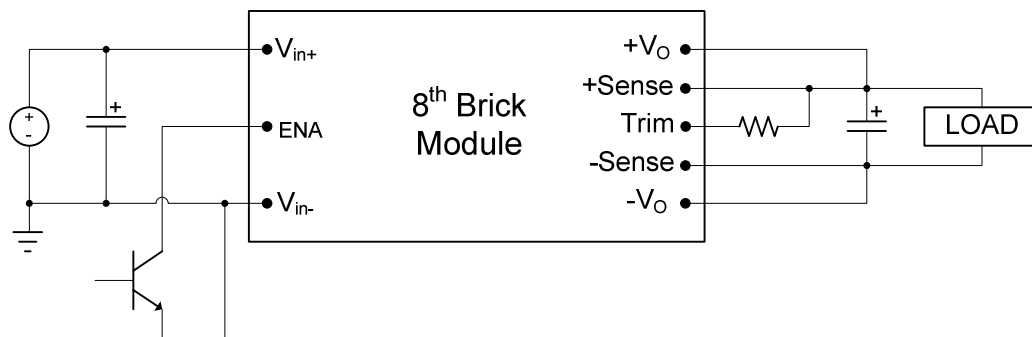
Description

The CPE8B18 “Cool Power Technologies” DC-DC converter is an open frame eighth-brick DC-DC converter that conforms to industry standard specifications. The converter operates over an input voltage range of 9 to 36 VDC, and provides a tightly regulated output voltage with an output current rating of 8 Amps. The output is fully isolated from the input and the converter meets Basic Insulation requirements. The standard feature set includes remote On/Off (positive or negative enable), input undervoltage lockout, output overvoltage protection, overcurrent and short circuit protections, output voltage trim, remote sense and overtemperature shutdown with hysteresis. The high efficiency of the CPE8B18 allows operation over a wide ambient temperature range with minimal derating (see Characteristic Curves section below.)

TABLE OF CONTENTS

| SECTION | PAGE |
|------------------------------------|------|
| FEATURES & DESCRIPTION | 1 |
| APPLICATION DIAGRAM | 2 |
| ELECTRICAL SPECIFICATIONS | 3 |
| CHARACTERISTIC PERFORMANCE CURVES | 6 |
| CHARACTERISTIC WAVEFORMS | 7 |
| APPLICATION NOTES | 8 |
| • RIPPLE MEASUREMENTS TEST SET-UP | 8 |
| • OUTPUT VOLTAGE TRIM EQUATIONS | 9 |
| • THERMAL DERATING | 10 |
| • EMC COMPLIANCE | 12 |
| MECHANICAL OUTLINE & PCB FOOTPRINT | 13 |
| ORDERING INFORMATION | 15 |

APPLICATION DIAGRAM



ELECTRICAL SPECIFICATIONS

9–36Vin, 12V/8Aout

Conditions: $T_A = 25\text{ }^\circ\text{C}$, Airflow = 300 LFM, $V_{in} = 24\text{ VDC}$, $C_{in} = 100\text{ }\mu\text{F}$, unless otherwise specified.

| Input Characteristics | | | | | |
|--|---|-------|---------|----------|----------------------------|
| Parameter | Conditions | Min | Typ | Max | Unit |
| Operating Input Voltage Range | | 9 | 24 | 36 | VDC |
| Input Under-Voltage Lock-out | | | | | |
| Turn-on Threshold | | 9.5 | 9.7 | 9.9 | VDC |
| Turn-off Threshold | | 8.1 | 8.4 | 8.7 | |
| Input Voltage Transient | 100ms | | | 50 | VDC |
| Maximum Input Current | $V_{IN} = 9\text{VDC}; I_{out} = 8\text{A}$ | | | 12.6 | A |
| Input Standby Current | Converter Disabled | | 2 | 5 | mA |
| Input No-Load Current | Converter Enabled | | 85 | 100 | mA |
| Short Circuit Input Current | RMS | | 30 | | mA |
| Input Reflected Ripple Current | 5Hz to 50MHz See Fig 13 for setup | | 50 | 70 | $\text{mA}_{\text{PK-PK}}$ |
| Input Voltage Ripple Rejection | 120Hz | | 50 | | dB |
| Inrush Current | All | - | - | 0.01 | A^2/s |
| Output Characteristics | | | | | |
| Parameter | Conditions | Min | Typ | Max | Unit |
| Output Voltage Set point | Sense pins connected to output pins | 11.82 | 12 | 12.18 | VDC |
| Output Current | | 0 | | 8 | A |
| Output Current Limit Inception | | 8.5 | 11 | 15 | A |
| Peak Short-Circuit Current | 10m Ω Short | | | 20 | A |
| RMS Short-Circuit Current | 10m Ω Short | | | 2.3 | A_{RMS} |
| External Load Capacitance ² | | 0 | | 2200 | μF |
| Output Ripple and Noise | 20MHz Bandwidth 1 μF Ceramic + 10 μF Tantalum See Fig 14 for setup | | 80 | 150 | $\text{mV}_{\text{PK-PK}}$ |
| Output Regulation | | | | | |
| Line: | | | ± 5 | ± 10 | mV |
| Load: | | | ± 5 | ± 10 | mV |
| Overall Output Regulation: | Over line, load & temp. | 11.64 | | 12.36 | V |



ELECTRICAL SPECIFICATIONS (continued)

9–36Vin, 12V/8Aout

Conditions: $T_A = 25\text{ }^\circ\text{C}$, Airflow = 300 LFM, $V_{in} = 24\text{ VDC}$, $C_{in} = 100\text{ }\mu\text{F}$, unless otherwise specified.

| Absolute Maximum Ratings | | | | | |
|--|--|------|------|------|------------------|
| Parameter | Conditions | Min | Typ | Max | Unit |
| Input Voltage | Continuous Operation | 0 | | 75 | VDC |
| Operating Ambient Temperature | w/derating | -40 | | +85 | $^\circ\text{C}$ |
| Operating Temperature T_{ref} , see Thermal Derating section | Open Frame | -40 | | +123 | $^\circ\text{C}$ |
| | Baseplate Option | -40 | | +115 | $^\circ\text{C}$ |
| Storage Temperature | | -55 | | +125 | $^\circ\text{C}$ |
| Feature Characteristics | | | | | |
| Parameter | Conditions | Min | Typ | Max | Unit |
| Switching Frequency | | | 350 | | kHz |
| Output Voltage Trim Range ¹ | | -10 | | +10 | % |
| Remote Sense Compensation ¹ | | | | +10 | % |
| Output Over-voltage Protection | Non-latching | 115 | 125 | 140 | % |
| Over-temperature Protection | Avg. PCB temp, non-latching | | 135 | | $^\circ\text{C}$ |
| Peak Backdrive Output Current during startup into prebiased output | Sinking current from external voltage source equal to $V_{OUT} - 0.6\text{V}$ and connected to the output via 1Ω resistor. $C_{OUT}=220\mu\text{F}$, Aluminum | | 500 | | mA |
| Backdrive Output Current in OFF state | Converter disabled | | 0 | 5 | mA |
| Enable to Output Turn-ON Time | $V_{OUT} = 0.9 \cdot V_{OUT_NOM}$ | | 20 | | ms |
| Output Enable ON/OFF Negative Enable Converter ON Converter OFF Positive Enable Converter ON Converter OFF | All voltages are WRT $-V_{in}$. | -0.5 | | 0.8 | VDC |
| | | 2.4 | | 20 | VDC |
| | Converter has internal pull-up of approx. 5V | 2.4 | | 20 | VDC |
| | | -0.5 | | 0.8 | VDC |
| Enable Pin Current Source/Sink | | | 0.25 | 1 | mA |
| Output Voltage Overshoot @ Startup | | | 0 | 2 | %Vo |
| Auto-Restart Period | (all protection features) | | 100 | | ms |



ELECTRICAL SPECIFICATIONS (continued)

9–36Vin, 12V/8Aout

Conditions: Ta = 25 °C, Airflow = 300 LFM, Vin = 24 VDC, Cin=100 µF, unless otherwise specified.

| Efficiency | | | | | |
|--|--|------|-----------|-----|------------------------|
| Parameter | Conditions | Min | Typ | Max | Unit |
| Full Load | Vin = 12Vin | 91.5 | 92 | | % |
| | Vin = 24Vin | 91 | 92 | | % |
| 50% Load | Vin = 12Vin | 92 | 93 | | % |
| | Vin = 24Vin | 90 | 91 | | % |
| Dynamic Response | | | | | |
| Parameter | Conditions | Min | Typ | Max | Unit |
| Load Change 50%-75% or 25% to 50% of Iout Max, di/dt = 0.1 A/µs | Co = 1 µF ceramic + 10 µF tantalum | | 100 | 200 | mV |
| Settling Time to 1% of Vout | | | 50 | | µs |
| Load Change 25%-75% of Iout Max, di/dt = 0.25 A/µs | Co = 1 µF ceramic + 100 µF electrolytic | | 150 | 200 | mV |
| Settling Time to 1% of Vout | | | 50 | | µs |
| Isolation Specifications | | | | | |
| Isolation Capacitance | | | 1000 | | pF |
| Isolation Resistance | | 10 | | | MΩ |
| Isolation Voltage | Input to Output | 2250 | | | V _{DC} |
| | Input to baseplate | 1500 | | | V _{DC} |
| | Output to baseplate | 1000 | | | V _{DC} |
| Reliability | | | | | |
| Per Telcordia SR-332, Issue 2: Method I, Case 3 (Io=80% of Io_max, TA=40°C, airflow = 200 lfm, 90% confidence) | MTFB | | 3,323,205 | | Hours |
| | FITs (failures in 10 ⁹ hours) | | 301 | | /10 ⁹ Hours |

Notes:

- 1) Combination of remote sense + trim up not to exceed 10% of V_{onom}.
- 2) Consult factory if higher output capacitance capability is required

CHARACTERISTIC CURVES:

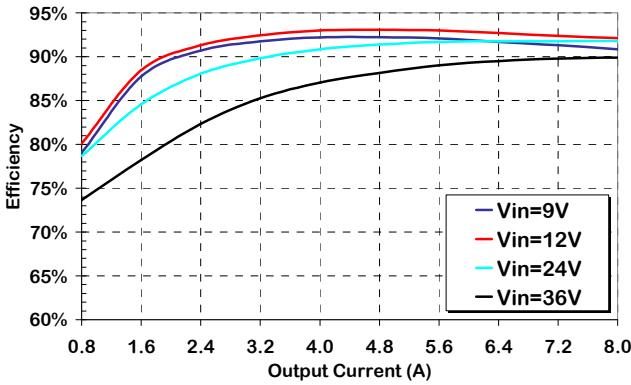


Figure 1. Efficiency vs Output Current, 300lfm airflow, 25°C ambient.

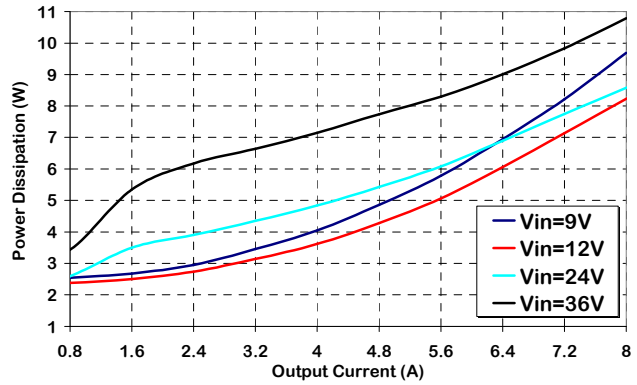


Figure 2. Power Dissipation vs. Load Current, 300lfm airflow, 25°C ambient.

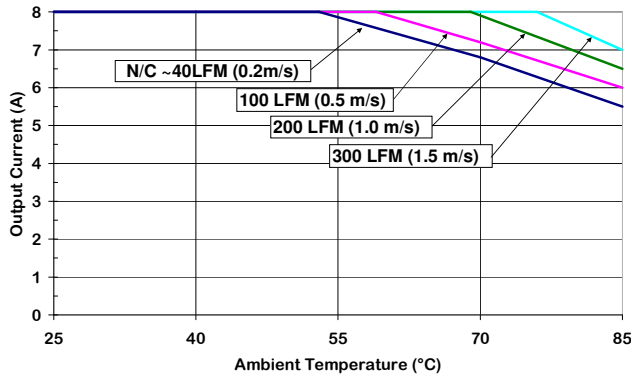


Figure 3. Output Current Derating vs Ambient Temperature & Airflow (air flowing from pin 3 to pin 1, Vin = 24 V, without baseplate)

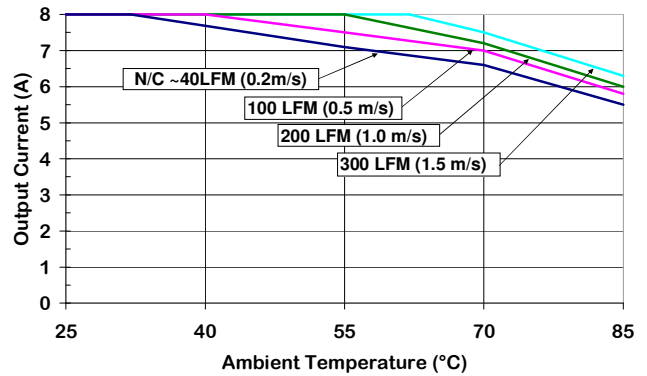


Figure 4. Output Current Derating vs Ambient Temperature & Airflow (air flowing from pin 3 to pin 1, Vin = 12 V, without baseplate)

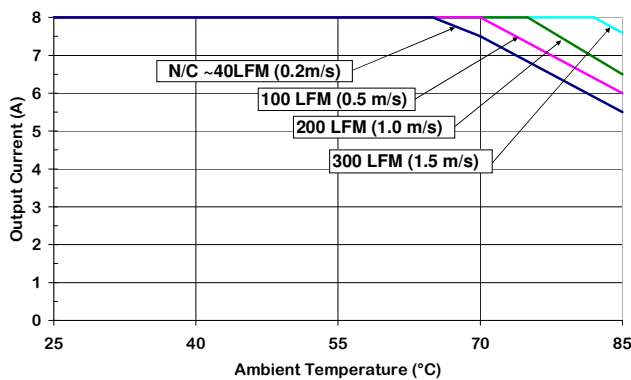


Figure 5. Output Current Derating vs Ambient Temperature & Airflow (air flowing from pin 3 to with pin 1, Vin = 24 V, with baseplate)

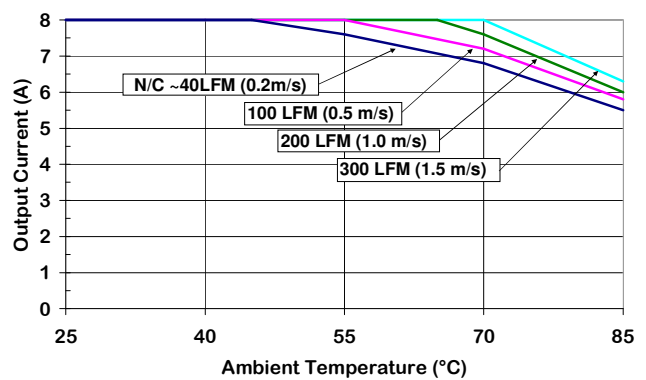


Figure 6. Output Current Derating vs Ambient Temperature & Airflow (air flowing from pin 3 to with pin 1, Vin = 12 V, with baseplate)

CHARACTERISTIC WAVEFORMS:

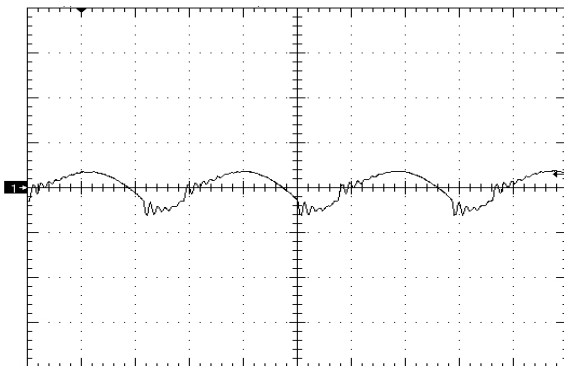


Figure 7. Output Voltage Ripple (50mV/div), time scale – 1uS/div. Vin=Vin_nom, full resistive.

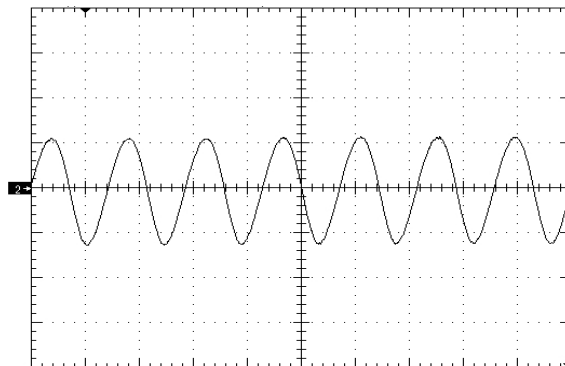


Figure 8. Input Reflected Ripple Current (20mA/div) time scale - 2uS/div. Vin=Vin_nom, full resistive.

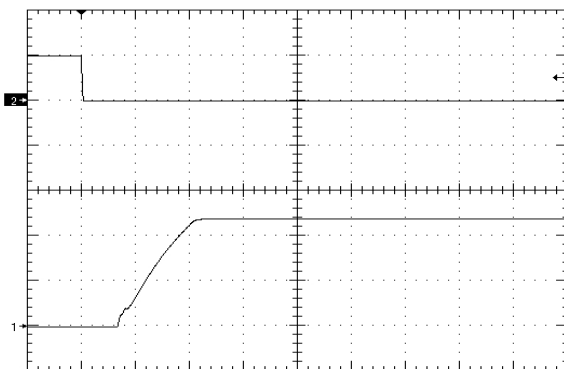


Figure 9. Startup Waveform via Enable Pin, time scale 10mS/div. Vin=Vin_nom, full resistive load (negative enable.) Ch1,Ch2=5V/div

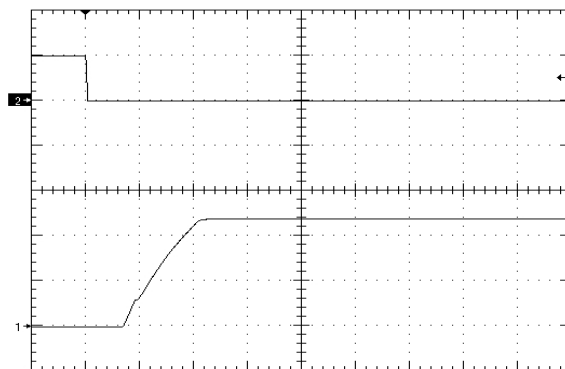


Figure 10. Startup Waveform via Enable Pin, time scale 10mS/div. Vin=Vin_nom, full resistive load + 2200uF (negative enable.) Ch1,Ch2=5V/div

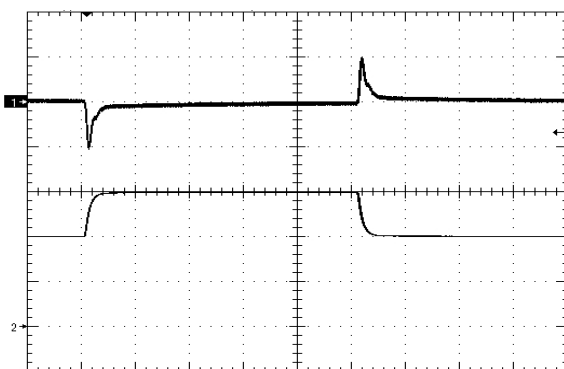


Figure 11. Load Transient Response (100mV/div), di/dt=0.1A/uS, 50% - 75% - 50% of full load, time scale: 200uS/div.

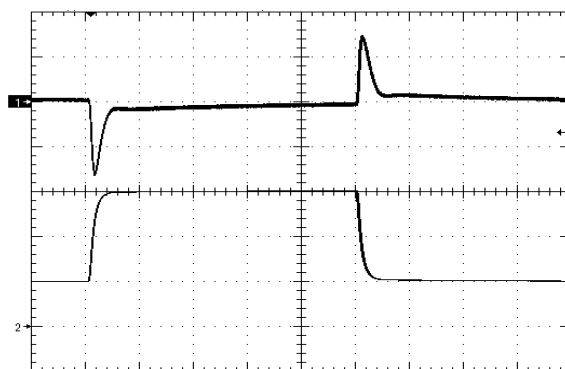


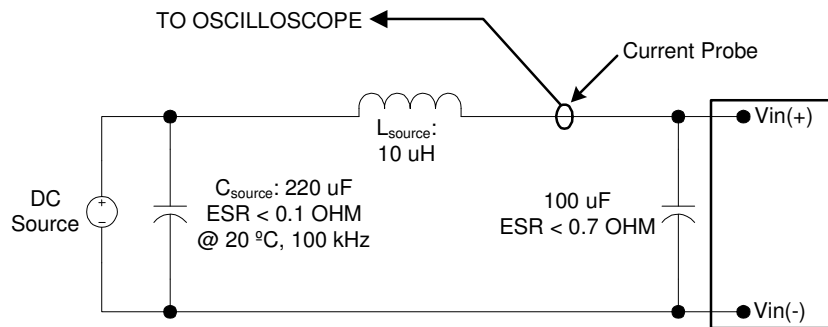
Figure 12. Load Transient Response (100mV/div), di/dt=0.25A/uS, 25% - 75% - 25% of full load, +100uF electrolytic, time scale: 200uS/div



Application Notes

Input Voltage Reflected Ripple Measurement

- INPUT REFLECTED RIPPLE TEST SETUP:

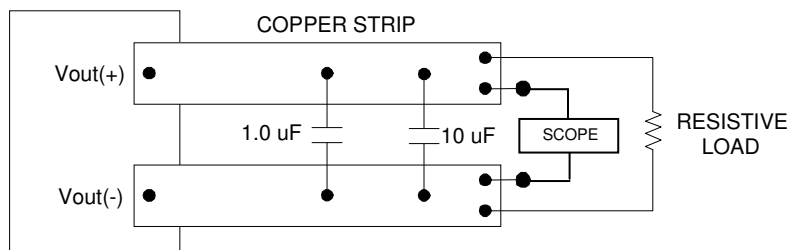


Note: Measure input reflected-ripple current with a simulated source inductance (L_{test}) of 10 μ H. Capacitor C_s offsets possible source impedance.

Figure 13. Input Reflected-ripple Current Test Setup.

Output Voltage Ripple Measurement

- OUTPUT RIPPLE TEST SETUP:



Note: Use a 1 μ F X7R ceramic capacitor and a 10 μ F tantalum capacitor. Scope measurement should be made using a BNC socket. Position the load 3 in. [76mm] from module.

Figure 14. Peak-to-Peak Output Noise Measurement Test Setup.

Application Notes (cont)

Output Voltage Trim

Output voltage adjustment is accomplished by connecting an external resistor between the Trim Pin and either the +Sense or -Sense pins.

- TRIM UP EQUATION:**

$$R_{\text{trim_up}} = \left[\frac{5.1 \times V_{o_nom} \times (100 + \Delta\%)}{1.225 \times \Delta\%} - \frac{510}{\Delta\%} - 10.2 \right] \times \text{k}\Omega$$

Where $R_{\text{trim_up}}$ is the resistance value in k-ohms and $\Delta\%$ is the percent change in the output voltage. E.g. to

trim the output up 10%, $R_{\text{trim_up}} = \left[\frac{5.1 \times 12 \times (100 + 10)}{1.225 \times 10} - \frac{510}{10} - 10.2 \right] \times \text{k}\Omega$ or $R_{\text{trim_up}} = 488\text{k}\Omega$.

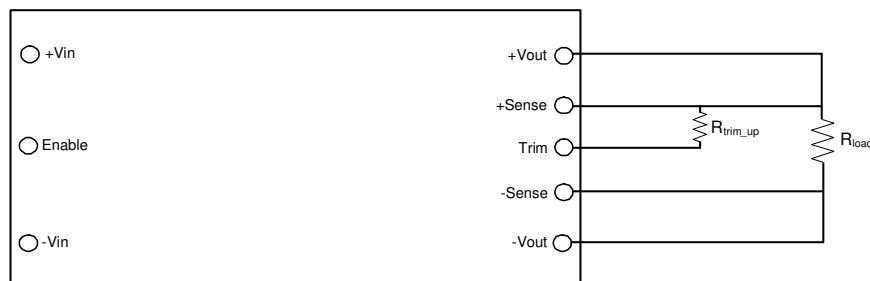


Figure 15. Trim UP circuit configuration

- TRIM-DOWN EQUATION:**

$$R_{\text{trim_down}} = \left(\frac{510}{\Delta\%} - 10.2 \right) \times \text{k}\Omega$$

Where $R_{\text{trim_down}}$ is the resistance value in k ohms and $\Delta\%$ is the percent change in the output voltage.

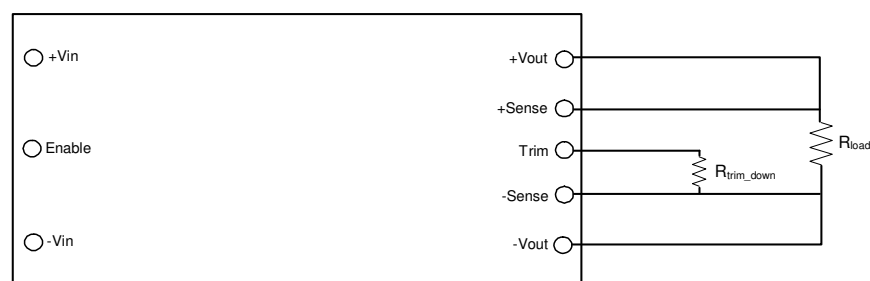


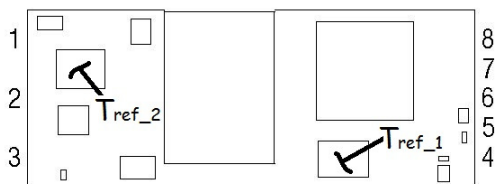
Figure 16. Trim DOWN circuit configuration



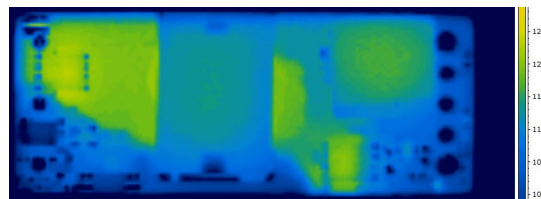
Application Notes (cont)

Thermal Derating

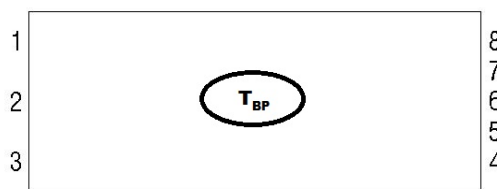
- It is preferable that the DC-DC module have an unobstructed flow of air across it for best thermal performance. Components taller than ~ 2mm in front of the module can deflect airflow and possibly create hotspots.
- Significant cooling is achieved through conductive flow from the modules I/O pins to the host PCB. Sufficiently large traces connecting the dc-dc converter to the source and load will help ensure thermal derating performance will meet or exceed the derating curves published in this datasheet.
- If the module is expected to be operated near the load limits defined in the derating curves, in-system verification of module derating performance should be performed to ensure long-term system reliability. Peak temperatures are to be measured using infrared thermography or by gluing a fine gauge (AWG #40) thermocouple at the T_{ref} location(s) shown below. T_{ref_2} should be monitored for input voltages below 30 Vin, T_{ref_1} for input voltages > 30 Vin. Temperatures at the specified location(s) are not to exceed 123°C in order to maintain converter reliability. For baseplate models, T_{BP} should not exceed 115°C.
- Note that the lower profile -4 option lowers the derating curves (See Characteristic Curves section) by 0.5 Amp at all airflows & temperatures.



Open Frame Measurement Points



Thermal Image of module @ 24Vin, 200LFM & 70C



Baseplate Measurement Point

Input Undervoltage Lockout

- The converter is disabled until the input voltage has exceeded the UVLO turn-on threshold. Once the input voltage exceeds this level (see Input Under-Voltage Lock-out in Electrical Specifications table) the module will commence soft-start. Hysteresis minimizes the likelihood of pulling the input voltage below the turn-off threshold during startup which could create an undesirable on/off cycling condition. The converter will continue to operate until the input voltage subsequently falls below the UVLO turn-off threshold.

Application Notes (cont)

Enable Pin Function

- The module has a remote enable function that allows it to be turned on or off remotely. The Enable pin is referenced to the negative input pin (-Vin) of the converter. Modules can be ordered with either negative or positive enable.
- The negative enable option the module will not turn on unless the enable pin is connected to -Vin. The positive enable option allows the converter to turn on as soon as voltage sufficient to exceed the UVLO of the converter has been applied to the input terminals. In this case the module is turned off by connecting the Enable pin to -Vin. On/off thresholds are located in the Electrical Specifications table.

Output Overvoltage Protection

- The module has an independent feedback loop that will disable the output of the converter if a voltage greater than about 125% of the nominal set point is detected. When this threshold is reached, the converter will shut down and remain off for the amount of time specified by the Auto-Restart Period. The converter will attempt a restart once this period of time has elapsed.

Output Overtemperature Protection

- To provide protection under certain fault conditions, the unit is equipped with a thermal shutdown circuit. The unit will shutdown if the average PCB temperature exceeds approx. 135°C, but the thermal shutdown is not intended as a guarantee that the unit will survive temperatures beyond its rating. The module will automatically restart once it has cooled below the shutdown temperature minus hysteresis (typically 20 deg C.)

SMT Version Layout Considerations (if applicable)

- Copper traces with sufficient cross-section must be provided for all output & input pins. SMT pads tied to internal power/ground planes must have multiple vias around each SMT pad to couple expected current loads from module pins into internal traces/planes. One 0.024" (0.6mm) diameter via for each 4A of expected source or load current must be provided as close to the termination as possible, preferably in the direction of current flow from SMT pad to load. Vias must be at least 0.024" (0.6 mm) away from the SMT pad to prevent solder from flowing into the vias.
- SMT pads on the host card are to be 0.080" (2.03 mm) diameter. Solder paste screen opening should be 0.075" (1.9 mm) diameter and the screen should be 0.006" (0.15 mm) thick (other thicknesses are possible; 0.006" provides a good compromise between solder volume and coplanarity compensation.)

Paralleling Converters

- Modules may be paralleled but it is recommended that the total power draw not exceed the output power rating of a single module. External sharing controllers are recommended for reliability and to ensure equal distribution of the load to the converters.



Application Notes (cont)

EMC Compliance

To meet Class B compliance for EN55032 (CISPR 32) or FCC part 15 sub part j, the following input filter is required:

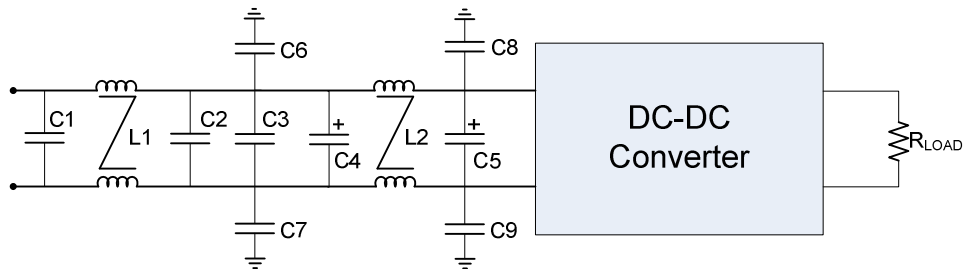


Figure 17. EMI Filter

| | |
|--------------|--|
| L1, L2 = | 0.63 mH Common Mode Inductor (Pulse P0469NL) |
| C1, C2, C3 = | 2.2uF ceramic |
| C4 = | Not used |
| C5 = | 220uF electrolytic |
| C6, C7 = | 8.2nF (@2kV if output is ref. to gnd.) |
| C8, C9 = | 8.2nF (@2kV if output is ref. to gnd.) |

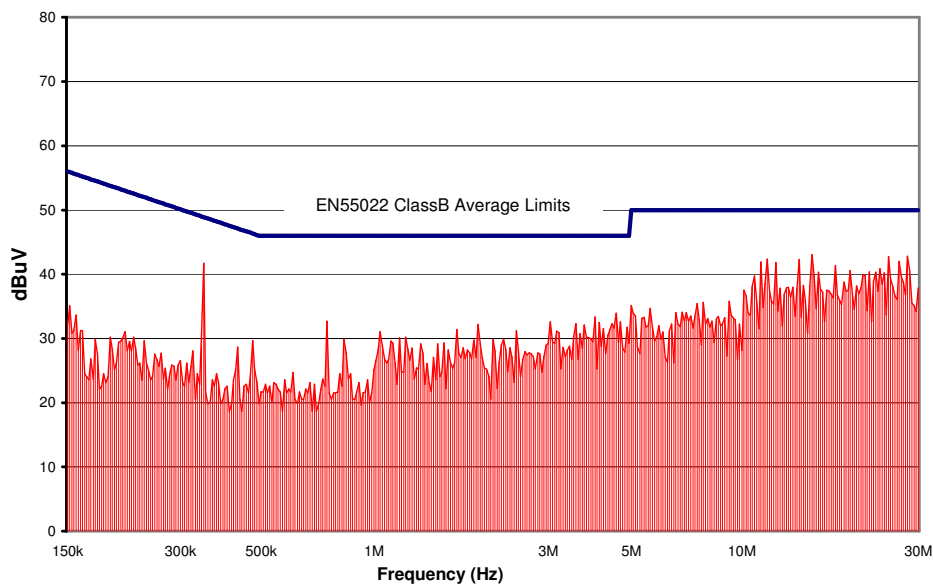
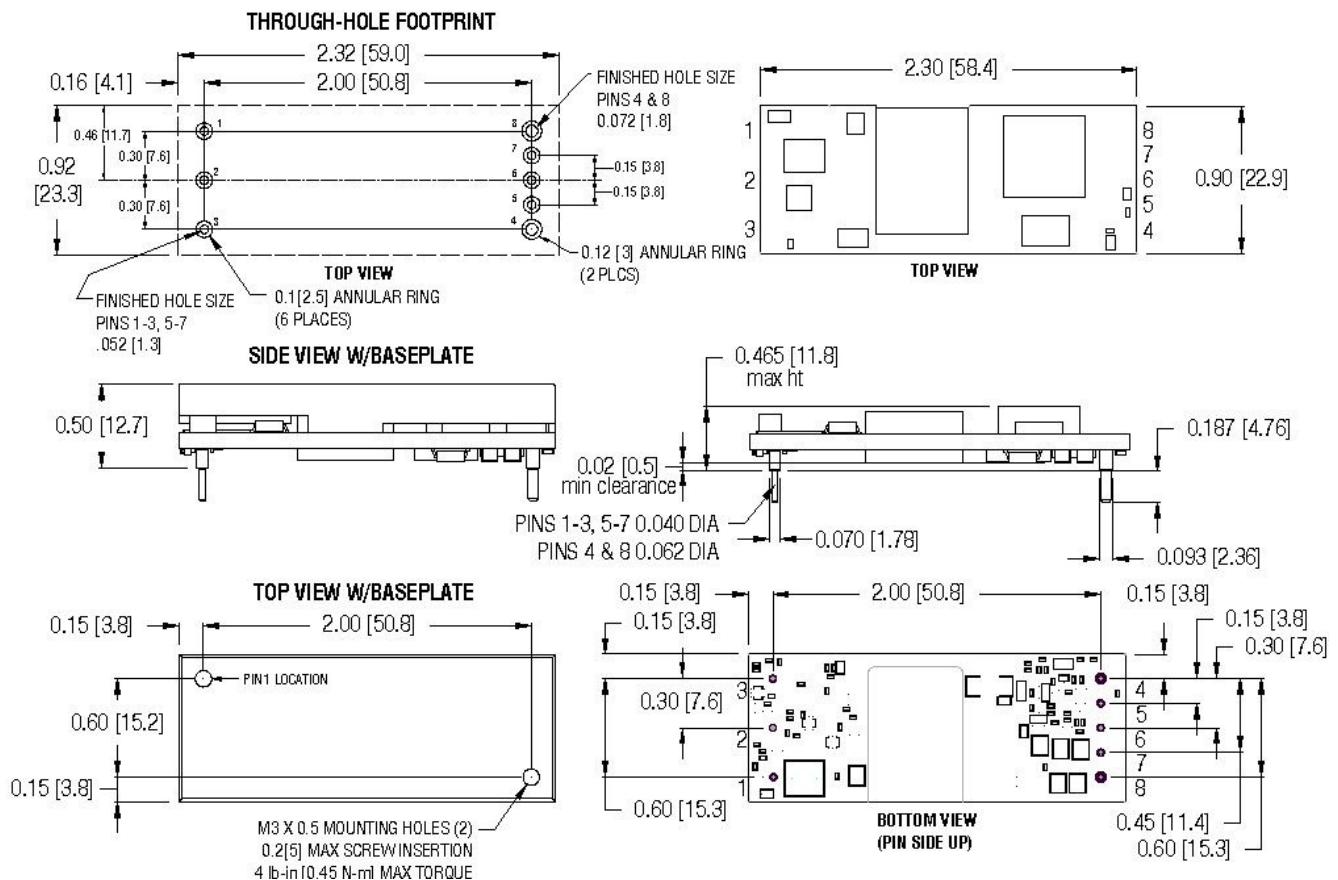


Figure 18. CPE8B18 Conducted Emissions using above specified input filter, Vin = 24V, Full Resistive Load

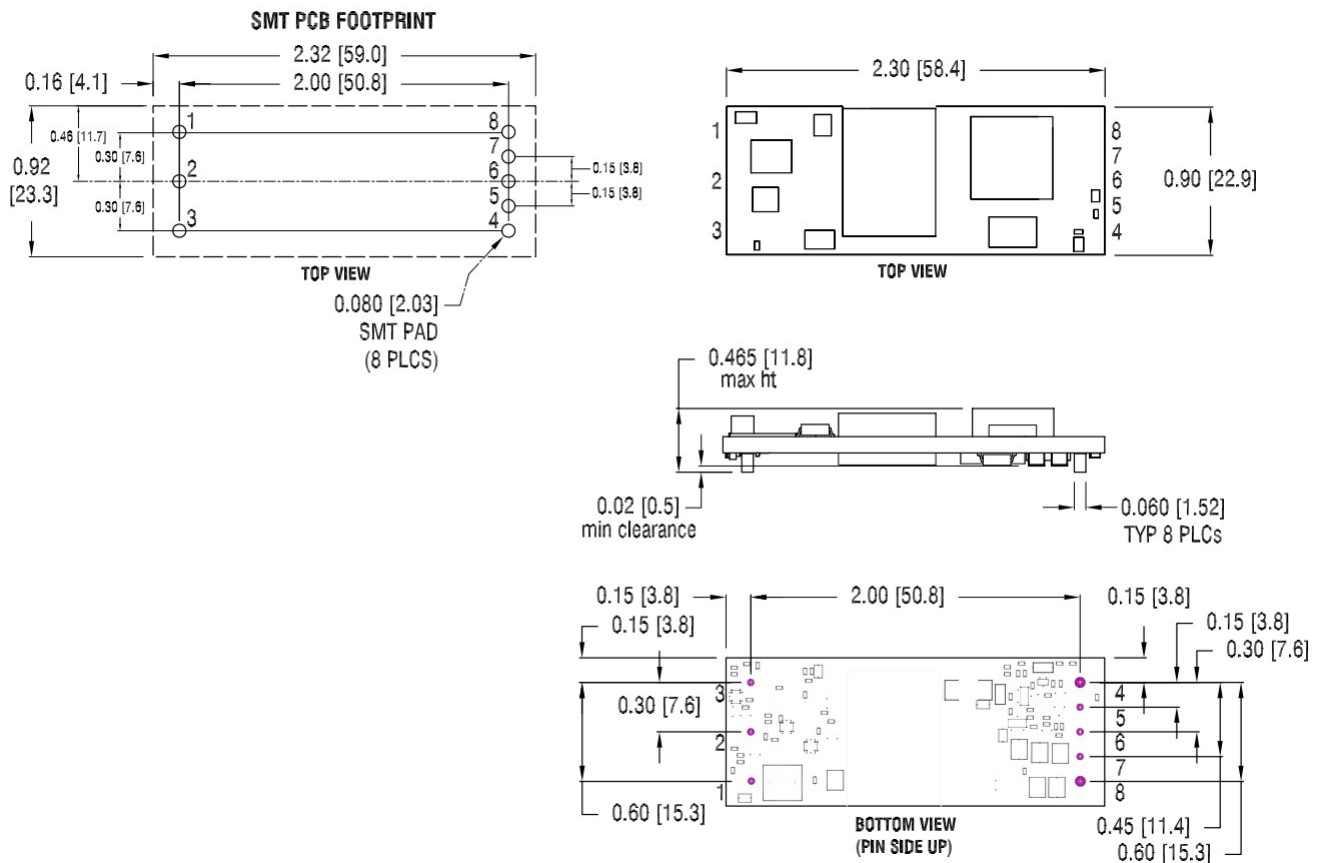
MODULE PIN ASSIGNMENT:

| PIN # | DESIGNATION | NOTES |
|-------|----------------------|--|
| 1 | V _{IN} (+) | 1) All dimensions in inches [mm] Tolerances: .xx ± 0.02 [.x ± .5] .xxx ± 0.010 [.xx ± .25] 2) Input, on/off control and sense/trim pins are Ø 0.040" [1.02] with Ø 0.070" [1.77] standoff shoulders. 3) Output pins are Ø 1.57 mm (0.062") with Ø 0.093" [2.36] shoulders (note, shoulder sits .008" above mounting surface) 4) All pins are gold plated with nickel under plating. 5) Weight: 22.4 g (0.79 oz.) open frame 39.1 g (1.38 oz.) baseplate model 6) Workmanship: Meet or exceeds IPC-A-610 Class II |
| 2 | On/Off | |
| 3 | V _{IN} (-) | |
| 4 | V _{OUT} (-) | |
| 5 | Sense (-) | |
| 6 | Trim | |
| 7 | Sense (+) | |
| 8 | V _{OUT} (+) | |

MECHANICAL OUTLINE through-hole:



MECHANICAL OUTLINE SMT:



ORDERING INFORMATION:

| Product Identifier | Output Current | Output Voltage | Input Voltage | Enable logic option | Additional features | |
|---------------------|----------------|----------------|---------------|------------------------------|---|--------------------------------|
| CPE | 8 | B | 18 | N or P | S or B ¹ | 4 ² |
| “Cool Power Eighth” | 8A | 12V | 9 – 36V | N = Negative P = Positive | S = Surface Mount B = Baseplate Option | 0.4” (10.3mm) max height |

1. Unit cannot be ordered with both baseplate and surface mount options
2. Only non-baseplate versions can be ordered with -4 option; e.g. CPE8B18N4 or CPE8B18NS4
Also see thermal derating section for info on reduced thermal derating w/lower profile

Rev 1.01, 18-March-21

