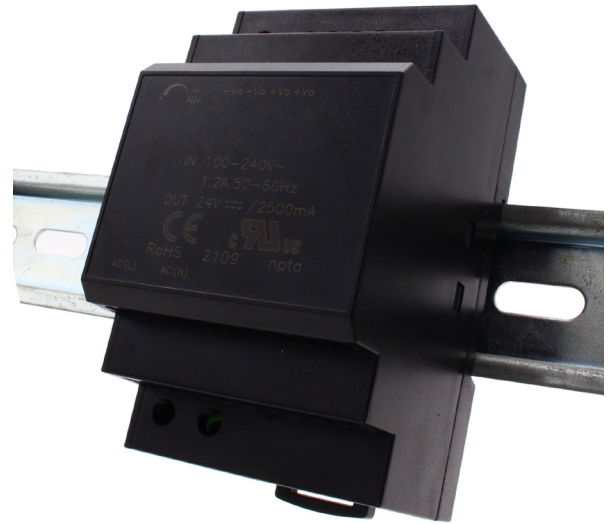


## PW-245

## 60W Single Output Industrial DIN Power Supply

60W 24V Power output with Integral DIN mount

- Universal 85-264VAC or 120-370VDC input Voltage
- Operating temperature range: -40°C to +70°C/-40°F to 158°F
- High I/O isolation test Voltage up to 4000VAC
- Over-voltage class III (Designed to meet EN61558-1 safety standards)
- Low standby power consumption, high efficiency
- Output short circuit, over-current, over-Voltage protection



Featuring a cost-effective, energy efficient solution for standard DIN-rail mounting. The products offer a high level of stability and immunity to noise, compliant with international standards for EMC and safety meeting IEC/EN61000-4, CISPR32, EN55032, UL62368, IEC62368 and EN62368.

These light weight AC-DC converters also have an extremely compact design for space saving and are ideal for applications such as industrial control equipment machinery and all kinds of applications in a harsh environment.

### INPUT

Voltage	85VAC to 264VAC or 120VDC to 370VDC.
Frequency	47Hz to 63Hz
Current	1.2A@115VAC, 0.8A@230VAC
Inrush Current	30A@115VAC, 60A@230VAC
Leakage Current	0.25mA RMS Max

### OUTPUT

Voltage	24V
Voltage Adj. Range	21.6V to 29.0V
Output Voltage Accuracy	+/-2%
Line Regulation	+/-0.5%
Load Regulation	+/-1.5%
Output Ripple & Noise	150mV
Efficiency	>85%
Power	60W

UK +44 (0)151 220 2500 // USA +1 855 958 2502  
 www.brainboxes.com // sales@brainboxes.com

# PW-245

## 60W Single Output Industrial DIN Power Supply

Wire Gauge	24-12AWG
Pitch	Output 5mm, Input 10mm

### PROTECTION

Short Circuit Protection	Hiccup, Continuous Self Recovery
Over Current Protection	>120%Io, Self Recovery
Over Voltage Protection	<=36V

### ELEC. CHAR.

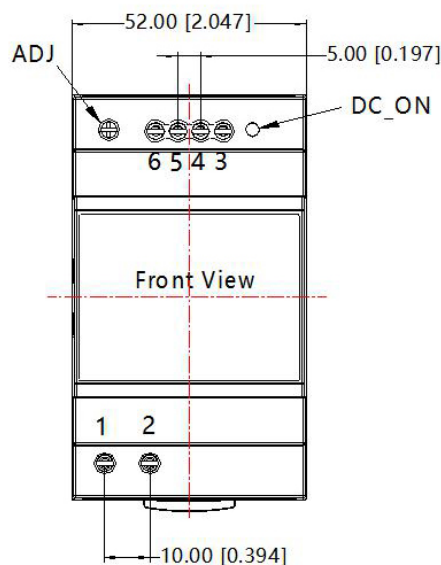
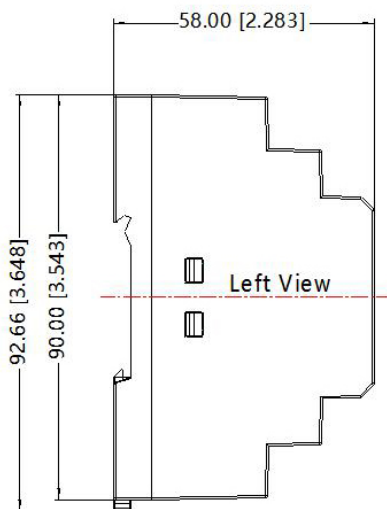
Start-Up Delay	3 Seconds
Hold-Up Time	115VAC: 15mS 230VAC 80mS

### ENVIRONMENT

Operating Temperature	-40°C to +70°C/-40°F to +158°F
Storage Temperature	-40°C to +85°C/-40°F to +185 °F

Industry Approvals	IEC62368, IEC/EN61000-4, CISPR32, EN55032, UL62368, IEC62368 and EN62368 Microsoft Certified Gold Partner, WEEE, RoHS, AEO (C-TPAT), CE, UKCA
HTS	8471800000
ECCN	4A994
CAGE	8QCY6

Weight	0.228kg, 8.04 ounces
Dims	133 x 90 x 64mm, 5.2 x 3.5 x 2.5 in
GTIN Universal Code	837324004755



Pin-Out	
Pin	LI60-20B
1	AC(L)
2	AC(N)
3	+Vo
4	+Vo
5	-Vo
6	-Vo