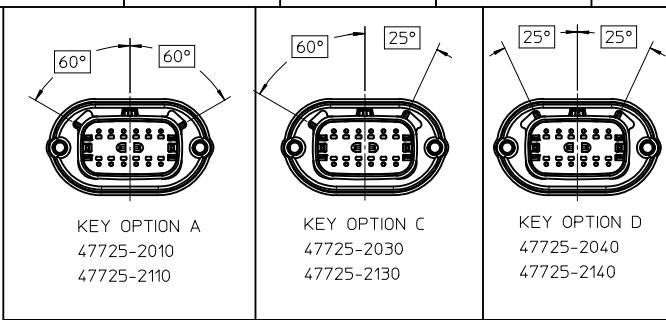
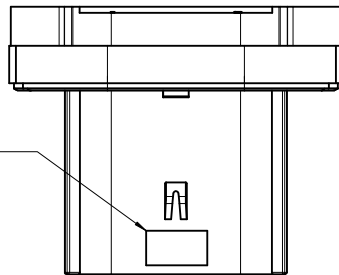
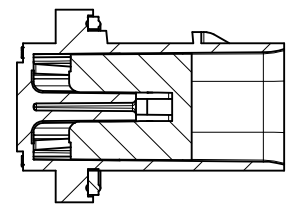


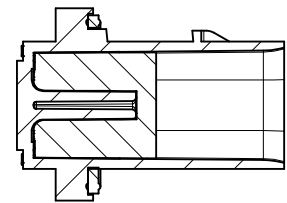
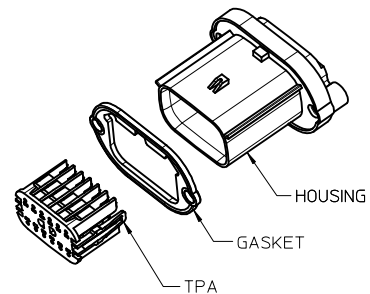
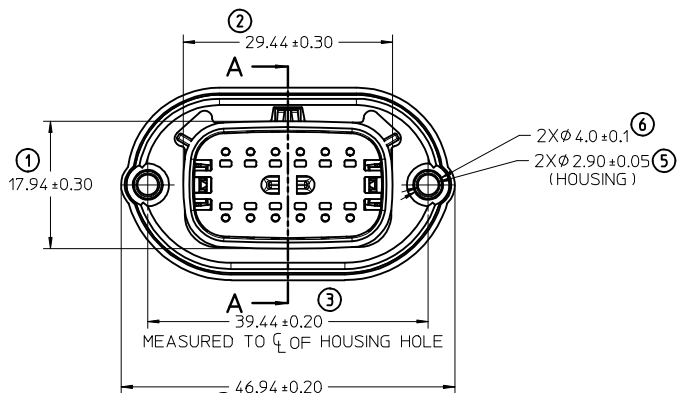
TRACEABILITY INFORMATION
LOCATION IN THIS AREA



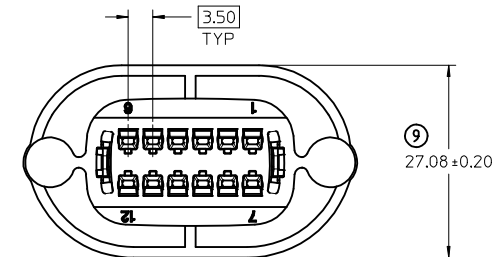
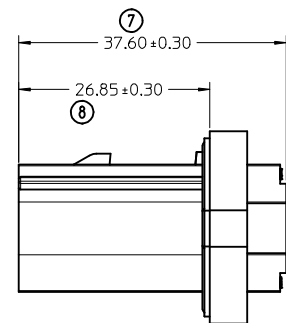
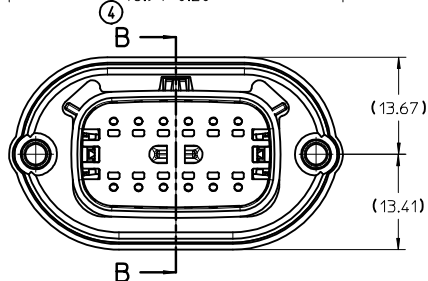
ASSY P/N	KEY OPTION	DESCRIPTION	COLOR
47725-2010	A	HOUSING	BLACK
		GASKET	BLACK
		TPA	NATURAL
47725-2030	C	HOUSING	DARK GRAY
		GASKET	BLACK
		TPA	NATURAL
47725-2040	D	HOUSING	STONE GRAY
		GASKET	BLACK
		TPA	NATURAL
47725-2110	A	HOUSING	BLACK
		GASKET	GREY
		TPA	NATURAL
47725-2130	C	HOUSING	DARK GRAY
		GASKET	GREY
		TPA	NATURAL
47725-2140	D	HOUSING	STONE GRAY
		GASKET	GREY
		TPA	NATURAL



SECTION A-A
(TPA SHOWN IN PRE-LOCK POSITION)
SEE NOTE 3



SECTION B-B
(TPA SHOWN IN FULL-LOCK POSITION)
FOR REFERENCE ONLY



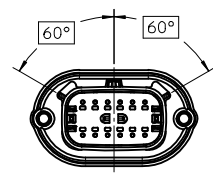
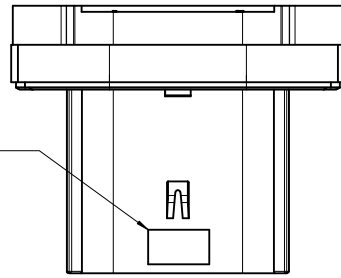
NOTES: UNLESS OTHERWISE SPECIFIED.

- SHALL CONFORM TO MOLEX PRODUCT SPECIFICATION: PS-47725-000
- USAGE OF THE PRODUCT SHALL BE IN COMPLIANCE TO MOLEX APPLICATION SPECIFICATION: AS-47725-001
- SHIPPED WITH GASKET AND TPA IN PRE-LOCK POSITION
- FOR ESSENTIAL PARTS (TERMINALS, WIRES ETC.) AND INSTALLATION TO COMPLETE ASSEMBLY SEE MOLEX PRODUCT SPECIFICATION: PS-33472-000.
- FOR TERMINAL SERVICING TOOL SEE MOLEX DOCUMENT: ATS-638131500, GM PART NUMBER J-38125-217
- DESIGNED TO MATE WITH 12 WAY RECEPTACLE CONNECTOR ASSEMBLY PER SD-33472-121. FOR MATING CONNECTOR ASSEMBLY INFORMATION SEE MOLEX PRODUCT SPECIFICATION: PS-33472-000

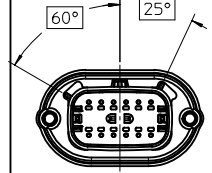
INSPECTION NUMBER LOG
LAST NUMBER USED: 9
ADDED:
REMOVED:

ENTER DESCRIPTION EC NO: GCAZ010-0088 DRAWN: CDZHANG 2010/03/18 CHKD: JLOHMAN 2010/03/18 APPR: GGLEE 2010/04/16	QUALITY SYMBOLS ∇=0 ∇=0 ∇=0	GENERAL TOLERANCES (UNLESS SPECIFIED)		DIMENSION STYLE MM ONLY		SCALE 2:1	DESIGN UNITS METRIC	THIRD ANGLE PROJECTION	
		4 PLACES ± --- ± --- 3 PLACES ± --- ± --- 2 PLACES ± --- ± --- 1 PLACE ± 0.1 ± --- ANGULAR ± 3°	mm INCH DRAWN BY CDZHANG DATE 2010/03/18 CHECKED BY JLOHMAN DATE 2010/03/18 APPROVED BY GGLEE DATE 2010/04/13	TITLE GENERAL MX150 2X6 PANEL MOUNT CONNECTOR		MATERIAL NO. SEE CHART DOCUMENT NO. SD-47725-210		MOLEX INCORPORATED	
DRAFT WHERE APPLICABLE MUST REMAIN WITHIN DIMENSIONS		THIS DRAWING CONTAINS INFORMATION THAT IS PROPRIETARY TO MOLEX INCORPORATED AND SHOULD NOT BE USED WITHOUT WRITTEN PERMISSION							

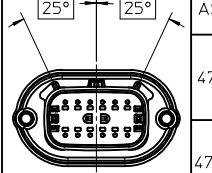
TRACEABILITY INFORMATION
LOCATION IN THIS AREA



KEY OPTION A
47725-2010
47725-2110

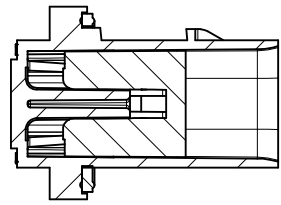


KEY OPTION C
47725-2030
47725-2130

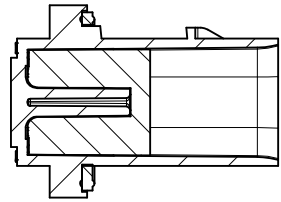
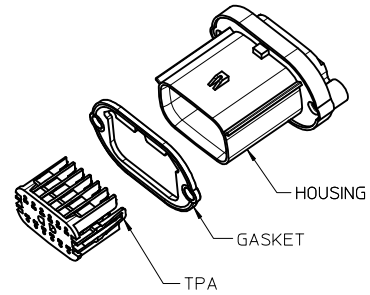
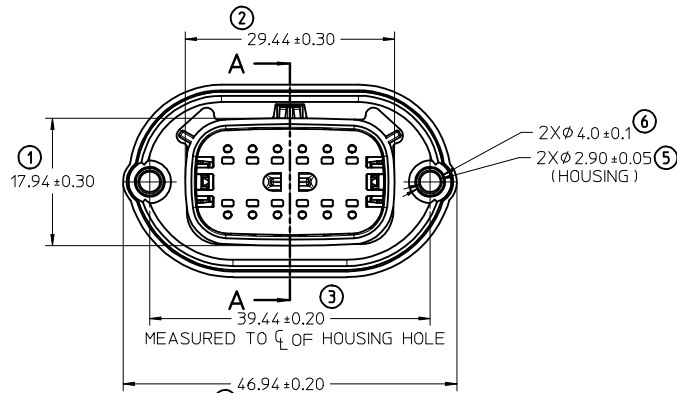


KEY OPTION D
47725-2040
47725-2140

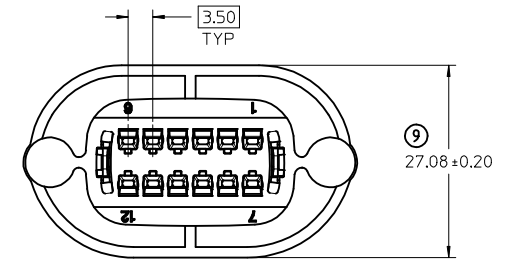
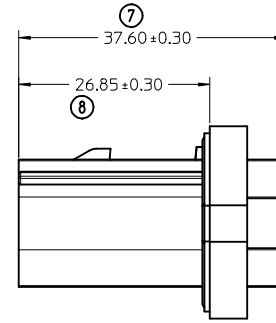
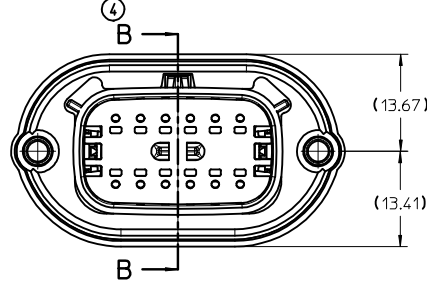
ASSY P/N	KEY OPTION	DESCRIPTION	COLOR
47725-2010	A	HOUSING	BLACK
		GASKET	BLACK
		TPA	NATURAL
47725-2030	C	HOUSING	DARK GRAY
		GASKET	BLACK
		TPA	NATURAL
47725-2040	D	HOUSING	STONE GRAY
		GASKET	BLACK
		TPA	NATURAL
47725-2110	A	HOUSING	BLACK
		GASKET	GREY
		TPA	NATURAL
47725-2130	C	HOUSING	DARK GRAY
		GASKET	GREY
		TPA	NATURAL
47725-2140	D	HOUSING	STONE GRAY
		GASKET	GREY
		TPA	NATURAL



SECTION A-A
(TPA SHOWN IN PRE-LOCK POSITION)
SEE NOTE 3



SECTION B-B
(TPA SHOWN IN FULL-LOCK POSITION)
FOR REFERENCE ONLY



NOTES: UNLESS OTHERWISE SPECIFIED.

- SHALL CONFORM TO MOLEX PRODUCT SPECIFICATION: PS-47725-000
- USAGE OF THE PRODUCT SHALL BE IN COMPLIANCE TO MOLEX APPLICATION SPECIFICATION: AS-47725-001
- SHIPPED WITH GASKET AND TPA IN PRE-LOCK POSITION
- FOR ESSENTIAL PARTS (TERMINALS, WIRES ETC.) AND INSTALLATION TO COMPLETE ASSEMBLY SEE MOLEX PRODUCT SPECIFICATION: PS-33472-000.
- FOR TERMINAL SERVICING TOOL SEE MOLEX DOCUMENT: ATS-638131500, GM PART NUMBER J-38125-217
- DESIGNED TO MATE WITH 12 WAY RECEPTACLE CONNECTOR ASSEMBLY PER SD-33472-121. FOR MATING CONNECTOR ASSEMBLY INFORMATION SEE MOLEX PRODUCT SPECIFICATION: PS-33472-000

INSPECTION NUMBER LOG
LAST NUMBER USED: 9
ADDED:
REMOVED:

ENTER DESCRIPTION EC NO: GCAZ010-0088 DRAWN: CDZHANG 2010/03/18 CHKD: JLOHMAN 2010/03/18 APPR: GGLEE 2010/04/16 REV: A	QUALITY SYMBOLS ∇=0 ∇=0 ∇=0	GENERAL TOLERANCES (UNLESS SPECIFIED)		DIMENSION STYLE MM ONLY		SCALE 2:1	DESIGN UNITS METRIC	THIRD ANGLE PROJECTION		
		mm INCH		DRAWN BY CDZHANG	DATE 2010/03/18	TITLE GENERAL MX150 2X6 PANEL MOUNT CONNECTOR				
		4 PLACES ± --- ± --- 3 PLACES ± --- ± --- 2 PLACES ± --- ± --- 1 PLACE ± 0.1 ± ---		CHECKED BY JLOHMAN	DATE 2010/03/18	MOLEX INCORPORATED				
		ANGULAR ± 3°		APPROVED BY GGLEE	DATE 2010/04/13	MATERIAL NO. SEE CHART		DOCUMENT NO. SD-47725-210	SHEET NO. 1 OF 1	

DRAFT WHERE APPLICABLE
MUST REMAIN
WITHIN DIMENSIONS

THIS DRAWING CONTAINS INFORMATION THAT IS PROPRIETARY TO MOLEX INCORPORATED AND SHOULD NOT BE USED WITHOUT WRITTEN PERMISSION