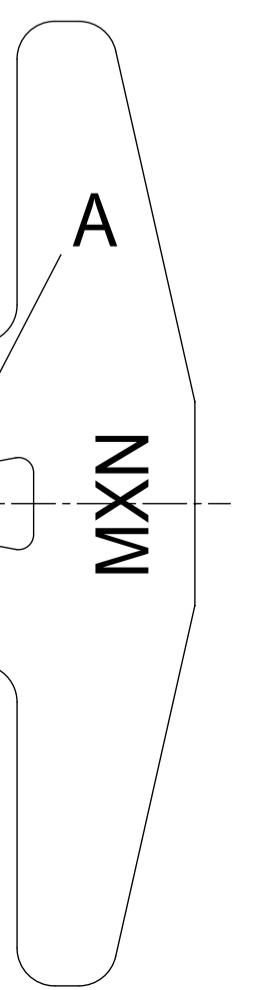


NOTE:  
- CRIMPING SPECIFICATION ACCORDING TO AS-64324-001

2	BOX TERMINAL	STAINLESS STEEL thickness : 0.15 mm
1	BODY TERMINAL	HIGH CONDUCTIVITY COPPER ALLOY thickness : 0.35 mm
MARK	DESIGNATION	MATERIAL

MATERIAL NUMBER	CONTACT AREA	CRIMPING AREA	UNDERLAYER	CRIMPING RANGE (mm <sup>2</sup> )	A ±0.2	B	Rc ±0.1	G ±0.05	D ±0.1	P1 ±0.1	P2 ±0.1	WEIGHT (g)	Identification
0643241119	Au 1.27μ MINI	Sn	Ni	>3 TO 5	5.0	5.2	1.3	0.8	1.55	0.5	0.95	0.4902	D
0643241019	Sn	Sn	Ni	>3 TO 5	5.0	5.2	1.3	0.8	1.55	0.5	0.95	0.4795	D
0643241129	Au 1.27μ MINI	Sn	Ni	>2 TO 3	4.1	4.4	1.0	0.8	1.45	0.5	0.95	0.4604	C
0643241029	Sn	Sn	Ni	>2 TO 3	4.1	4.4	1.0	0.8	1.45	0.5	0.95	0.4470	C
0643241139	Au 1.27μ MINI	Sn	Ni	>1 TO 2	4.1	3.5	0.9	0.8	1.3	0.6	1.3	0.4274	B
0643241039	Sn	Sn	Ni	>1 TO 2	4.1	3.5	0.9	0.8	1.3	0.6	1.3	0.4191	B
0643241149	Au 1.27μ MINI	Sn	Ni	0.50 TO 1	2.8	2.6	0.7	1.15	1.1	0.6	1.3	0.3916	A
0643241049	Sn	Sn	Ni	0.50 TO 1	2.8	2.6	0.7	1.15	1.1	0.6	1.3	0.3815	A

crimping range identification



(SKC) COTES CARACTERISTIQUES SPECIALES  
SPECIAL KEY CHARACTERISTICS

INDICATION DIMENSIONS S.P.C  
DENOTES S.P.C DIMENSIONS

INDICATION DIMENSIONS CRITIQUES  
DENOTES CRITICAL DIMENSIONS

INDICATION DIMENSIONS FONCTIONNELLES  
DENOTES FUNCTIONAL DIMENSIONS

QUANTITE PAR FEUILLE INDIVIDUELLE  
QUANTITY PER INDIVIDUAL SHEET

2 0 6 (SKC) 0

THIS DRAWING CONTAINS INFORMATION THAT IS PROPRIETARY TO MOLEX ELECTRONIC TECHNOLOGIES, LLC AND SHOULD NOT BE USED WITHOUT WRITTEN PERMISSION

DIMENSION UNITS: mm SCALE: 10:1

GENERAL TOLERANCES (UNLESS SPECIFIED):

ANGULAR TOL ± 2.0°

4 PLACES ± 0.1

3 PLACES ± 0.1

2 PLACES ± 0.1

1 PLACE ± 0.1

0 PLACES ±

DRAFT WHERE APPLICABLE MUST REMAIN WITHIN DIMENSIONS

FIRST ANGLE PROJECTION

DRAWING: A1-SIZE

SERIES: 64324

CURRENT REV DESC: NX RE-MASTERING.  
CHANGED ENGINEERING CONTROL ID FROM MXG TO MXN.

EC NO: 607772

DRWN: GMANIVANNAN 2018/04/05

CHK'D: TBADAROUX 2018/11/21

APPR: SLAFAURE 2018/11/26

INITIAL REVISION:

DRWN: VGUERIN 2007/11/07

APPR: LSTICKER 2007/11/07

**molex**

CP RCPT TRM 2.8

PRODUCT CUSTOMER DRAWING

DOCUMENT NUMBER: SD-64324-001

DOC TYPE: PSD

DOC PART: 001

REVISION: D1

MATERIAL NUMBER: SEE CHART

CUSTOMER: GENERAL MARKET

SHEET NUMBER: 1 OF 1