

View on mating side

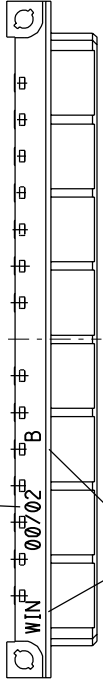
o	C	C	C	C	C	C	C	C	C	C	C	C	C	C	C	C	C	C	C	C	C	C	C
a	B	B	B	B	B	B	B	B	B	B	B	B	B	B	B	B	B	B	B	B	B	B	B
o	A	A	A	A	A	A	A	A	A	A	A	A	A	A	A	A	A	A	A	A	A	A	

N O Q R S T U V W X Y Z [\] ^ _ ` a b c d e f g h i j k l m n o p q r s t u v w x y z

- A = 32 contacts L=2,8
- B = 32 contacts L=2,8
- C = 32 contacts L=2,8

S = 96 total number of contacts

year / week (only for example)



Marking	Customer special
Performance level	G2/0 = Contact area level2 / Termination tin
Flux proof	no
Fixing clip	no
Dimensions	SDA-85052-0001 sht.1
Technical Data	PS-85052-0001

C	G2/0	c1-32
B	G2/0	b1-32
A	G2/0	a1-32
Contact symbol	Perform. level	Contact position number

Contact position number

ECN No. MG2001-0440		01/03/30 Ca		LTR	
Printing changed		REVISIONS		FOR PREVIOUS REVISIONS SEE MRI LIST	
UNLESS OTHERWISE SPECIFIED, TOLERANCES: ANGULAR ±2°		DRWG BY	SIGN	REV. REV.	
INCH		KN	KN	THIS DRAWING CONTAINS INFORMATION THAT IS PROPRIETARY TO MOLEX INC. & SHOULD NOT BE USED WITHOUT WRITTEN PERMISSION	
METRIC		CHK'D BY	SIGN	SH. SH.	
3 PLACE ± •		Ca	Ca	DATE	
2 PLACE ± •		APP'D BY	SIGN	SHEET NO.	
1 PLACE ± •		JB	JB	1 OF 1	
DRAFT WHERE APPLICABLE MUST REMAIN WITHIN DIMENSIONS		SCALE		DATE	
DESIGN DIMENSION <input type="checkbox"/> MM <input type="checkbox"/> IN.				96/12/06	
EQUIVALENT DIMENSION <input type="checkbox"/> MM <input type="checkbox"/> IN.				DWG NO.	
IF TWO DIMENSIONS ARE SHOWN THE UPPER IS THE DESIGN DIMENSION LOWER IS SECONDARY				SDA-85052-0323	
				SIZE	
				A	

REVISE ONLY ON CAD SYSTEM		SH. REV.	
CAD/CAM PROJECT NAME		THIS DRAWING CONTAINS INFORMATION THAT IS PROPRIETARY TO MOLEX INC. & SHOULD NOT BE USED WITHOUT WRITTEN PERMISSION	
TITLE		96 pos. female connector acc. DIN 41612 style R contacts arrangement	
molex		MOLEX EUROPE	
PART NO.		85052-0323	
DWG NO.		SDA-85052-0323	
SIZE		A	