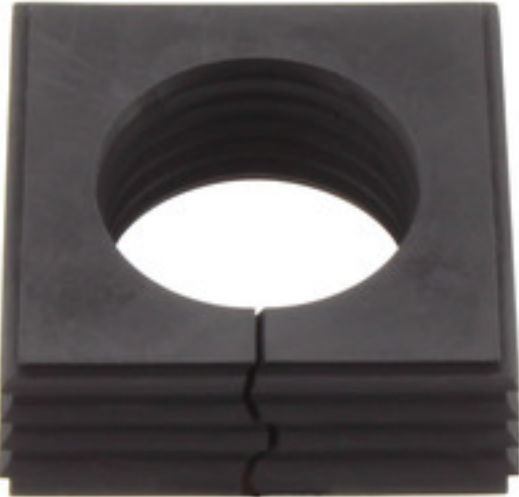


## Cabtite (cable entry system) CABTITE SE 27-28 LRG BK

**Weidmüller Interface GmbH & Co. KG**  
Klingenbergstraße 26  
D-32758 Detmold  
Germany  
Fon: +49 5231 14-0  
Fax: +49 5231 14-292083  
www.weidmueller.com



Whether a large or small cable diameter – Cabtite always offers the right seal insert.

The conical shape of the sealing elements allows the previously positioned snap-in grid inlays to be pushed in easily from the inside to the outside, it reliably seals intermediate spaces and provides strain relief in accordance with DIN EN 62444. The seal inserts combined with the frames achieve an IP 66 degree of protection. As a result of its slotted design with wave cut, it is especially suitable for pre-assembled cables.

- The black seal inserts are designed for a particularly high operating temperature and offer fire safety class UL 94 HB
- The grey sealing elements comply with fire safety class UL 94 V0 and are therefore suitable for the demands of the railway industry
- By using multiple inserts, two or more cables, as well as special cables, can be passed through a sealing element

### General ordering data

|            |  |
|------------|--|
| Type       | CABTITE SE 27-28 LRG BK  |
| Order No.  | <a href="#">2583680000</a>   |
| Version    | Sealing element, Cabtite (cable entry system), TPE, Deep black, Height: 42.8 mm, Width: 42.8 mm, Depth: 17.7 mm, -40 °C...120 °C, IP54, IP65, IP66 |
| GTIN (EAN) | 4050118617221  |
| Qty.       | 10 pc(s).  |

**Data sheet**

**Cabtite (cable entry system)  
CABTITE SE 27-28 LRG BK**

**Weidmüller Interface GmbH & Co. KG**  
Klingenbergstraße 26  
D-32758 Detmold  
Germany  
Fon: +49 5231 14-0  
Fax: +49 5231 14-292083  
www.weidmueller.com

**Technical data**

**Dimensions and weights**

|            |         |                 |            |
|------------|---------|-----------------|------------|
| Width      | 42.8 mm | Width (inches)  | 1.685 inch |
| Height     | 42.8 mm | Height (inches) | 1.685 inch |
| Depth      | 17.7 mm | Depth (inches)  | 0.697 inch |
| Net weight | 21.4 g  |                 |            |

**General information**

|                            |       |                            |                         |
|----------------------------|-------|----------------------------|-------------------------|
| UL 94 flammability rating  | HB    | Sealing element            | 1 large sealing element |
| Outer cable diameter, min. | 27 mm | Outer cable diameter, max. | 28 mm                   |
| Halogen                    | No    | Silicone                   | No                      |
| Material                   | TPE   |                            |                         |

**Classifications**

|             |             |            |             |
|-------------|-------------|------------|-------------|
| ETIM 6.0    | EC000879    | ETIM 7.0   | EC000879    |
| eClass 9.0  | 27-14-44-21 | eClass 9.1 | 27-14-44-21 |
| eClass 10.0 | 27-14-44-21 |            |             |

**Approvals**

Approvals



ROHS Conform

**Downloads**

|                    |   |
|--------------------|---|
| Engineering Data   | <a href="#">EPLAN</a>                             |
| Engineering Data   | <a href="#">STEP</a>                              |
| User Documentation | <a href="#">Cabtite Installation Instructions</a> |