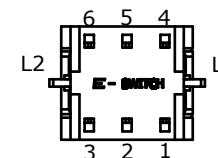
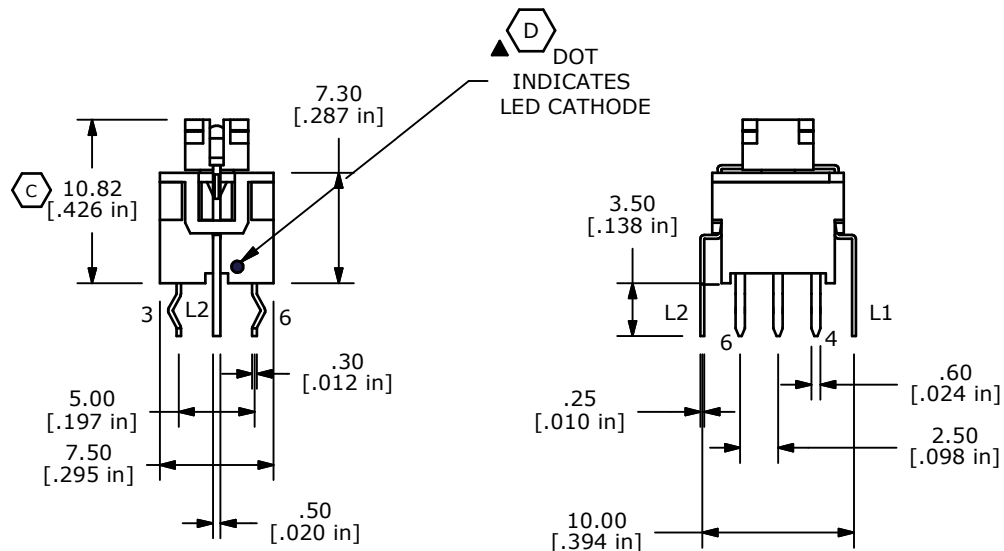
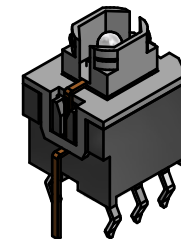
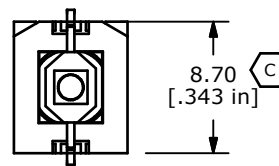


- NOTES:
1. ALL DIMENSIONS IN MM [INCH]
 2. GENERAL TOLERANCE: X.X=±0.4
X.XX=±0.25
 3. TERMINAL NUMBERS FOR REF ONLY
 4. CONTACT RATING: CURRENT: 100mA
VOLTAGE: 30 VDC
 5. OPERATING LIFE: 50,000 MAKE-AND-BREAK CYCLES
 6. INSULATION RESISTANCE: 500VDC, 100M OHM. MIN.
 7. OPERATING FORCE: 250gf ± 100 GRAMS
 8. OPERATING TEMP.: -20°C to 70°C
 - ▲ 9. TRAVEL: 1.00 ± 0.3mm LOCK
1.50 ± 0.3mm FULL TRAVEL
 10. CONTACT RESISTANCE: 50 m OHM. MAX.
 11. ▲ DENOTES CRITICAL PARAMETER.
 12. 2002/95/EC (ROHS) COMPLIANT
 - ▲ 13. LED COLOR: RED



| LED SPECS | UNITS | RED |
|---------------------------|-------|---------|
| FORWARD CURRENT | mA | 20 |
| FORWARD VOLTAGE @20mA | V | 1.9-2.5 |
| LUMINOUS INTENSITY @ 10mA | MCD | 200 |

| REV | PCR NO | DESCRIPTION | DATE | BY |
|-----|--------|----------------------------------|----------|-----|
| D | 20993 | REMOVE "WHITE" FROM LED DOT NOTE | 1/30/13 | EBP |
| C | 19601 | DRAWING UPDATE | 1/19/11 | BGL |
| B | 18414 | PCB LAYOUT SECTION FIXED | 2/19/09 | BLR |
| A | 18316 | New Release | 11/13/08 | rc |



| | | | | |
|-------------------|-----------|----|---------|-----|
| TITLE LP4EE1PBNNR | | | | |
| SCALE | DATE | DR | DWG | REV |
| 2:1 | 2/19/2009 | rc | B240000 | D |

THE INFORMATION CONTAINED IN THIS DOCUMENT IS PROPRIETARY TO E-SWITCH AND IS NOT TO BE COPIED OR TRANSFERRED