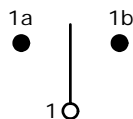


RECOMMENDED PANEL MOUNTING

PANEL THICKNESS	X
0.75-1.25	19.20-19.30
1.25-2.00	19.30-19.40
2.00-3.00	19.50-19.60

SWITCH FUNCTION		
POS. 1	POS. 2	POS. 3
(ON)	OFF	(ON)
(1a-1)	OPEN	(1-1b)

MOMENTARY=(ON)

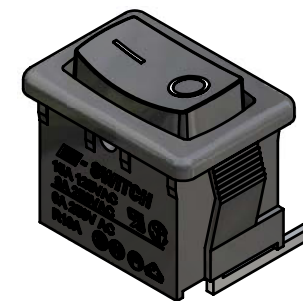
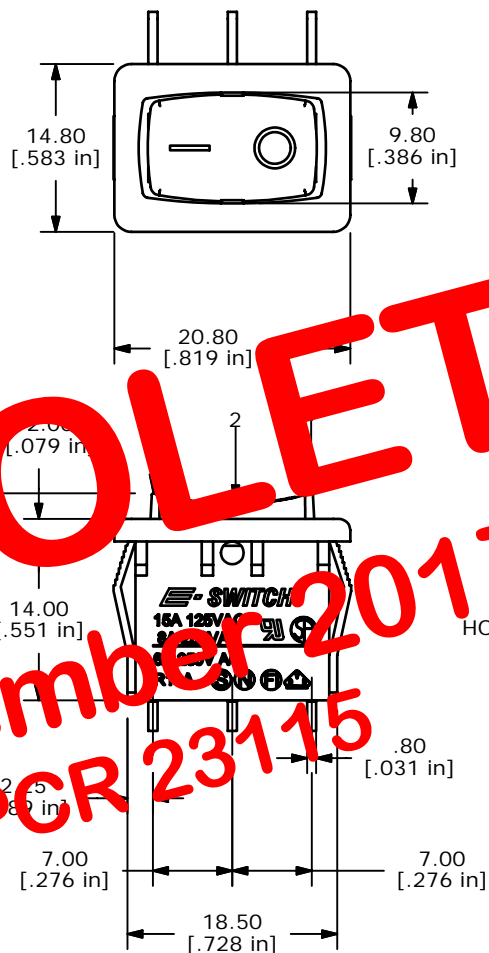


CURCUIT: SPDT

NOTES:

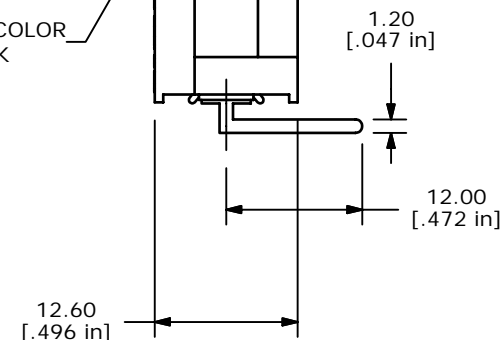
- ALL DIMENSIONS IN MM [INCH]
- GENERAL TOLERANCE: X.X=±0.4
X.XX=±0.25
- TERM. NOS. FOR REF. ONLY
- RATING: 15A @125VAC;
8A @250VAC.
- ▲ LAMP VOLTAGE: NO LAMP
- MATERIAL:
CONTACT SURFACE: SILVER ALLOY
TERMINAL: COPPER ALLOY w/SILVER PLATE
- ELECTRICAL LIFE: 10,000 CYCLES
- CONTACT RESISTANCE: <20 MILLI-OHMS INITIAL
- DIELECTRIC STRENGTH: >1,500V AC 1 MIN
- ▲ DENOTES CRITICAL PARAMETER.

OBSOLETE
 November 2017
 PCR 23115



BLACK
ADJUSTOR

HOUSING COLOR
BLACK



E-SWITCH®

REV	PCR NO	DESCRIPTION	DATE	BY
B	15558	ADD POSITION NUMBERS,EDIT CIRCUIT	11/22/05	PH
A	15534	RELEASED FOR PRODUCTION	11/16/05	PH

TITLE R1966IBLKBLKFR				
SCALE	DATE	DR	DWG	REV
1.5:1	11/16/2005	PH	M302426	B

THE INFORMATION CONTAINED IN THIS DOCUMENT IS PROPRIETARY TO E-SWITCH AND IS NOT TO BE COPIED OR TRANSFERRED