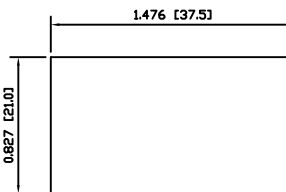
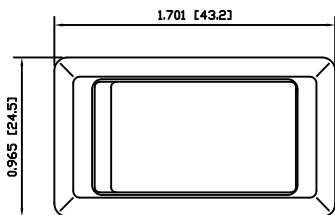


SUGGESTED PANEL CUTOUT



MATERIALS

- BODY:
Polyamide 6/6 (PA66), UL94 V-2
- ACTUATOR:
Polyamide 6/6 (PA66), UL94 V-2
- SEALING MEMBRANE:
Polyvinyl Chloride (PVC)
- SPRING:
Plano Wire
- MOBILE CONTACT BAR:
Copper
- CONTACT PADS:
Silver Clad Copper
- RIVETS:
Copper
- TERMINALS:
Brass

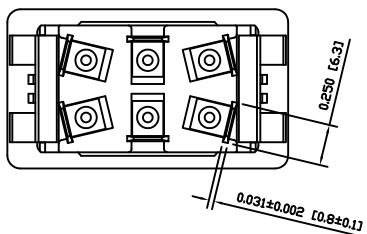
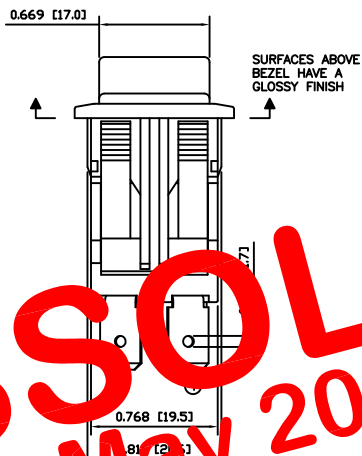
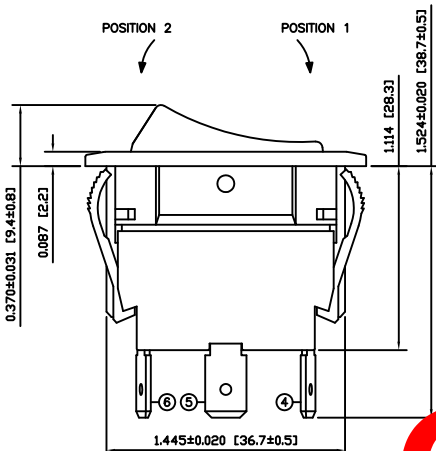
SPECIFICATIONS

- FUNCTION:
2P2T ON-ON
- RATINGS:
ANSI/UL 508 and CAN/CSA C22.2 No.14 (E195908):
20A 125VAC [cURus]
15A 277VAC [cURus]
2HP 110/250VAC [cURus]
- CONTACT RESISTANCE:
Initial: 10mΩ Max.
- ELECTRICAL LIFE:
6,000 Cycles [cURus]
- TEMPERATURE:
Operating: 0°C to 40°C [cURus]
- INGRESS PROTECTION:
IP54
- APPROVALS:
 RoHS COMPLIANT

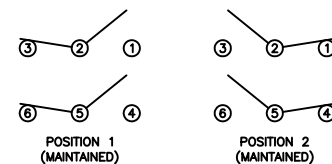
COLORS AND MARKINGS

- BODY COLOR:
Black
- ACTUATOR COLOR:
White
- MARKING:
None
- MARKING COLOR:
None

OBSOLETE
May 2017
PCR 22508



SCHEMATIC



ACTUATOR	B	10/05/26	CAB
BODY	B	10/05/26	CAB
COLORS	A	09/07/28	CAB
MATERIALS	C	10/03/01	CAB
SPECIFICATIONS	C	10/03/01	CAB
REFERENCE	REV.	DATE	BY

THE INFORMATION CONTAINED IN THIS DOCUMENT IS PROPRIETARY TO E-SWITCH AND IS NOT TO BE COPIED OR TRANSFERRED

B	CORRECTED SPECIFICATIONS	PCR00247	09/12/09	CAB
A	INITIAL RELEASE	PCR00050	09/07/28	CAB
REV.	DESCRIPTION	PCR	DATE	DRAWN BY

DIMENSIONS	
INCHES [MILLIMETERS]	
GENERAL TOLERANCES	
±0.008 [±0.2] / ±1'	
SCALE	PROJECTION
DRAWING NOT TO SCALE	

RWVG4GD1200		
DRAWING NUMBER	DATE	REVISION
34-RWVG4GD1200	DECEMBER 9, 2009	B