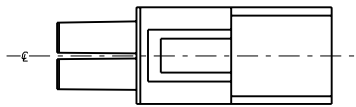
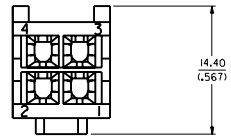
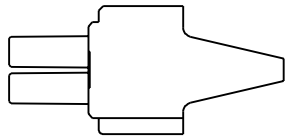
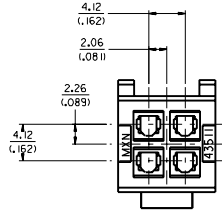
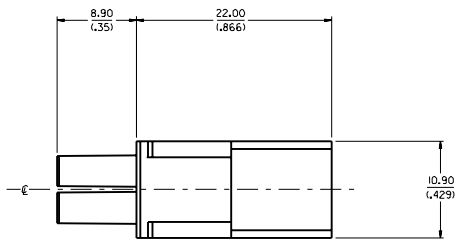


NOTES:

1. MATERIAL: POLYESTER (PBT), UN-FILLED, UL 94V-0. COLOR: BLACK
2. FINISH: NONE
3. PRODUCT SPEC. : PS-43510-002
4. ALL DIMENSIONS SHOWN FOR REFERENCE ONLY.
5. USES STANDARD 5556 AND 44485 MINI-FIT JR. FEMALE CRIMP TERMINALS.
6. PART MATES WITH 43514-0001 PLUG PDD.
7. PART TO BE USED WITH 43838-0*** RECEPTACLE SHROUD.
(SEE SHROUD DRAWING FOR ASSEMBLY INFORMATION)



ADDED LEAD-INS EC NO. UCR 1999-0594 DRW/POL/GAR 99/03/11 CPM/COM/ERC 99/03/15 APPR/COM/ERC 99/02/15	QUALITY SYMBOLS MAJOR ∇ 0 CRITICAL ∇ 0	GENERAL TOLERANCES: (UNLESS SPECIFIED) mm INCH 4 PLACES ± 0.15 ± 0.004 3 PLACES ± 0.10 ± 0.003 2 PLACES ± 0.08 ± 0.002 1 PLACE ± 0.05 ± 0.001	SCALE 4: 1 DESIGN UNITS <input checked="" type="checkbox"/> mm <input type="checkbox"/> INCH	DRAWN BY & DATE COMERC I 97/10/06 CHECKED BY & DATE COMERC I 97/10/06 APPROVED BY & DATE FRY 97/10/10	DIMENSIONS: <input checked="" type="checkbox"/> mm <input type="checkbox"/> INCH <input type="checkbox"/> mm <input type="checkbox"/> INCH <input type="checkbox"/> mm ONLY	SHT 1 REV
	CAD FILENAME S4351101.DGN	MATERIAL NO. 43511-0001	DRAWING NO. SD-43511-001	SHEET NO. 1 OF 1		
	DRAFT WHERE APPLICABLE MUST REMAIN WITHIN DIMENSIONS				THIS DRAWING CONTAINS INFORMATION THAT IS PROPRIETARY TO MOLEX INCORPORATED AND SHOULD NOT BE USED WITHOUT WRITTEN PERMISSION.	
	REV A	DESCRIPTION	TITLE: MINI FIT JR. RECEPTACLE, 4 CIRCUIT, DUAL ROW COMPODRE SYSTEM MOLEX INCORPORATED			