

REV. PA1	SHEET 1 OF 3	DOCUMENT NO. 10-504637-012
REVISIONS		
LTR	DESCRIPTION	DATE
PA1	INITIAL RELEASE	4/3/18

10-504637-012

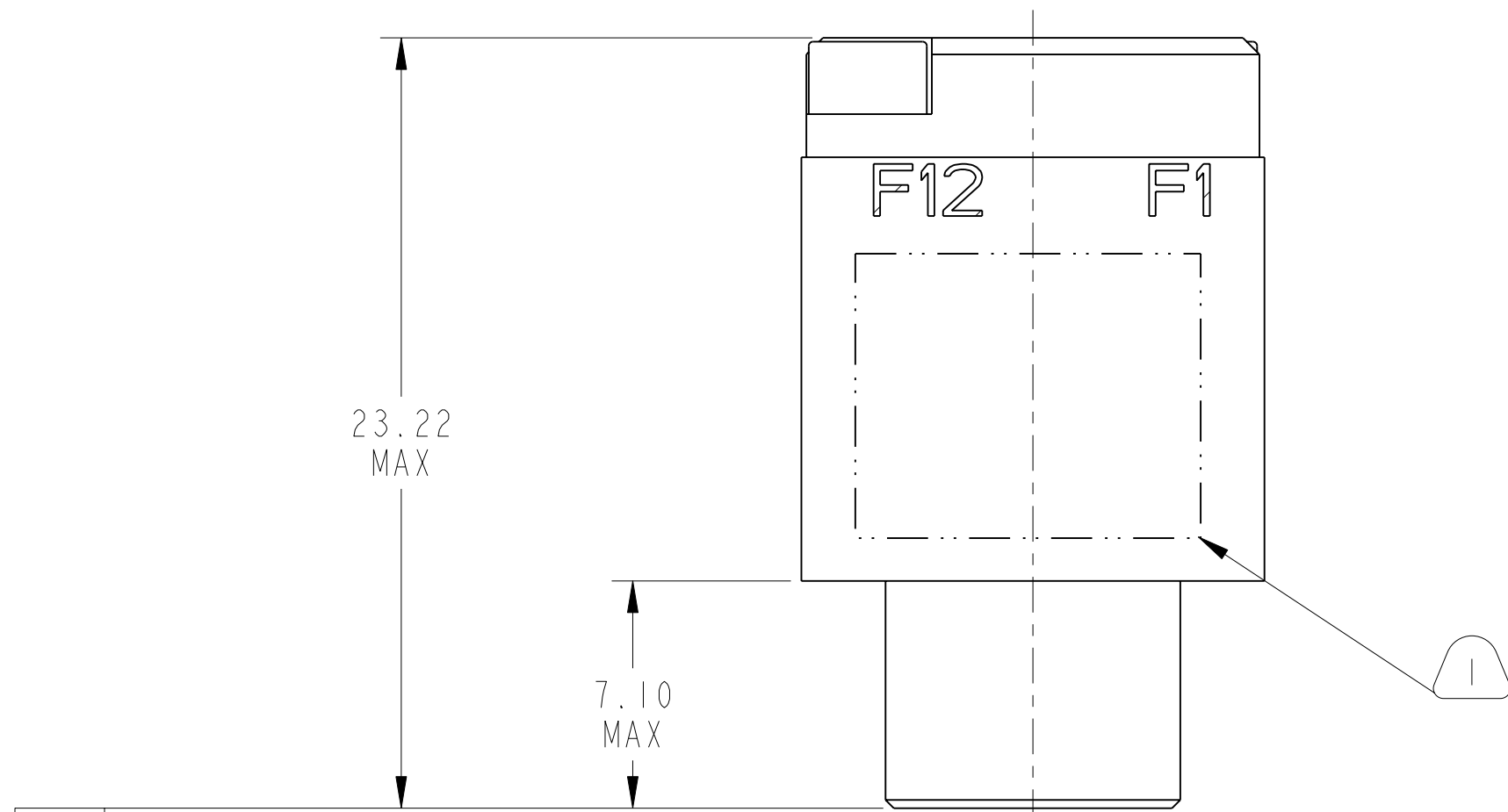
SHEET 1 OF 3

REV. PA1

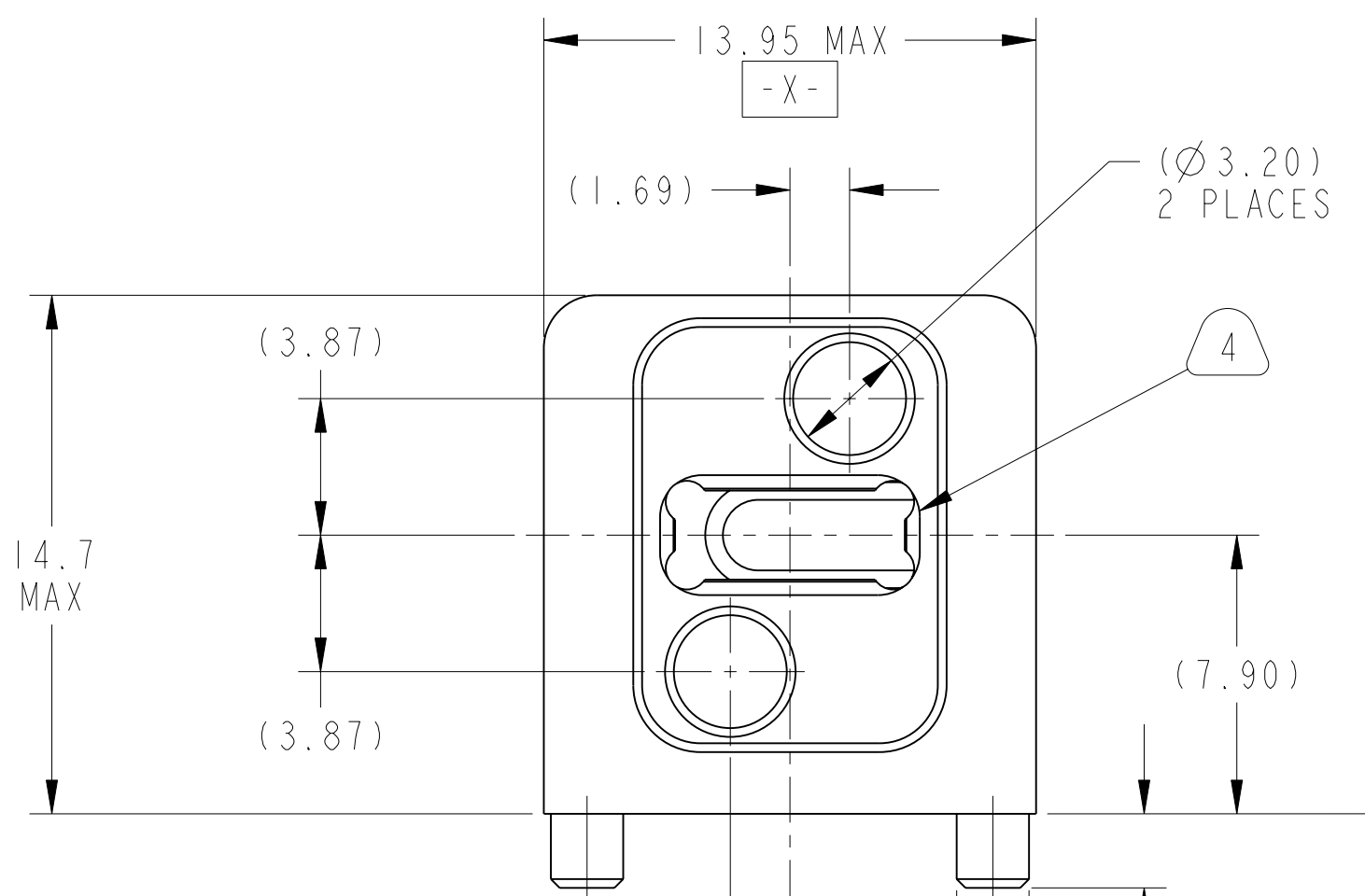
C

B

A

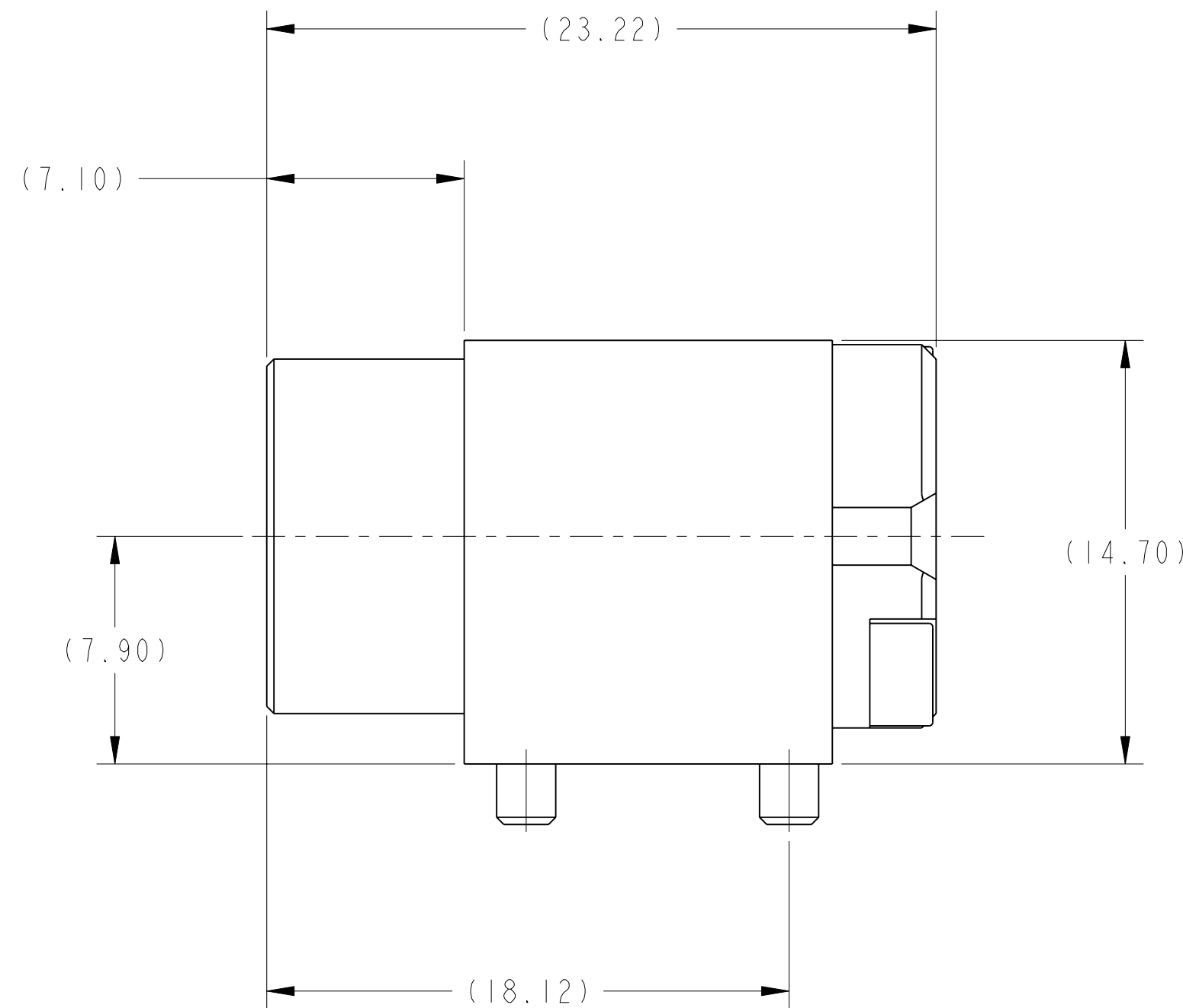


-Y-



-X-

-Z-



C

C

### METRIC DRAWING

SEE SHEET 2

#### NOTES:

THE USE OF THIS DOCUMENT IS UNLIMITED. HOWEVER, DOCUMENTS REFERENCED HEREON MAY CONTAIN LIMITED RIGHTS DATA.

⊕	⊙0.05(M)	Y	Z	X(S)
---	----------	---	---	------

SCALE 5.000

UNLESS OTHERWISE SPECIFIED	SPECIFICATIONS	POS	QTY	PART NUMBER	DESCRIPTION	NOTE
LINEAR DIMENSIONS ARE IN MILLIMETERS TOLERANCES: .XXXX = ±NA ANGLES= ±2° .XXX = ±NA .XX = ±.13 .X = ±.25 DIM. & TOL. PER ASME Y14.5M; DRM PER MIL-DTL-31000; OTHER Amphenol Sds. PER 9-3800 LEGENDS: =FLAG NOTE CALL OUT REFERENCE ONLY	MATERIAL SPEC.	APPROVALS		DATE	PARTS LIST	
	NONE	PREPARED BY R. CHAPMAN	ENGINEER IN CHARGE E. HICKEY	03-Apr-18	<b>AMPHENOL CORPORATION</b> 40-60 DELAWARE AVENUE SIDNEY, N.Y. 13838 <b>CONNECTOR, FIBER OPTIC, MODULE,            1 MT SPECIAL            (VITA 66.4 ENVELOPE)</b>	
PROCESS SPEC.	9-3895	DESIGN MANAGER R. SELFRIDGE		BLP	SIZE <b>C</b> CAGE CODE <b>77820</b> DOCUMENT NO. <b>10-504637-012</b> REV. <b>PA1</b> SCALE: 3.0 REF: 10-504637-008 SHEET 1 OF 3	

NONE	PRO/ENGINEER INFORMATION
NEXT ASSEMBLY	Pro/e Model Used: 10-504637-012.DWG.ASSEM Drawing Name: 10-504637-012

10-504637-012

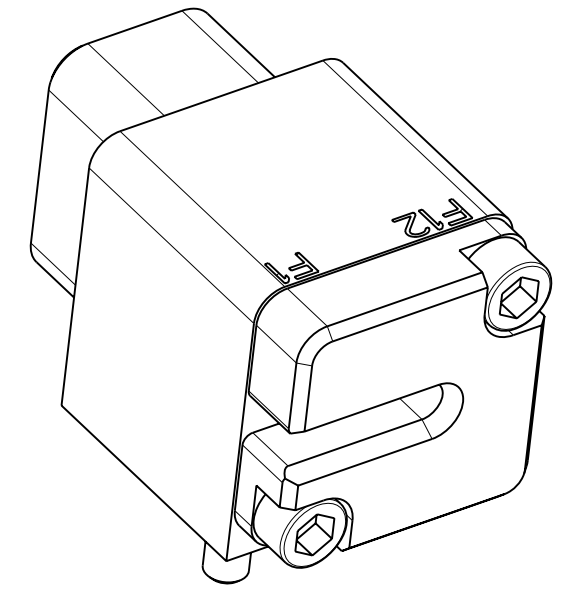
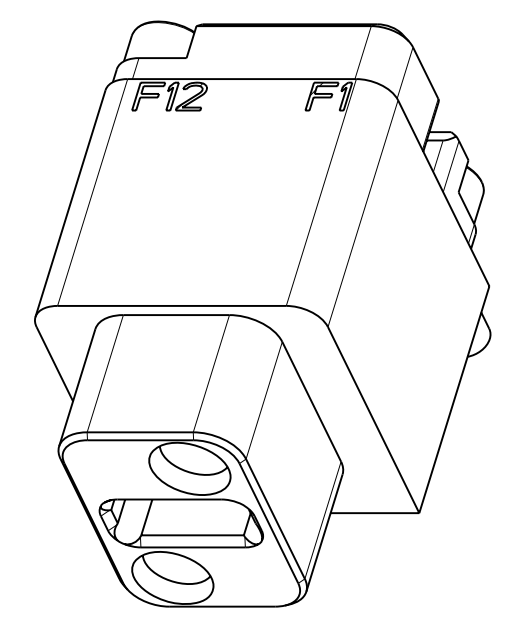
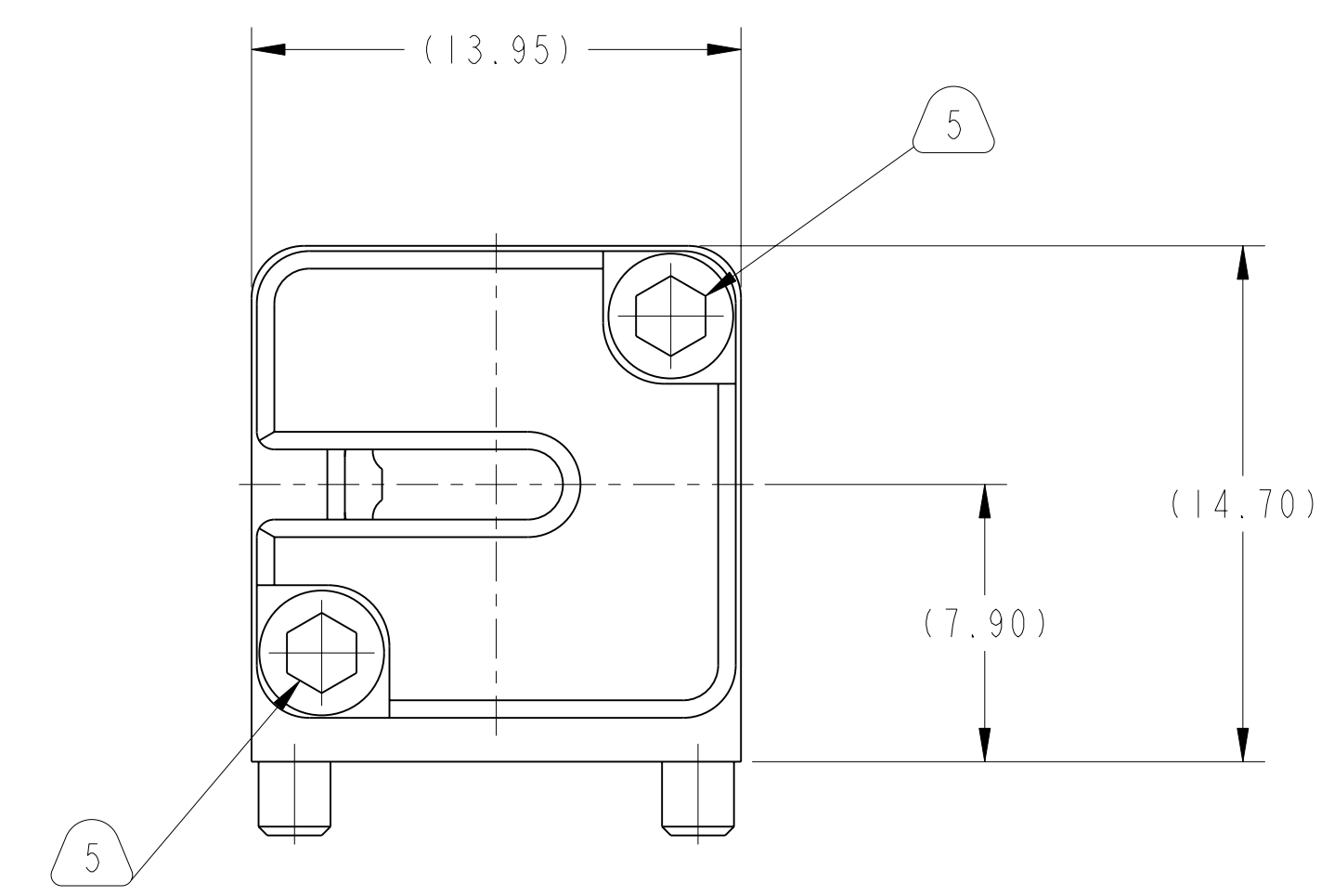
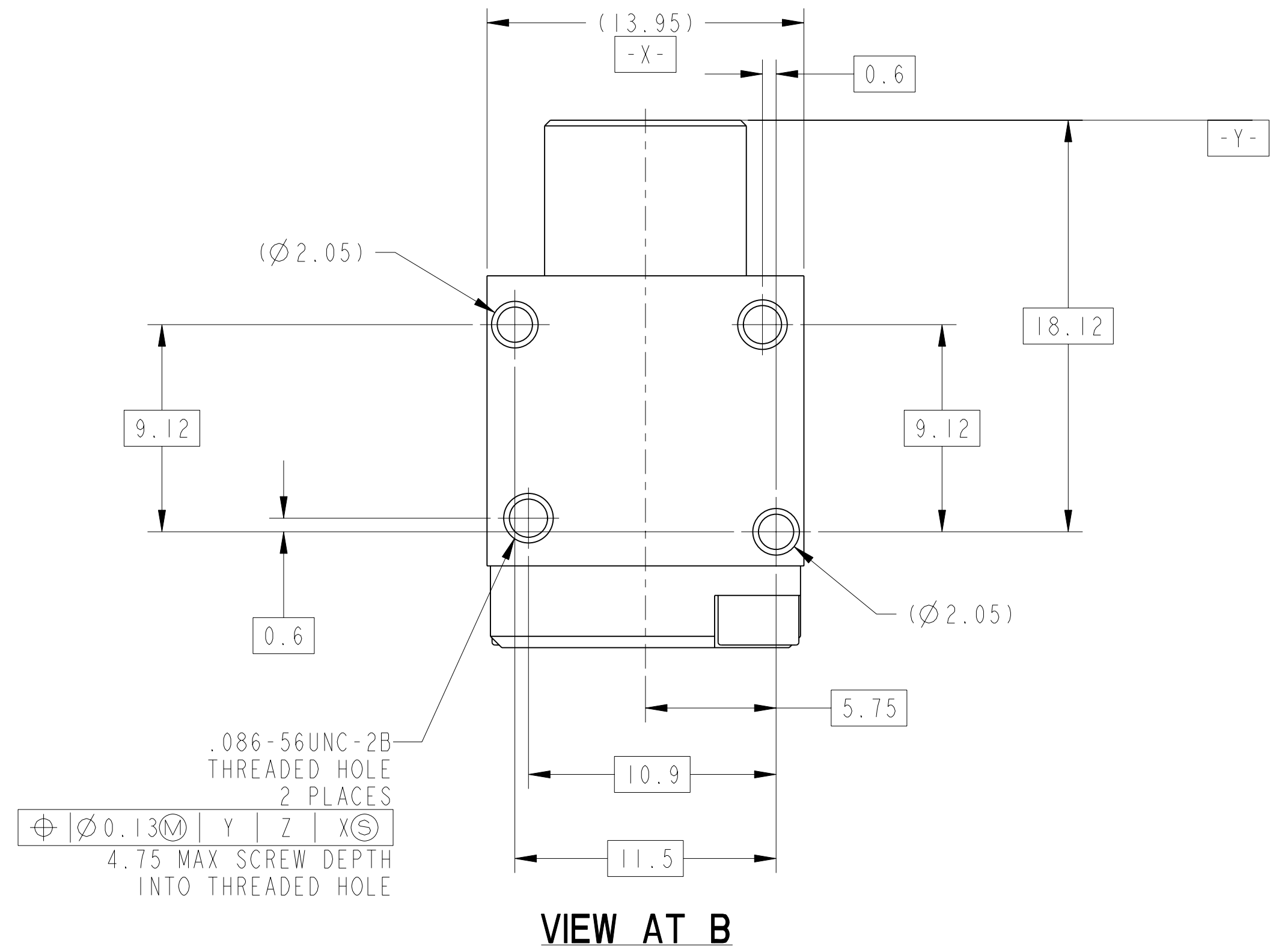
SHEET 1 OF 3

REV. PA1

A

U

10-504637-012  
 SHEET 2 OF 3  
 REV. PA1



5. RETAINER SCREWS TO BE TIGHTENED TO A TORQUE OF 2 -3 IN-LBS. RETAINER SHOULD BE BOTTOMED ON CONNECTOR BODY.
4. INSERT CAVITY IS FOR A FIBER OPTIC MT FERRULE PER IEC 61754-5 MT FERRULES AND ASSOCIATED RIBBON CABLE ARE NOT PART OF THIS ASSEMBLY.
3. FOR CONNECTOR INSTALLATION ILLUSTRATION SEE SHEET 3.
2. FOR MATING BACKPLANE CONNECTOR ASSEMBLY, SEE DRAWING 10-504639-010.
1. BLACK INK STAMP "AMPH 77820" PART NUMBER AND DATE CODE ON INDICATED SURFACE PER 9-3856-5. DATE CODE PER 9-3895. CHARACTERS TO BE 1.6±.51 (.062±.005 INCH). HIGH. ADDITIONAL INFORMATION MAY BE REQUESTED BY PURCHASE ORDER. STAMPING CAN BE ON BOTH SIDES OF PART.

**MATERIALS AND FINISHES**

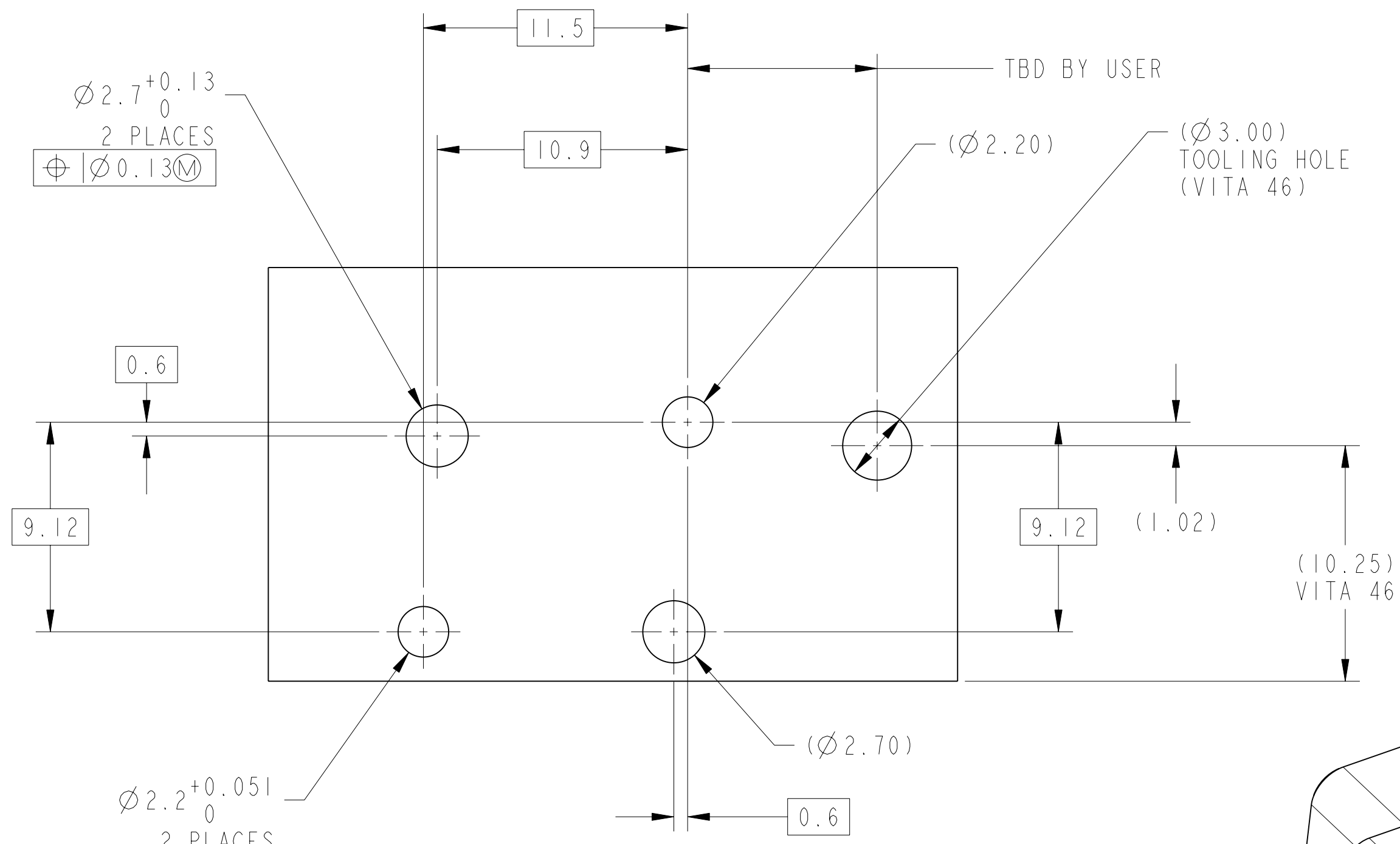
COMPONENT	MATERIAL/ FINISH
MAIN BODY	BODY - MATERIAL - ALUM. ALLOY PER AMS 4150 FINISH - CHROMATE TREATMENT PER MIL-C-5541, CL 3 HELICAL INSERTS - STAINLESS STEEL 304 SERIES PASSIVATED
MT RETAINER	BODY - MATERIAL - ALUM. ALLOY PER AMS 4150 FINISH - CHROMATE TREATMENT PER MIL-C-5541, CL 3 SCREW - STAINLESS STEEL 300 SERIES PASSIVATED

THE USE OF THIS DOCUMENT IS UNLIMITED.  
 HOWEVER, DOCUMENTS REFERENCED HEREON  
 MAY CONTAIN LIMITED RIGHTS DATA.

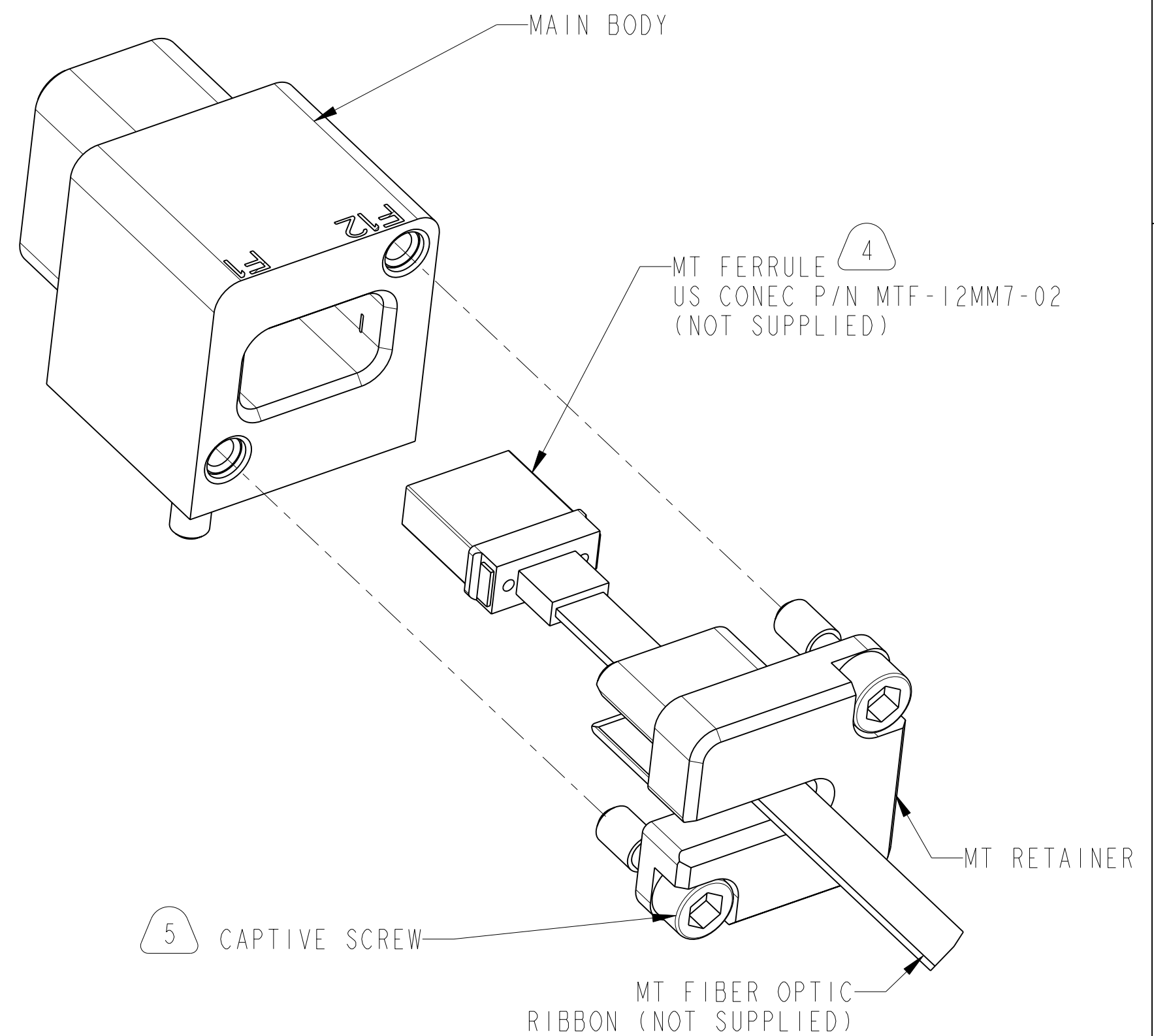
SIZE <b>C</b>	CAGE CODE <b>77820</b>	DOCUMENT NO. <b>10-504637-012</b>	REV. <b>PA1</b>
SCALE: 3.0	REF. 10-504637-008	SHEET 2 OF 3	

10-504637-012  
 SHEET 2 OF 3  
 REV. PA1

10-504637-012 SHEET 3 OF 3 PA1



**SUGGESTED MODULE PCB  
INTERFACE DIMENSIONS**  
SCALE 5.000



**REAR EXPLODED  
ASSEMBLY VIEW**  
SCALE 4.000

THE USE OF THIS DOCUMENT IS UNLIMITED.  
HOWEVER, DOCUMENTS REFERENCED HEREON  
MAY CONTAIN LIMITED RIGHTS DATA.

SIZE <b>C</b>	CAGE CODE <b>77820</b>	DOCUMENT NO. <b>10-504637-012</b>	REV. <b>PA1</b>
SCALE: 3.0	REF. 10-504637-008	SHEET 3 OF 3	