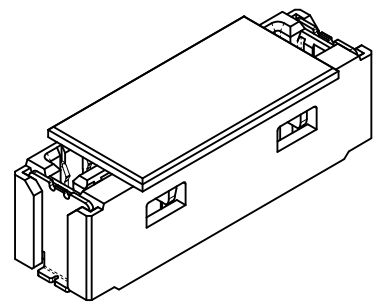
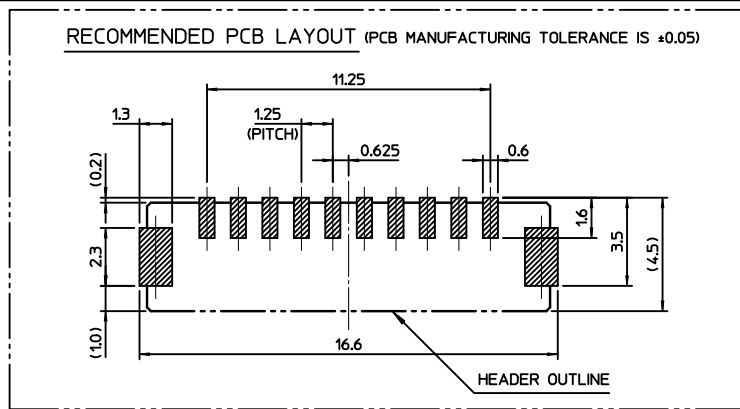


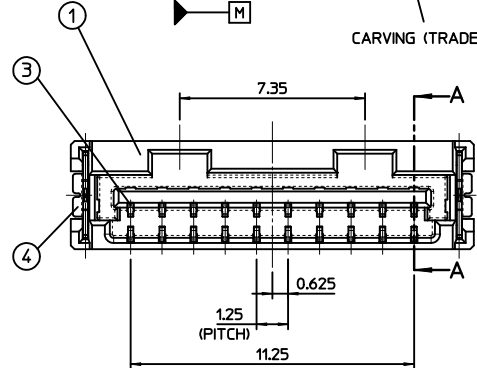
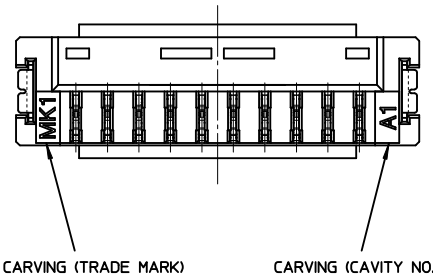
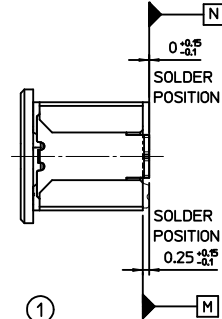
SECTION A-A (SCALE 10:1)

<PART LIST>

NO.	PART NAME
①	HEADER
②	PICK-UP COVER
③	CONTACT TERMINAL
④	FITTING NAIL



ISOMETRIC VIEW



PICK-UP COVER OPENED

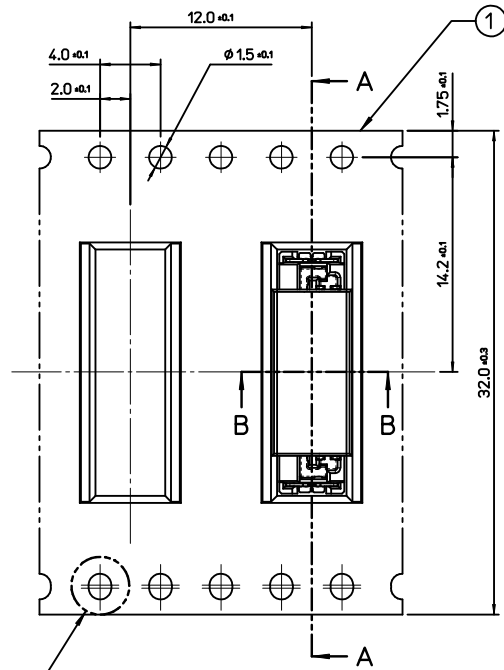
NOTE

- MATED WITH : 104105-1000
- MATERIAL
 - HEADER : THERMOPLASTIC, HALOGEN FREE UL94V-0, COLOR OF NATURAL
 - PICK-UP COVER : THERMOPLASTIC, UL94V-0, COLOR OF NATURAL
 - CONTACT TERMINAL : COPPER ALLOY (t=0.2)
 - FITTING NAIL : COPPER ALLOY (t=0.2)
- FINISHES
 - CONTACT TERMINAL : PURE-TIN PLATING ON OVERALL. THICKNESS 3.0µm~5.0µm UNDER PLATING Ni OVERALL. THICKNESS 1.25µm~3.75µm
 - FITTING NAIL : PURE-TIN PLATING ON OVERALL. THICKNESS 3.0µm~5.0µm UNDER PLATING Ni OVERALL. THICKNESS 1.25µm~3.75µm
- COPLANALITY OF SOLDER TAILS (PEAK TEMP. : 260°C),
 - BEFORE REFLOW : 0.08 MAX.
 - AFTER REFLOW : 0.1 MAX.
- PRODUCT SPECIFICATION : PS-104099-001
- PACKING INFORMATION : PK-104099-001

<TABLE>

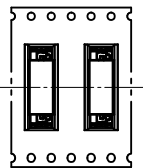
1040991017	NATURAL
ORDER NO.	COLOR
SCALE 5:1	DESIGN UNITS METRIC
THIRD ANGLE PROJECTION	
1.25 W/B ST. CONN. 10P HEADER ASS'Y	
MOLEX INCORPORATED	
MATERIAL NO. 1040991017	DOCUMENT NO. SD-104099-001
SHEET NO. 1 OF 1	

RELEASED EC NO: KOR2011-0072 DRWN: HTSONG 2011/01/10 CHKD: SHCHU 2011/01/10 APPR: YUNSIKIM 2011/01/10	QUALITY SYMBOLS	GENERAL TOLERANCES (UNLESS SPECIFIED)	DIMENSION STYLE														
	$\nabla = 0$ $\sphericalangle = 0$	<table border="1"> <thead> <tr> <th></th> <th>mm</th> <th>INCH</th> </tr> </thead> <tbody> <tr> <td>4 PLACES</td> <td>± ---</td> <td>± ---</td> </tr> <tr> <td>3 PLACES</td> <td>± ---</td> <td>± ---</td> </tr> <tr> <td>2 PLACES</td> <td>± 0.25</td> <td>± ---</td> </tr> <tr> <td>1 PLACE</td> <td>± 0.25</td> <td>± ---</td> </tr> </tbody> </table>		mm	INCH	4 PLACES	± ---	± ---	3 PLACES	± ---	± ---	2 PLACES	± 0.25	± ---	1 PLACE	± 0.25	± ---
	mm	INCH															
4 PLACES	± ---	± ---															
3 PLACES	± ---	± ---															
2 PLACES	± 0.25	± ---															
1 PLACE	± 0.25	± ---															
A	DESCRIPTION	ANGULAR ± 1 °	DRAWN BY HTSONG DATE 2010/06/28 CHECKED BY SHCHU DATE 2010/06/28 APPROVED BY YSKIM DATE 2010/06/28 MATERIAL NO. 1040991017														
DRAFT WHERE APPLICABLE MUST REMAIN WITHIN DIMENSIONS		THIS DRAWING CONTAINS INFORMATION THAT IS PROPRIETARY TO MOLEX INCORPORATED AND SHOULD NOT BE USED WITHOUT WRITTEN PERMISSION															

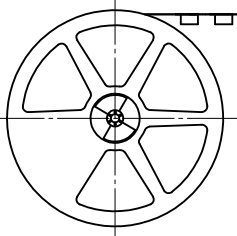


DETAIL 1

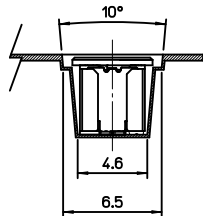
PULL OUT DIRECTION



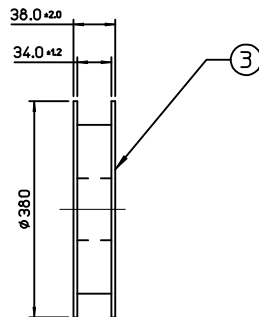
PULL OUT DIRECTION



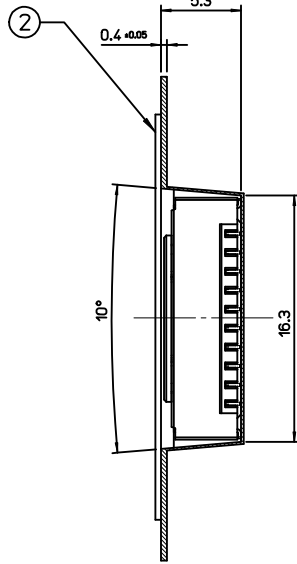
PLASTIC BOBBIN



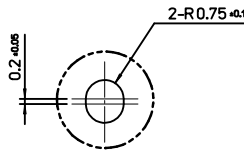
SECTION B-B



3



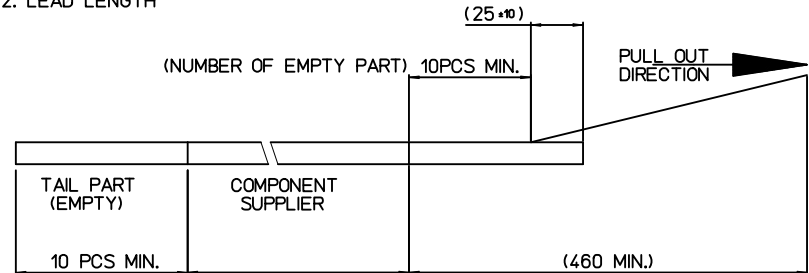
SECTION A-A



DETAIL 1 (SCALE 5:1)

NOTE
1. QUANTITY OF CONNECTORS : 1,300 PCS/REEL

2. LEAD LENGTH



3. PEELING OFF FORCE OF COVER TAPE : 0.1N~0.59N(10.20F~60GF)
(PEELING DIRECTION AS SHOW IN FOLLOW FIG.)
PEELING OFF SPEED : 300mm/Min.(Ref.)



4. FLASH IN ANY PORTION SHOULD BE LESS THAN 0.20mm MAX.
5. UNLESS OTHERWISE SPECIFIED INNER R0.2 MAX
6. DRAFT ANGLE 3°MAX

<TABLE>

104099-1017	104099-1017	32.0mm	104099-9001
MATERIAL NO.	CONNECTOR	TAPE WIDTH	EMBOSS TAPE

③	PLASTIC BOBBIN	HI P.S	WHITE
②	COVER TAPE	PET ANTISTATIC	26.0mm
①	CARRIER (EMBOSS) TAPE	PET ANTISTATIC	
NO.	DESCRIPTION	MATERIAL	REMARK

RELEASED	EC NO: KOR2011-0072	2011/01/10	2011/01/10	2011/01/10
DRWN: HTSONG	CHKD: SHCHU	APPR: YUNSIKKIM		
DESCRIPTION				
QUALITY SYMBOLS	▽=0	∇=0		
REV	A			

GENERAL TOLERANCES (UNLESS SPECIFIED)	DIMENSION STYLE	SCALE	DESIGN UNITS	THIRD ANGLE PROJECTION
	MM ONLY	3:1	METRIC	
4 PLACES ± --- ± ---	DRAWN BY	DATE	TITLE	
3 PLACES ± --- ± ---	HTSONG	2010/06/28	1.25 W/B ST. CONN. 10P	
2 PLACES ± 0.25 ± ---	CHECKED BY	DATE	EMBOSS PACKAGE	
1 PLACE ± 0.25 ± ---	SHCHU	2010/06/28		
ANGULAR ± 3 °	APPROVED BY	DATE		
	YSKIM	2010/06/28		
DRAFT WHERE APPLICABLE MUST REMAIN WITHIN DIMENSIONS	MATERIAL NO.	DOCUMENT NO.		
	SEE TABLE	SD-104099-002		
	SIZE A3			

DRAWN BY	DATE	TITLE
HTSONG	2010/06/28	1.25 W/B ST. CONN. 10P
CHECKED BY	DATE	EMBOSS PACKAGE
SHCHU	2010/06/28	
APPROVED BY	DATE	
YSKIM	2010/06/28	
MATERIAL NO.	DOCUMENT NO.	
SEE TABLE	SD-104099-002	
SIZE A3		

SCALE	DESIGN UNITS	THIRD ANGLE PROJECTION
3:1	METRIC	
1.25 W/B ST. CONN. 10P		
EMBOSS PACKAGE		
MOLEX INCORPORATED		
MATERIAL NO.	DOCUMENT NO.	SHEET NO.
SEE TABLE	SD-104099-002	1 OF 1
THIS DRAWING CONTAINS INFORMATION THAT IS PROPRIETARY TO MOLEX INCORPORATED AND SHOULD NOT BE USED WITHOUT WRITTEN PERMISSION		