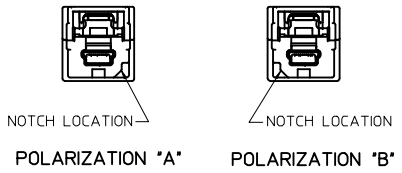


MINI-B PLUG POLARIZATION OPTIONS

WIRING DIAGRAM

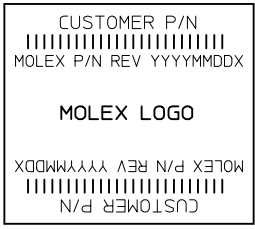
ASSEMBLY MATERIAL NUMBERS



| MINI-B PLUG (HOST) |           |                            | MINI-B PLUG (TARGET) |             |                  |
|--------------------|-----------|----------------------------|----------------------|-------------|------------------|
| SIGNAL NAME        | CONTACT # | WIRE COLORS                | WIRE COLORS          | CONTACT #   | SIGNAL NAME      |
| TPB-               | PIN 1     | RED                        | GREEN                | PIN 5       | TPA+             |
| TPB+               | PIN 2     | GREEN                      | RED                  | PIN 4       | TPA-             |
| SIGNAL SHIELDING   | PIN 3     | SIGNAL SHIELD DRAIN WIRE   | SIGNAL SHIELDING     | PIN 3       | SIGNAL SHIELDING |
| TPA-               | PIN 4     | ORANGE                     | BLUE                 | PIN 2       | TPB+             |
| TPA+               | PIN 5     | BLUE                       | ORANGE               | PIN 1       | TPB-             |
| CABLE BRAID        | SHELL     | BRAID TO SHELL TERMINATION | SHELL                | CABLE BRAID |                  |

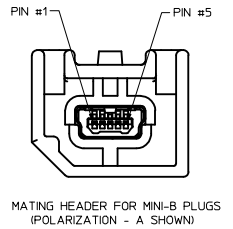
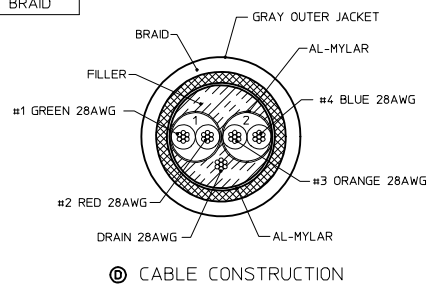
| MOLEX MAT. NO. | MINI-B POLARIZATION | CUSTOMER PART NO. | DIM "A" |
|----------------|---------------------|-------------------|---------|
| 111020-1001    | A TO B              |                   | 500±10  |
| 111020-1002    | A TO A              |                   | 500±10  |
| 111020-1003    | B TO B              |                   | 500±10  |

- NOTES:
- PART MUST CONFORM TO THE ELECTRICAL CONNECTION SYSTEM DESIGN SPECIFICATION (SDS) VER 13, DATED 06-APR-06; TEMP CLASS "-40~85°C".
  - PART MUST CONFORM TO THE LATEST LEVEL OF SAE/USCAR-30 & USB 2.0.
  - ALL PLASTIC PARTS MUST HAVE MATERIAL IDENTIFICATION SYMBOLS CLEARLY MARKED, WHEREVER PACKAGE SIZE PERMITS.
  - GENERAL TOLERANCES: ±0.25 ALL ONE PLACE DIMENSIONS, ±0.15 ALL TWO PLACE DIMENSIONS, AND ±0.5° ALL ANGULAR DIMENSIONS.
  - 0.3MM MAXIMUM RADIUS PERMISSIBLE ON EDGES AND FILLETS SHOWN AS SHARP FOR PLASTIC PARTS.
  - PARTS ARE TO BE FREE OF SCRATCHES, DISCOLORATION, SALT RESIDUE OR OTHER IMPERFECTIONS THAT MAY AFFECT FUNCTION OR FIT OF PART.
  - IDENTIFICATION LABEL MUST DISPLAY CUSTOMER PART NUMBER, SUPPLIER PART NUMBER, DATE CODE (YYYYMMDD), REVISION, AND LOGO.
  - LEAD FREE, NO ROHS EXEMPTIONS.
  - FINISHES: TERMINAL: SELECTIVE GOLD (Au) IN THE CONTACT AREA; THICKNESS = 0.75 MICROMETER (30 MICROINCH) MINIMUM OVER NICKEL (Ni) OVERALL; THICKNESS = 1.25 MICROMETER (50 MICROINCH) MINIMUM.



LABEL FORMAT

LAST LETTER OF DATE CODE "X":  
 'D' = DAY SHIFT, 'N' = NIGHT SHIFT  
 BAR CODE = MOLEX MATERIAL NUMBER



|                                                                                                                                       |                                                                               |                                                                                                                                                        |                                                                                                                                                        |                                                                  |
|---------------------------------------------------------------------------------------------------------------------------------------|-------------------------------------------------------------------------------|--------------------------------------------------------------------------------------------------------------------------------------------------------|--------------------------------------------------------------------------------------------------------------------------------------------------------|------------------------------------------------------------------|
| UPDATED PLUG 145G<br>IEC NO: CPG2013-2725<br>D: DRINKHEMARTINEZ 2010/03/05<br>CHKO: JPAWLICKI 2010/03/05<br>APPROX: MONROE 2010/04/01 | QUALITY SYMBOLS<br>∇=0<br>∇=0<br>∇=0                                          | GENERAL TOLERANCES (UNLESS SPECIFIED)<br>mm INCH<br>4 PLACES +--- +---<br>3 PLACES +--- +---<br>2 PLACES +--- +---<br>1 PLACE +--- +---<br>0 PLACE ± ± | DIMENSION STYLE<br>MM ONLY<br>DRAWN BY DATE<br>J.REEVES 2007/09/11<br>CHECKED BY DATE<br>J.REEVES 2007/09/11<br>APPROVED BY DATE<br>KMONROE 2010/03/08 | SCALE<br>2:1<br>DESIGN UNITS<br>METRIC<br>THIRD ANGLE PROJECTION |
|                                                                                                                                       | MATERIAL NO. SD-111020-1000<br>DOCUMENT NO. SD-111020-1000                    |                                                                                                                                                        |                                                                                                                                                        |                                                                  |
|                                                                                                                                       | TITLE<br>1394 CABLE ASSEMBLY<br>MINI-B PLUG STRT TO<br>MINI-B PLUG CROSS-OVER |                                                                                                                                                        |                                                                                                                                                        |                                                                  |
|                                                                                                                                       | SHEET NO.<br>1 OF 1                                                           |                                                                                                                                                        |                                                                                                                                                        |                                                                  |