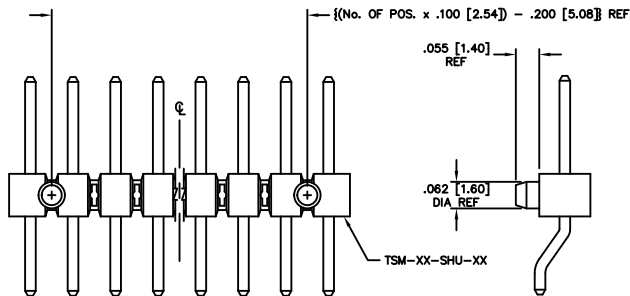
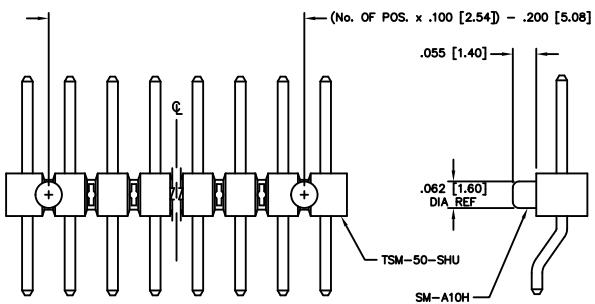


REV CM

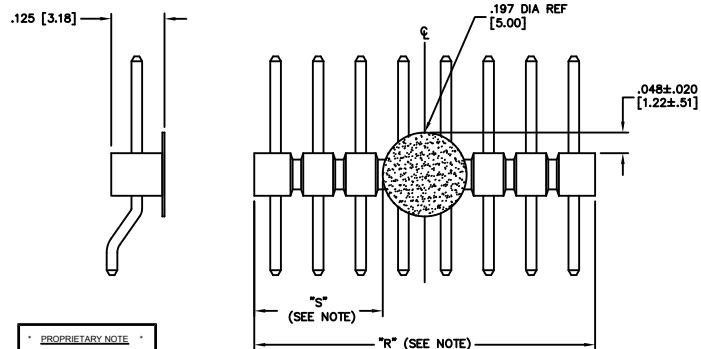
**FIG 2**  
 -A- ALIGNMENT PIN OPTION (MOLDED)  
 DIFFERENT AS SHOWN, OTHERWISE SAME AS FIG. 1.



**FIG 4**  
 -A- ALIGNMENT PIN OPTION (STAKED)  
 DIFFERENT AS SHOWN, OTHERWISE SAME AS FIG. 1.



**FIG 6**  
 -K- POLYIMIDE FILM PAD



NOTE:  
 "R" = USED MEASURED DIMENSIONS (REF)  
 "S" = {( "R" - .1969 [5.000] ) / 2 } ±.020 [.51]

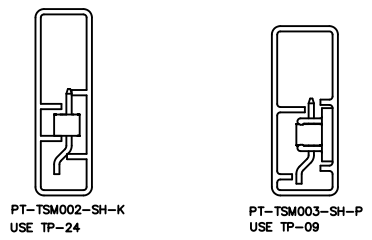
**PROPRIETARY NOTE**  
 THIS DOCUMENT CONTAINS PROPRIETARY AND CONFIDENTIAL INFORMATION. IT IS THE PROPERTY OF SAMTEC AND IS NOT TO BE REPRODUCED, COPIED, OR DISSEMINATED IN ANY MANNER WITHOUT THE WRITTEN PERMISSION OF SAMTEC. ANY UNAUTHORIZED USE OR DISCLOSURE OF THIS INFORMATION IS STRICTLY PROHIBITED. SAMTEC SHALL NOT BE LIABLE FOR ANY DAMAGES, INCLUDING CONSEQUENTIAL DAMAGES, ARISING FROM THE USE OF THIS DOCUMENT.

UNLESS OTHERWISE NOTED  
 DIMENSIONS ARE IN INCHES TOLERANCES ARE:  
 ONE PLACE DECIMALS ±.1 [.3]  
 TWO PLACE DECIMALS ±.01 [.25]  
 THREE PLACE DECIMALS ±.005 [.13]  
 FOUR PLACE DECIMALS ±.0020 [.051]  
 ANGLES ± 2°

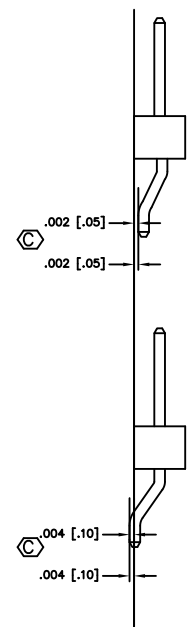
TITLE:  
**TERMINAL STRIP  
 SINGLE SURFACE MOUNT**

DWG NO:  
 TSM-1XX-XX-XXX-SH-XX-XXX-XX  
 SHEET **Q** 2

**FIG 5**  
 PACKAGING



1 ALL PARTS WITH PLASTIC PAD USE PT-TSM003-SH-P  
 2 ALL PARTS WITHOUT PLASTIC PAD USE PT-TSM002-SH-K



**FIG 7**  
 -SH SURFACEMOUNT DIAGRAM

**samtec** EXISPROD\ASSEMBLY\100 TSMHAM2

520 PARK EAST BLVD. NEW ALBANY, INDIANA 47150  
 PHONE (812) 944-6733 P.O. BOX 1147  
 CODE 55322

MADE BY:  
 REIDINGER 7-19-91

TSM-1XX-XX-XXX-SH-XX-XXX-XX  
 SHEET 2 OF 2