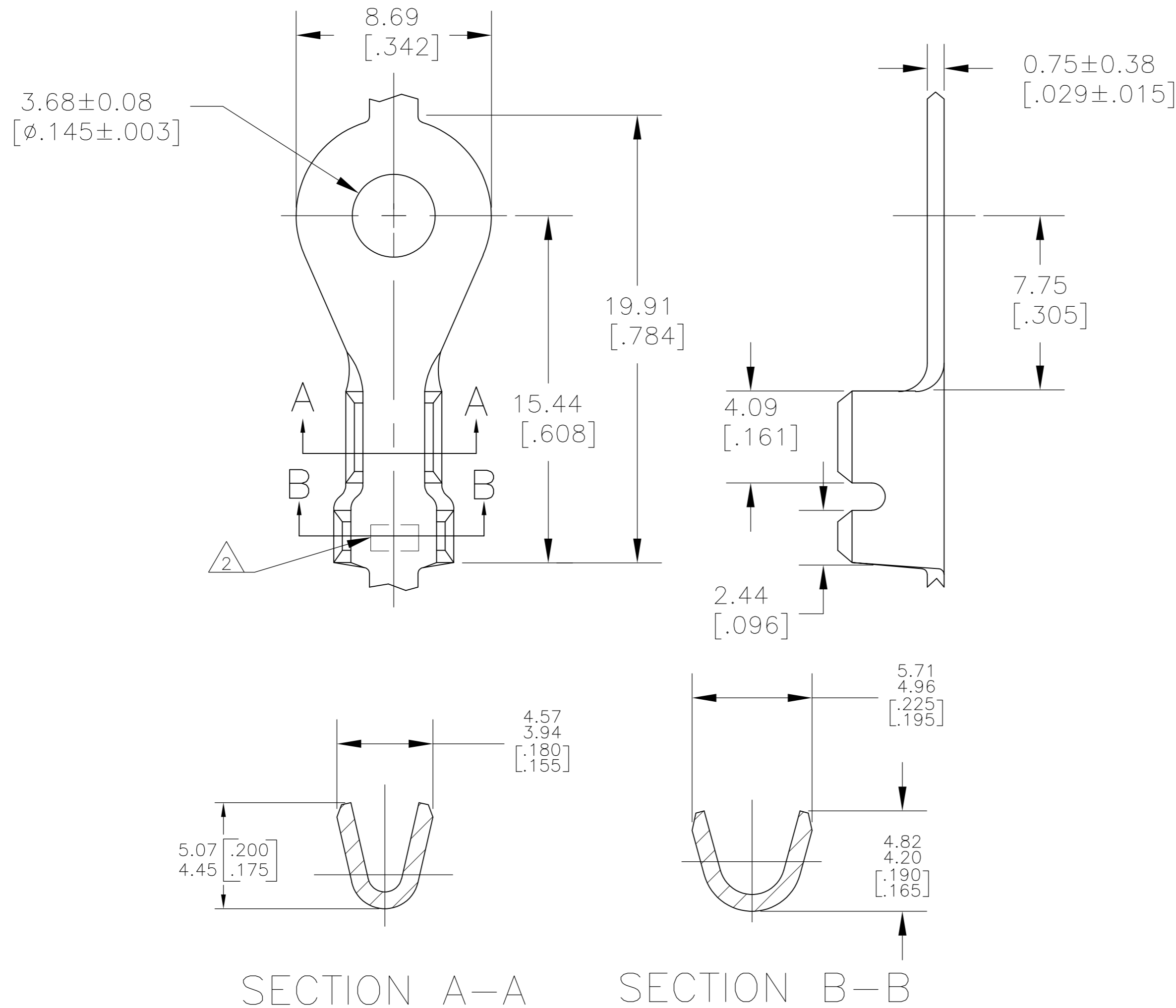


THIS DRAWING IS UNPUBLISHED. RELEASED FOR PUBLICATION
 © COPYRIGHT - TE Connectivity ALL RIGHTS RESERVED.

REVISIONS				
P	LTR	DESCRIPTION	DATE	APVD
Z2		ECR-17-003845	24MAG2017	FV TD



- 1. CONTINUOUS STRIP ON REELS.
- △2 AMP STAMP: AMP FOR 40723, AMP* FOR 40723-1.
- △3 TO BE REELED WITH INTERLEAVING PAPER

082 BRASS			40723-2 △3
H03 PHOSPHOR BRONZE	0.8-2.0mm [18-14] AWG	2.54-3.56 [.100-.140] DIA	40723-1
082 BRASS			40723
MATERIAL	WIRE RANGE	INSULATION RANGE	PART NUMBER

THIS DRAWING IS A CONTROLLED DOCUMENT.		DWN 12FEB2001 MICHAEL S. FEHER	TE TE Connectivity	
DIMENSIONS: mm (in) [INCHES]		CHK 04APR2001 DONALD DECKER		
TOLERANCES UNLESS OTHERWISE SPECIFIED:		APVD 04APR2001 DONALD DECKER	NAME	
0 PLC ± -		PRODUCT SPEC	M3.5 - #6 STUD, TERMINAL, TONGUE, RING	
1 PLC ± -		APPLICATION SPEC	SIZE	CAGE CODE
2 PLC ± 0.25[.010]			A2	00779
3 PLC ± -			DRAWING NO	
4 PLC ± -			C=40723	
ANGLES ± 1°			RESTRICTED TO	
MATERIAL	FINISH	WEIGHT	REV	
SEE TABLE	TIN	0.000000	Z2	
CUSTOMER DRAWING		SCALE	SHEET	
		6:1	1 of 1	