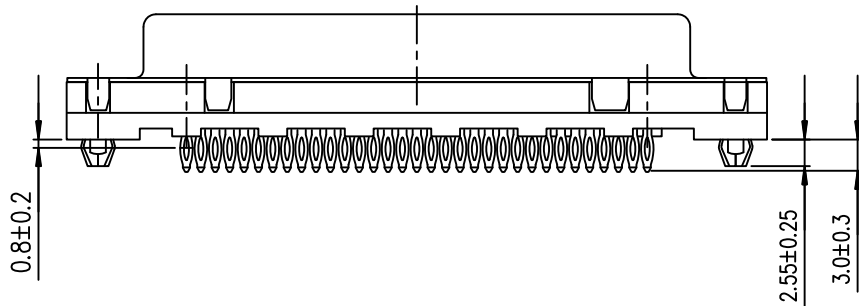
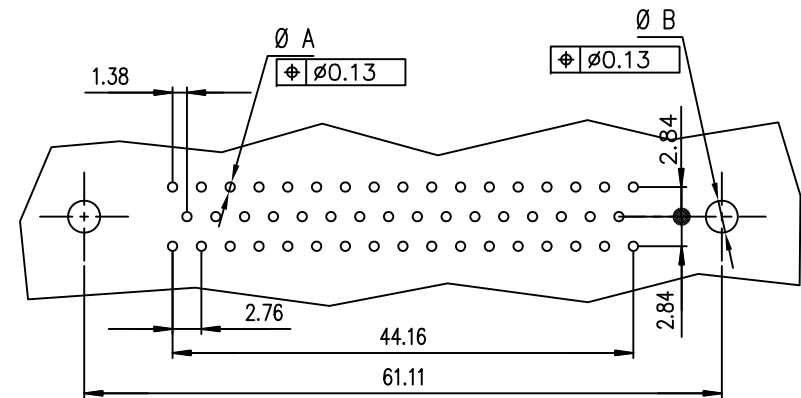


PC board drilling dimensions
(after plating – thickness: 1.60 to 3.20 mm)



ROHS PART NUMBER

PART NUMBER	
200 Mating	D50S91C4GX00LF
500 Mating	D50S91C6GX00LF

GENERAL CHARACTERISTICS AND ROHS INFORMATIONS:
SEE DRAWING C01-8646-0001

mat'l. code		surface	tolerance	projection	product family
		ISO 1302	ISO 406 ISO 1101		D-SUB
ltr		ecn no	dr	date	title
G	ELX-I-21654	AB	2015-10-26		FEMALE DELTA-D 50 EUROPE
H	ELX-I-24020	AAB	2016-06-06		STRAIGHT PRESS-FIT
		angles	linear	mm	dwg no
		0°±2'	.0±0.1	←	sheet 1 of 1
			.00±0.1	→	size
			.000±0.1	scale 2:1	A3
		dr	PESSON	1995-10-03	Amphenol FCI
		engr	MITHUN PAUL	2016-06-06	
		chr	ATHUL A.B	2016-06-06	
		appd	BIJU K PAUL	2016-06-06	
sheet index	revision	H	type Product Customer Drawing		
	sheet	1			