

REFERENCE SPECIFICATIONS

-NFC 93425 (in compliance with HE 507)

PHYSICAL CHARACTERISTICS

-INSULATOR MATERIAL: THERMOPLASTIC UL94V0

-CONTACT MATERIAL: BRASS

-ACCESSORIES: STAINLESS STEEL or BRASS

-SHELLS: STEEL

ELECTRICAL CHARACTERISTICS

-NOMINAL CURRENT: 7.5A (SIGNAL CONTACT)

-CONTACT RESISTANCE: <=7.3 m Ohms SIGNAL

-CONTACT/CONTACT : >=1000 V

-CONTACT/GROUND : >=1200 V

-INSULATION RESISTANCE: >=5000 MOhms

- CLIMATIC CATEGORY: 55/125/21

TEMPERATURE RANGE -55°C TO +125°C

DAMP HEAT STEADY STATE 56 DAYS

SALT SPRAY 48 HOURS

DBML13W3P300NLF

Series

Shell size: **E A B C D**
see sheet 3

M :characteristic
for the DM series

Front accessory definition
see sheet 2

Blank :without accessory

L :threaded insert M3

O :threaded insert UNC 4-40

V :female screw UNC 4-40

F :floating mounting

S :spacer

Layout of contacts (see sheet 3)

Contacts

P :Pin

Termination type

3 Straight version

Plating

00 straight solder 500 matings/unmatings

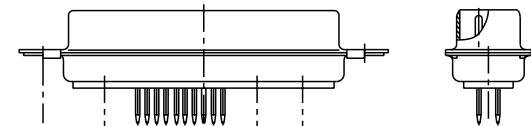
43 straight solder 500 matings/unmatings for harsh environment

N :obligatory indication for HE 507 series

See note RoHS

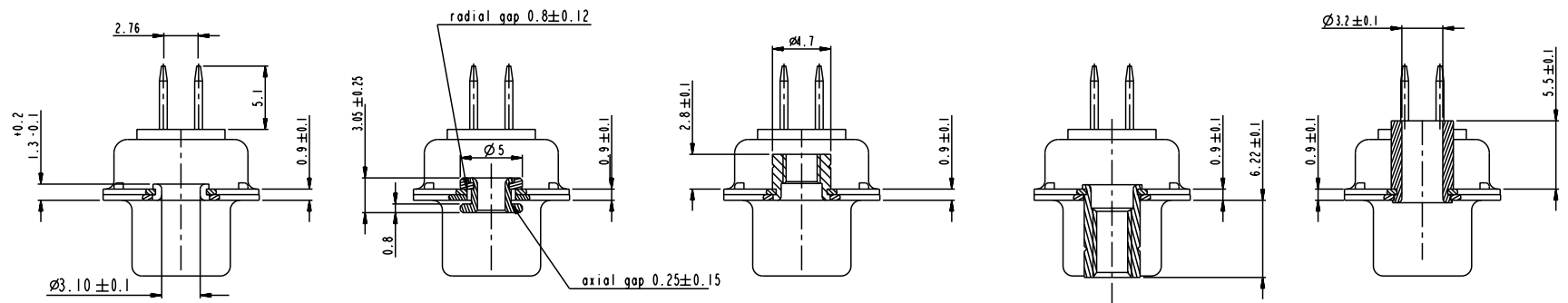
NOTE RoHS INFORMATION

- The "LF" products meet european union Directives and other country regulations as described in GS-22-008.
- The housing will withstand exposure to 260°C peak temperature for 3.5 seconds in a wave solder application with a 1.6mm minimum thick circuit board. See application notes/procedures if they are available.
- Termination plating spec:
 - Signal contacts: Gold over Nickel
- Active area plating spec:
 - Signal contacts: Gold over Nickel
- Shell plating : Bright pure tin (white or transparent color)
- Accessories: Bright pure tin (white or transparent color)
- Packaging spec: See GS-14-920



I3W3 FOR EXAMPLE

www.fciconnect.com				surface	tolerance std	projection	mm	
				ISO 1302	ISO 406	ISO 1101		
				TOLERANCES UNLESS OTHERWISE SPECIFIED				
				ANGULAR	0.X	±0.3	size	Scale
				LINEAR	0.XX	±0.1	A2	2:1
				0° ±2'	0.XXX	±0.05	ECN	LS07-0273
				Product family				
				- Spec ref				
rev	ecn no	dr	date	Dr	M PESSON	11/10/05		
A	LS06-0008	MPE	2006/01/16	Eng	11/10/05	P LEGARE		
B	LS07-0235	MPE	2007/09/13	Chr				
C	LS07-0273	MPE	2007/10/29	Appr				
				FCI		SUB MALE DMW	deg no	Rev.
				mixed power straight solder		C01-8637-1683	C	
				catalog no		CUSTOMER	sheet 1 of 7	



FRONT ACCESSORY **Blank** without **F** floating mounting **L** insert M3 **O** insert UNC 4.40 **V** female screw UNC 4.40 **S** Spacer

shell size LAYOUTS

PART NUMBER	FRONT ACCESSORY
D*MxWxP300NLF	without
D*MFxWxP300NLF	floating mounting
D*MLxWxP300NLF	insert M3
D*MOxWxP300NLF	insert UNC 4.40
D*MVxWxP300NLF	female screw UNC 4.40
D*MSxWxP300NLF	Spacer
D*MxWxP343NLF	without
D*MFxWxP343NLF	floating mounting
D*MLxWxP343NLF	insert M3
D*MOxWxP343NLF	insert UNC 4.40
D*MVxWxP343NLF	female screw UNC 4.40
D*MSxWxP343NLF	Spacer

- * xWx
- E 5W1
- A 11W1
- A 7W2
- B 21W1
- B 17W2
- B 13W3
- B 9W4
- C 25W3
- C 21WA4
- C 27W2
- D 47W1
- D 24W7
- D 36W4

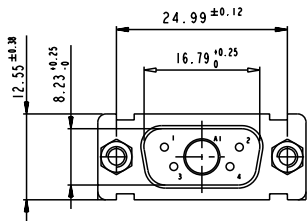
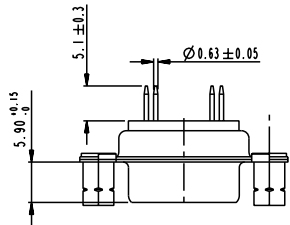
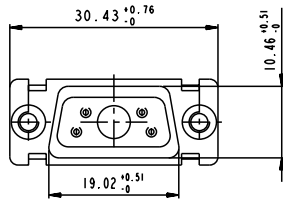
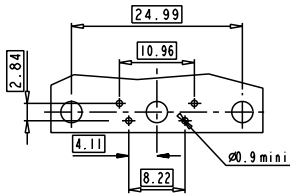
Copyright FCJ

www.fciconnect.com		surface ISO 1302	tolerance std ISO 406 ISO 1101	projection mm
		TOLERANCES UNLESS OTHERWISE SPECIFIED		
Dr M PESSON	11/10/05	ANGULAR	0.X ±0.3	size A2 Scale 2:1
Eng 11/10/05	P LEGARE	LINEAR	0.XX ±0.1	ECN LS07-0273
Chr		0° ±2°	0.XXX ±0.05	Product family - Spec ref
FCJ		SUB MALE DMW		Rev. C
mixed power straight solder		cat no	C01-8637-1683	sheet 2 of 7
CUSTOMER				

SCALE: 4

5W1

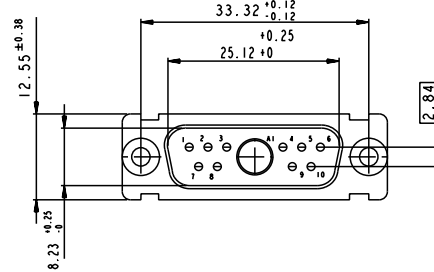
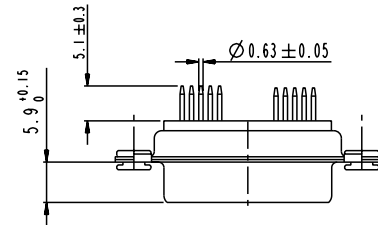
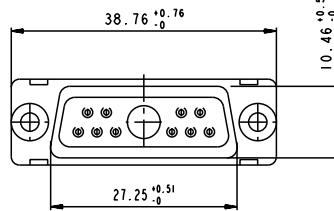
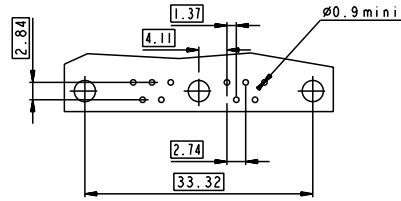
LAYOUT AND CONNECTOR DIMENSIONS



Floating signal contacts

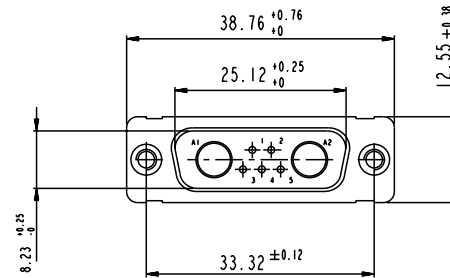
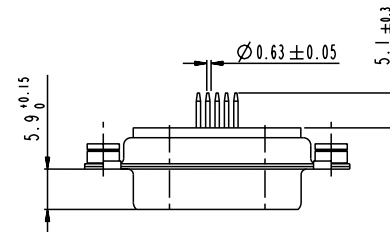
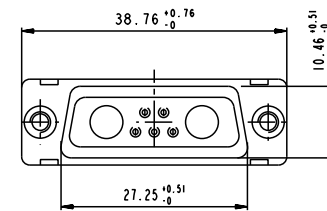
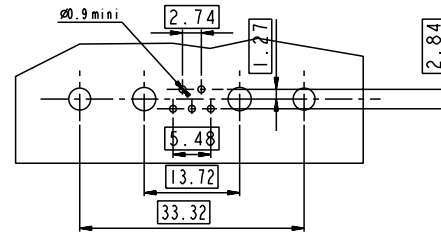
11W1

LAYOUT AND CONNECTOR DIMENSIONS

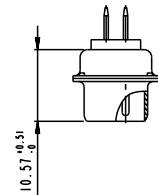


7W2

LAYOUT AND CONNECTOR DIMENSIONS



SIDE VIEW FOR LAYOUTS: E A B C

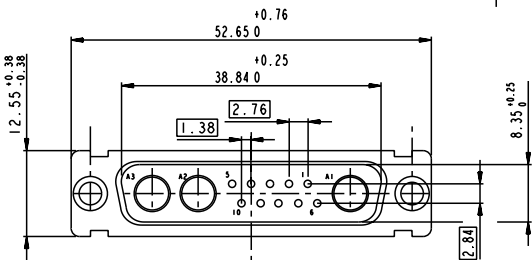
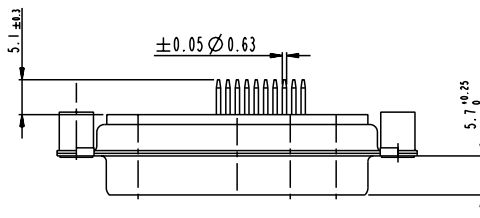
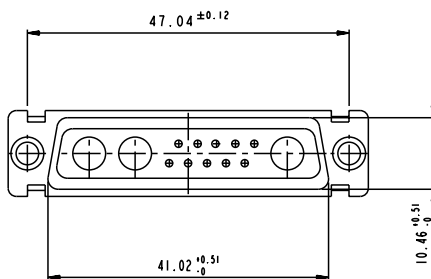
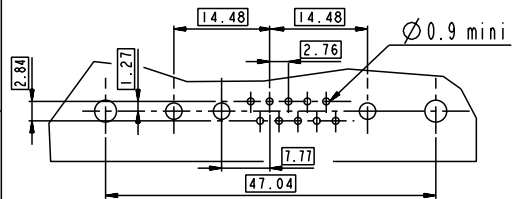


Copyright FCI.

www.fciconnect.com		surface ISO 1302	tolerance std ISO 406 ISO 1101	projection ISO 1101	mm
Dr M PESSON 11/10/05		TOLERANCES UNLESS OTHERWISE SPECIFIED		size A2	Scale 2:1
Eng 11/10/05	P LEGARE	ANGULAR	LINEAR	0.X ±0.3	0.XX ±0.1
Chr		0° ±2°		0.XXX ±0.05	ECN LS07-0273
Appr		Product family			Spec ref
FCI SUB MALE DMW mixed power straight solder		cat no	C01-8637-1683	Rev. C	
		CUSTOMER	sheet 3 of 7		

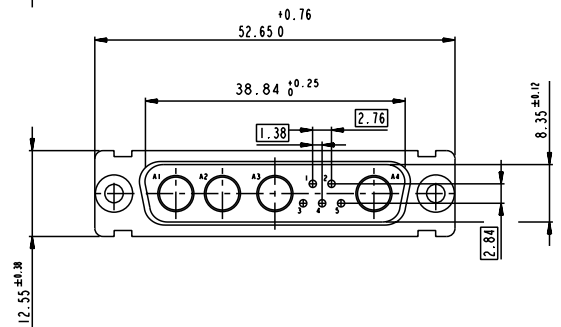
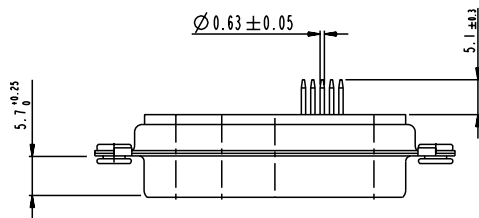
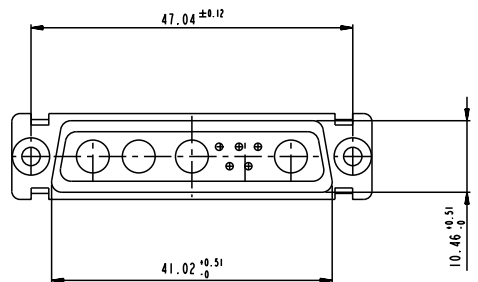
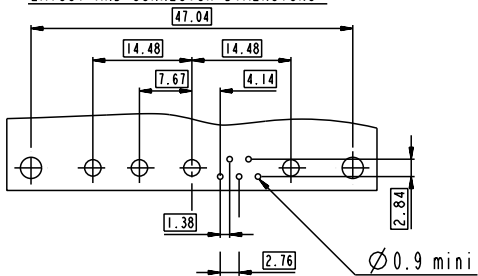
13W3

LAYOUT AND CONNECTOR DIMENSIONS



9W4

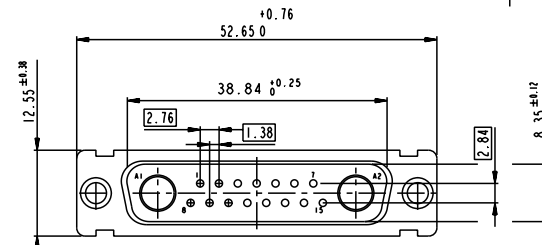
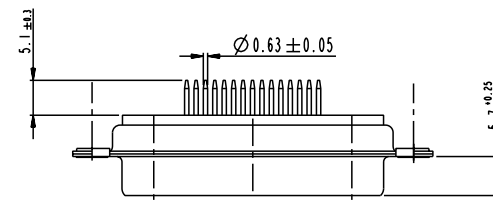
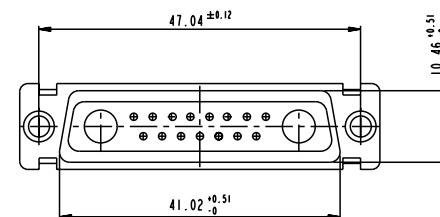
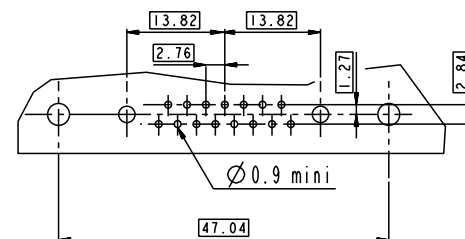
LAYOUT AND CONNECTOR DIMENSIONS



Floating signal contacts

17W2

LAYOUT AND CONNECTOR DIMENSIONS

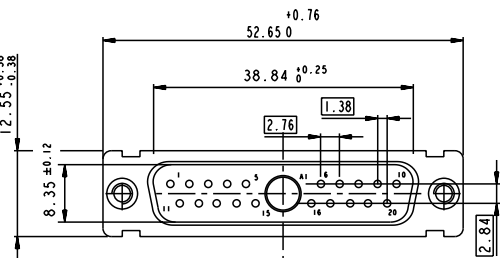
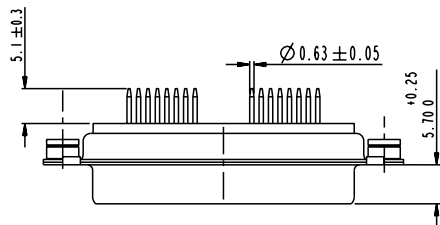
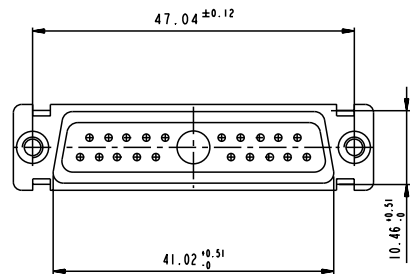
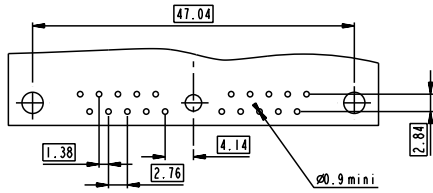


www.fciconnect.com		surface ISO 1302	tolerance std ISO 406 ISO 1101	projection mm
		TOLERANCES UNLESS OTHERWISE SPECIFIED		
Dr M PESSON	11/10/05	ANGULAR	size	Scale
Eng 11/10/05	P LEGARE	LINEAR	size	2:1
Chr		0° ±2°	0.xxx ±0.05	ECN LS07-0273
Appr		Product family	-	Spec ref
		SUB MALE DMW		Rev. C
mixed power straight solder		C01-8637-1683		sheet 4 of 7
catalog no		CUSTOMER		

Copyright FCI.

21W1

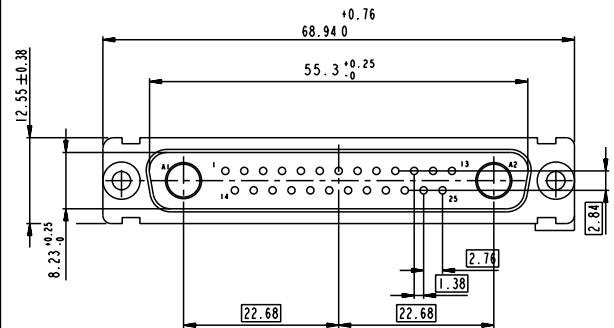
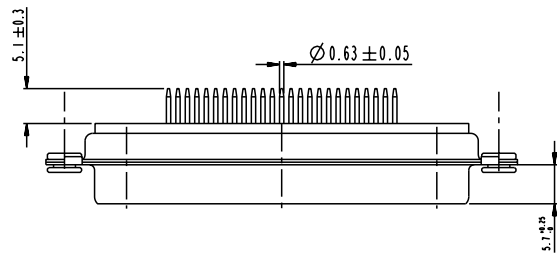
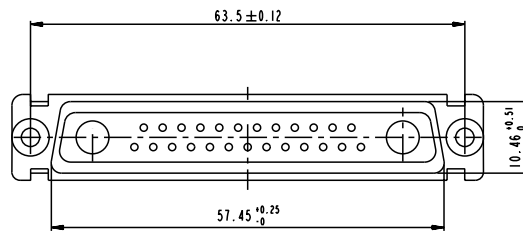
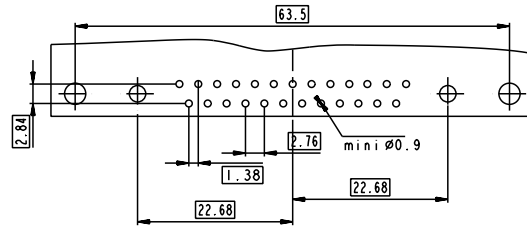
LAYOUT AND CONNECTOR DIMENSIONS



Floating signal contacts

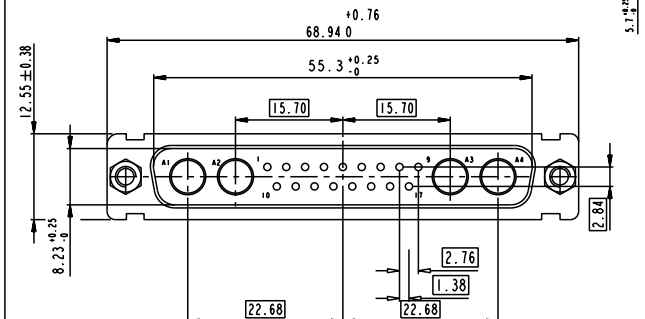
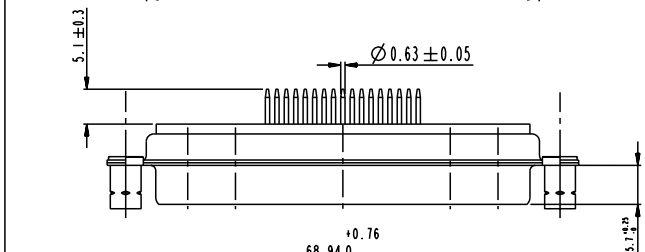
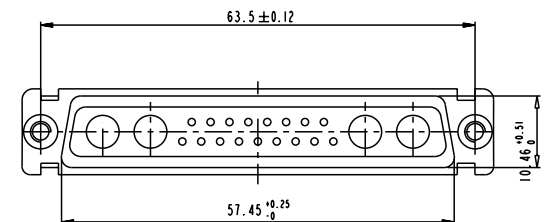
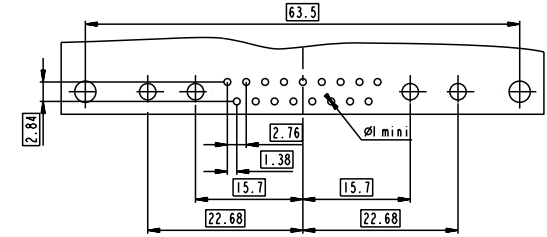
27W2

LAYOUT AND CONNECTOR DIMENSIONS



21WA4

LAYOUT AND CONNECTOR DIMENSIONS

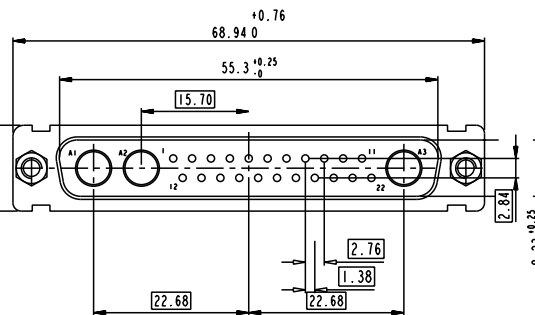
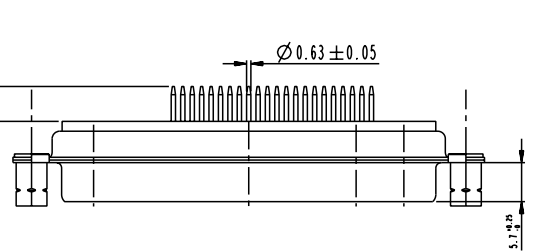
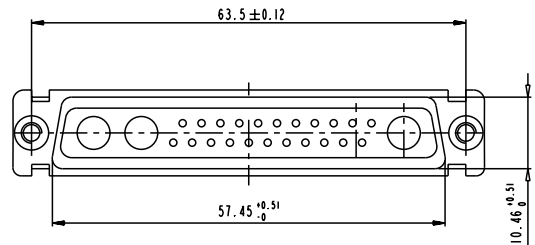
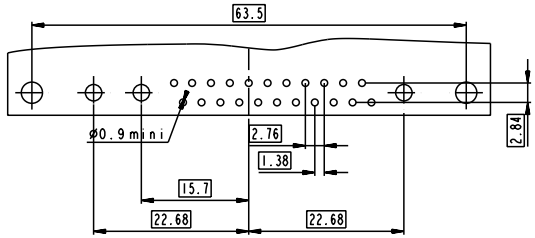


www.fciconnect.com		surface - ISO 1302	tolerance std ISO 406 ISO 1101	projection mm
Dr M PESSON 11/10/05		TOLERANCES UNLESS OTHERWISE SPECIFIED		size A2 Scale 2:1
Eng 11/10/05	P LEGARE	ANGULAR	0.X ±0.3	ECN LS07-0273
Chr		LINEAR	0.XX ±0.1	Spec ref
Appr		0° ±2°	0.XXX ±0.05	
Product family				
Title SUB MALE DMW		deg no C01-8637-1683	Rev. C	
mixed power straight solder		CUSTOMER sheet 5 of 7		
catalog no				

Copyright FCI. **FCI**

25W3

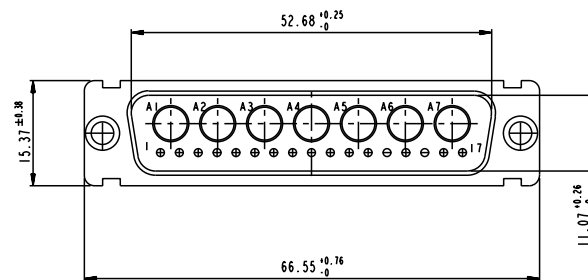
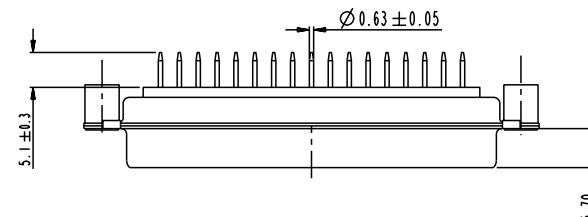
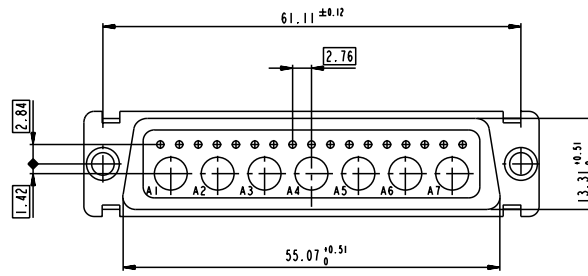
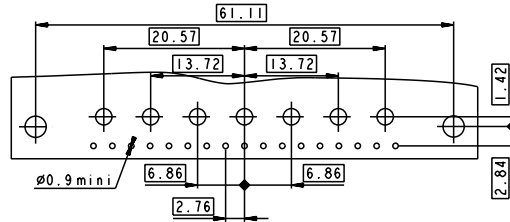
LAYOUT AND CONNECTOR DIMENSIONS



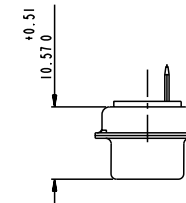
Floating signal contacts

24W7

LAYOUT AND CONNECTOR DIMENSIONS



SIDE VIEW FOR LAYOUT: D

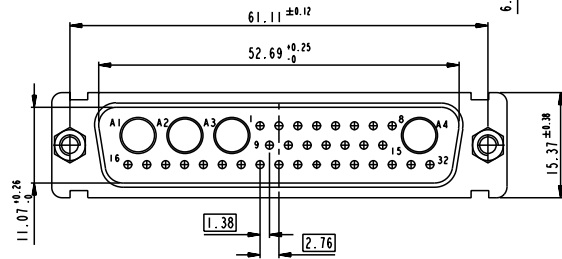
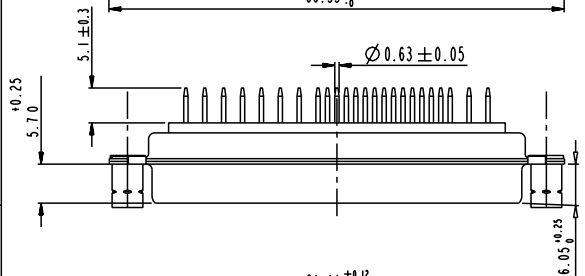
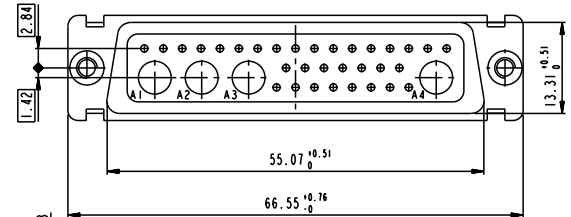
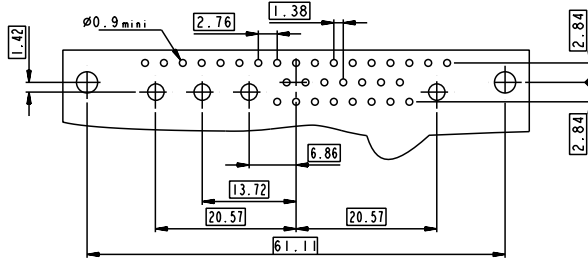


Copyright FCI.

www.fciconnect.com		surface ISO 1302	tolerance std ISO 406 ISO 1101	projection mm	mm
		TOLERANCES UNLESS OTHERWISE SPECIFIED			
Dr M PESSON	11/10/05	ANGULAR	0.X ± 0.3	size A2	Scale 2:1
Eng 11/10/05	P LEGARE	LINEAR	0.XX ± 0.1	ECN	LS07-0273
Chr		0° ± 2°	0.XXX ± 0.05	Spec ref	
Appr		Product family			
FCI		SUB MALE DMW		cat no	C01-8637-1683
		mixed power straight solder		Rev.	C
		catalog no		CUSTOMER	sheet 6 of 7

36W4

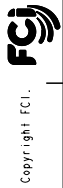
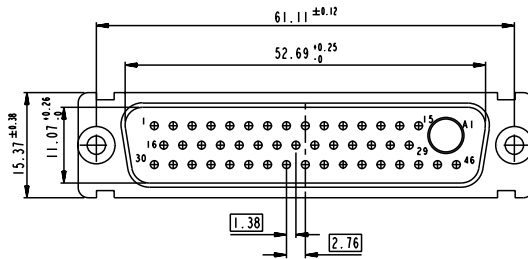
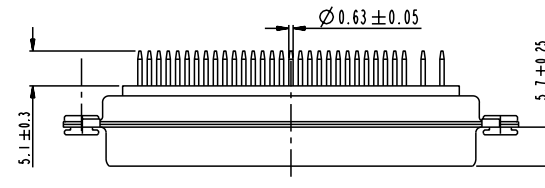
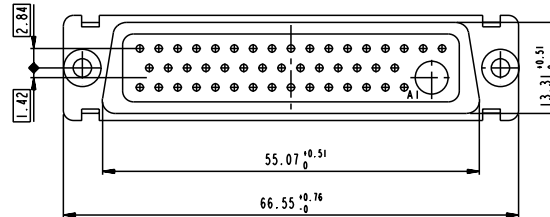
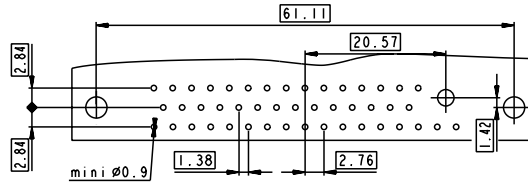
LAYOUT AND CONNECTOR DIMENSIONS



Floating signal contacts

47W1

LAYOUT AND CONNECTOR DIMENSIONS



Copyright FCI

www.fciconnect.com		surface ISO 1302	tolerance std ISO 406 ISO 1101	projection mm
		TOLERANCES UNLESS OTHERWISE SPECIFIED		
Dr M PESSON	11/10/05	ANGULAR	0.X ±0.3	size A2
Eng 11/10/05	P LEGARE	LINEAR	0.XX ±0.1	Scale 2:1
Chr		0° ±2°	0.XXX ±0.05	ECN LS07-0273
Appr		Product family		Spec ref
FCI		SUB MALE DMW		Rev. C
		mixed power straight solder		ang no C01-8637-1683
		catalog no		CUSTOMER sheet 7 of 7