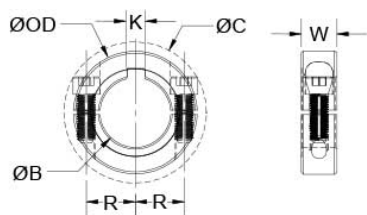




## SPK-17-SS

Ruland SPK-17-SS, 1 1/16" Two-Piece Shaft Collar, 303 Stainless Steel, Clamp Style with Keyway, 1 7/8" OD, 0.500" Width



### Description

Ruland SPK-17-SS is a two-piece shaft collar with a 1 1/16" bore, 1/4" keyway, 1 7/8" OD, and 0.500" width. The clamp style design does not mar the shaft, is easy to remove, and is indefinitely adjustable. SPK-17-SS is commonly used for guiding, spacing, stopping, mounting, and component alignment. Equipment manufacturers benefit from the tightly controlled face to bore perpendicularity (TIR of ? .002"). Perpendicularity is critical for alignment when the shaft collar is used as a load bearing face, mechanical stop, or for mounting components such as gears or bearings. Proprietary processes have been developed by Ruland to maintain superior fit, finish, and holding power. SPK-17-SS is stamped with the Ruland name and bore size for ease of identification. Halves are mated throughout the manufacturing process for proper fit and alignment. Forged screws test beyond ANSI standards to ensure maximum holding power. SPK-17-SS is machined from solid bar stock to a fine burr free finish and sourced exclusively from North American mills. Ruland uses 303 stainless steel with hardware of like material for consistent corrosion resistance. Stainless steel hardware undergoes a proprietary surface treatment process to prevent galling. It is RoHS3 and REACH compliant and manufactured in our Marlborough, MA factory under strict controls using proprietary processes.

### Product Specifications

<b>Bore (B)</b>	1.0625 in	<b>Bore Tolerance</b>	+0.0020 in / +0.0005 in
<b>Keyway (K)</b>	1/4 in	<b>Width (W)</b>	0.500 in
<b>Outer Diameter (OD)</b>	1 7/8 in	<b>Width Tolerance</b>	+0.003 in / -0.010 in
<b>Clearance Diameter (C) MAX</b>	2.140 in	<b>Recommended Gap</b>	0.063 in
<b>Recommended Shaft Tolerance</b>	+0.0000 in / -0.0005 in	<b>Forged Clamp Screw</b>	1/4-28
<b>Screw Material</b>	18-8 300 Series Stainless Steel	<b>Hex Wrench Size</b>	3/16 in
<b>Screw Finish</b>	Bright	<b>Seating Torque</b>	110 lb-in
<b>Screw Location (R)</b>	0.740 in	<b>Number of Screws</b>	2 ea
<b>Material Specification</b>	Type 303 Austenitic, Non-Magnetic Bar	<b>Temperature</b>	-40°F to 350°F (-40°C to 176°C)
<b>Finish Specification</b>	Bright, No Plating	<b>Manufacturer</b>	Ruland Manufacturing
<b>Country of Origin</b>	USA	<b>Weight (lbs)</b>	0.243300
<b>UPC</b>	634529246627	<b>UNSPC</b>	31162811
<b>Tariff Code</b>	8483.60.8000		
<b>Note 1</b>	Performance ratings are for guidance only. The user must determine suitability for a particular application.		
<b>Prop 65</b>	⚠ <b>WARNING</b> This product can expose you to the chemical Nickel (metallic)		