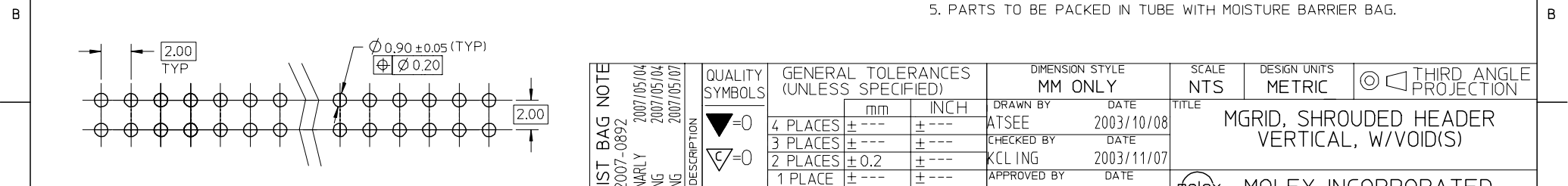
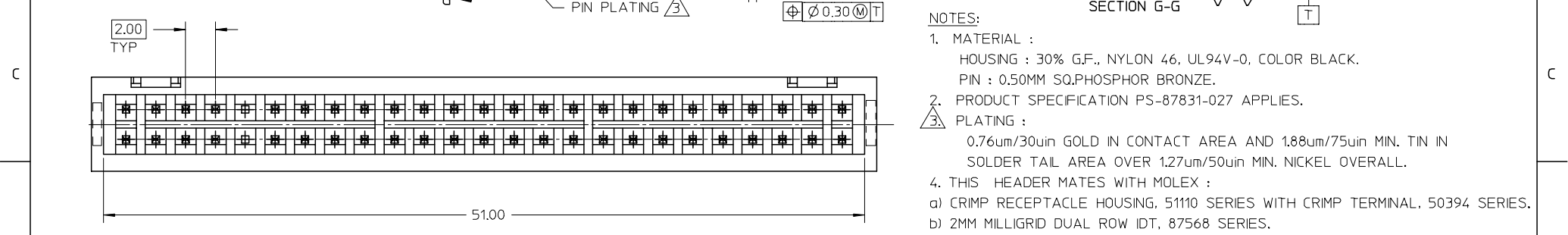
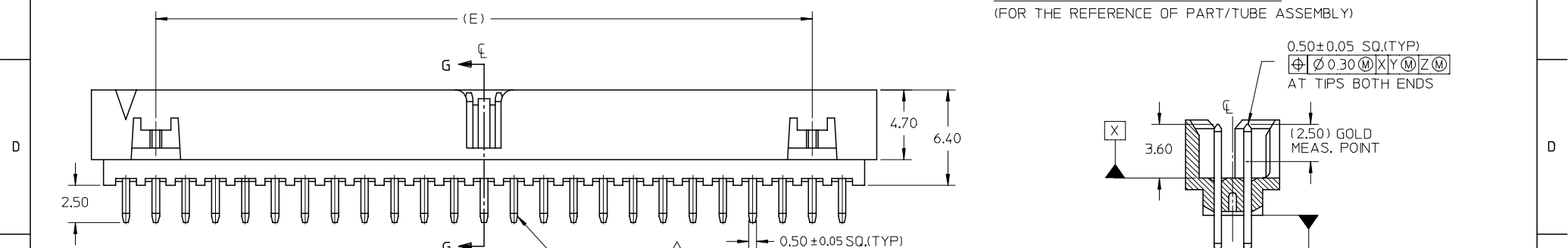
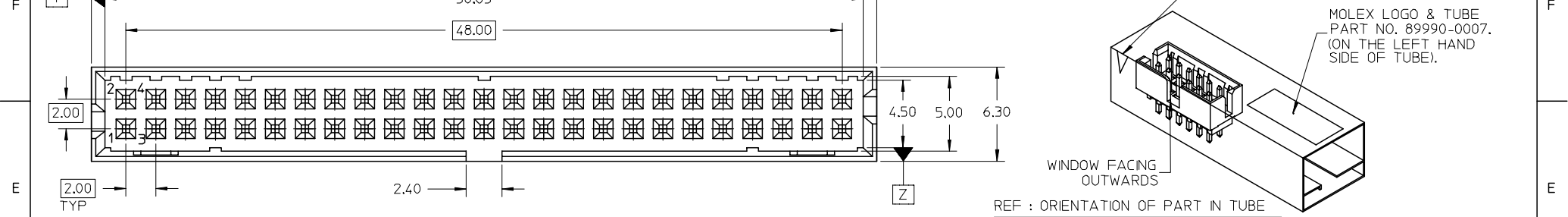


10 9 8 7 6 5 4 3 2 1

P/N IN TUBE	CKT SIZE	VOID(S) CKT
87831-5010	50	9, 10, 27



ADD MOIST BAG NOTE EC NO: S2007-0892 DRWN:GMENARLY CHKD:SKANG APPR:MLONG	2007/05/04 2007/05/04 2007/05/07	DESCRIPTION REV	QUALITY SYMBOLS ▽=0 ∇=0	GENERAL TOLERANCES (UNLESS SPECIFIED)		DIMENSION STYLE MM ONLY		SCALE NTS	DESIGN UNITS METRIC	THIRD ANGLE PROJECTION	
				mm	INCH	DRAWN BY ATSEE	DATE 2003/10/08	TITLE MGRID, SHROUDED HEADER VERTICAL, W/VOID(S)	MOLEX INCORPORATED		MATERIAL NO. SKTOH
DRAFT WHERE APPLICABLE MUST REMAIN WITHIN DIMENSIONS				ANGULAR ± 3 °		SEE TABLE		SD-87831-019		SHEET NO. 1 OF 1	

id\_frame\_A3\_P\_AM\_T Rev. E 2006/04/15

9 8 7 6 5 4 3 2 1

- NOTES:
- MATERIAL :  
HOUSING : 30% GF., NYLON 46, UL94V-0, COLOR BLACK.  
PIN : 0.50MM SQ.PHOSPHOR BRONZE.
  - PRODUCT SPECIFICATION PS-87831-027 APPLIES.
  - PLATING :  
0.76um/30uin GOLD IN CONTACT AREA AND 1.88um/75uin MIN. TIN IN SOLDER TAIL AREA OVER 1.27um/50uin MIN. NICKEL OVERALL.
  - THIS HEADER MATES WITH MOLEX :  
a) CRIMP RECEPTACLE HOUSING, 51110 SERIES WITH CRIMP TERMINAL, 50394 SERIES.  
b) 2MM MILLIGRID DUAL ROW IDT, 87568 SERIES.
  - PARTS TO BE PACKED IN TUBE WITH MOISTURE BARRIER BAG.