



Product Change Notification

TE Connectivity

Product Change Notification: P-22-022472

PCN Date: 05-APR-22

TE would like to inform you of the following change(s) to the listed TE Connectivity Product. In case of any further questions about this change(s), please contact your TE Connectivity Sales Engineer. Affected part, drawing and/or specification numbers are listed on the attached sheet(s).

General Product Description:
FFC CONNECTORS

Description of Changes				
Changing resin to improve overall material performance				
material performance				
	Units	Condition	Current material	New material
Tensile Strength @ Yield	MPa	ISO 527	60	85
Elongation @ Yield	%	ISO 527	5.2	12
Flexural Strength	MPa	ISO 178	90	125
Flexural Modulus	MPa	ISO 178	3000	3800
Heat Deflection Temperature	°C	ISO 75	186	237
Other attachments: Appearance				

Reason for Changes:	
Product improvement.TE decided to use a new material that has better over all material performance than the previous. See attached image	
Estimated Dates:	
Last Order Date (Obsolete Parts Only):	First Date To Ship (Changed Parts Only):
	13-APR-2022
Last Ship Date (Obsolete Parts Only):	Last Date for Mixed Shipments: (Changed Parts Only):
	No Mixed Shipments

Part Number(s) being Modified:

Part Number	Part Discontinued per PCN	Customer Drawing	Customer Part Number	Alias Part Number(s)	Substitute Part Number	Substitute Alias Part Number(s)	Description Of Difference
1888292-9	NO						

Part Number(s) being Modified:

Part Number	Part Discontinued per PCN	Customer Drawing	Customer Part Number	Alias Part Number(s)	Substitute Part Number	Substitute Alias Part Number(s)	Description Of Difference
1888292-9	NO						

Description : Trial new resin no.1364758-4 with component part no. 1364758-4

Mold No : N/A

Part No : 1364758-4

Part Name : HOUSING, LATCHING HEADER, SINGLE ROW, FLEXPAC

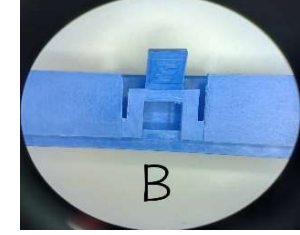
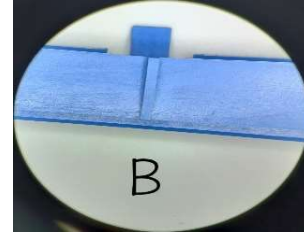
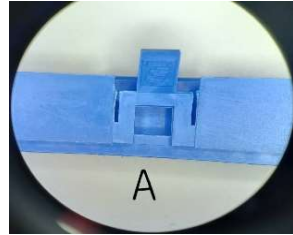
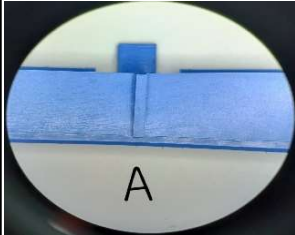
Cavity No : 2/2 cavity (A, B)

Result : compare the color shade between old and new resin

old resin is light blue

new resin is dark blue

Picture : Old resin



Picture : New resin

