

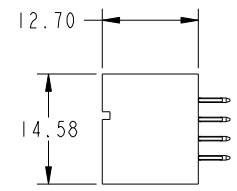
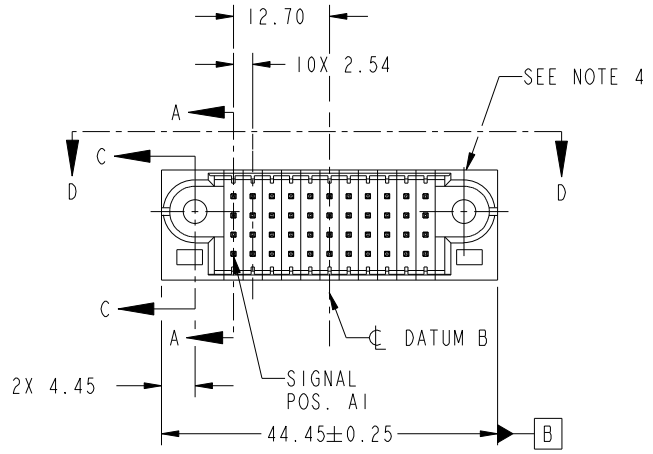
1

2

3

4

PRODUCT NO. 51952-216-- NOTE ③	ROWS D C B A	SIGNAL												
		E1	1	2	3	4	5	6	7	8	9	10	11	E2
		K	K	K	G	K	G	K	G	K	G	K	G	K
		G	G	K	K	K	K	G	K	K	K	G	K	G
		K	K	K	G	K	G	K	G	G	G	K	G	K
		K	G	K	K	K	K	G	K	K	K	K	G	K



Copyright FCI.

CODE	DIM "M" MATING LENGTH	CONTACT TYPE
K	[5.59]	SIGNAL
G	[6.86]	SIGNAL

spec ref	See Notes			dr	Weller Luo	2012-06-07	projection 	MM 	size	A4	scale	1:1
tolerance std	TOLERANCES UNLESS OTHERWISE SPECIFIED			eng	XQ Wang	2012-06-07			ecn no	rel level	Released	
See Notes				chr	PM ZHENG	2012-06-07						
surface	linear	0.X	±0.50	appr	PM ZHENG	2012-06-07	product family	PwrBlade	rev	A		
		0.XX	±0.25				title	44S	dwg no	51952-216		
		0.XXX	±0.10								cat. no.	-
	angular	0°	±2°	www.fci.com			Product - Customer Drw		sheet 1 of 4			

Prod File - REV C - 2009-06-09

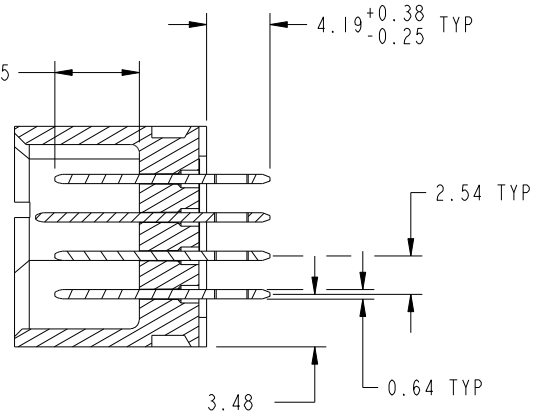
2

3

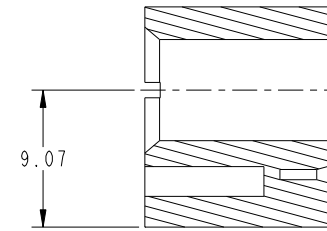
4

PRODUCT NUMBER  
51952-216--  
NOTE 3

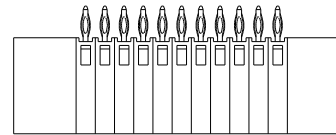
DIM "M" ±0.25



SECTION A-A  
SCALE 2:1



SECTION C-C  
SCALE 2:1



SECTION D-D

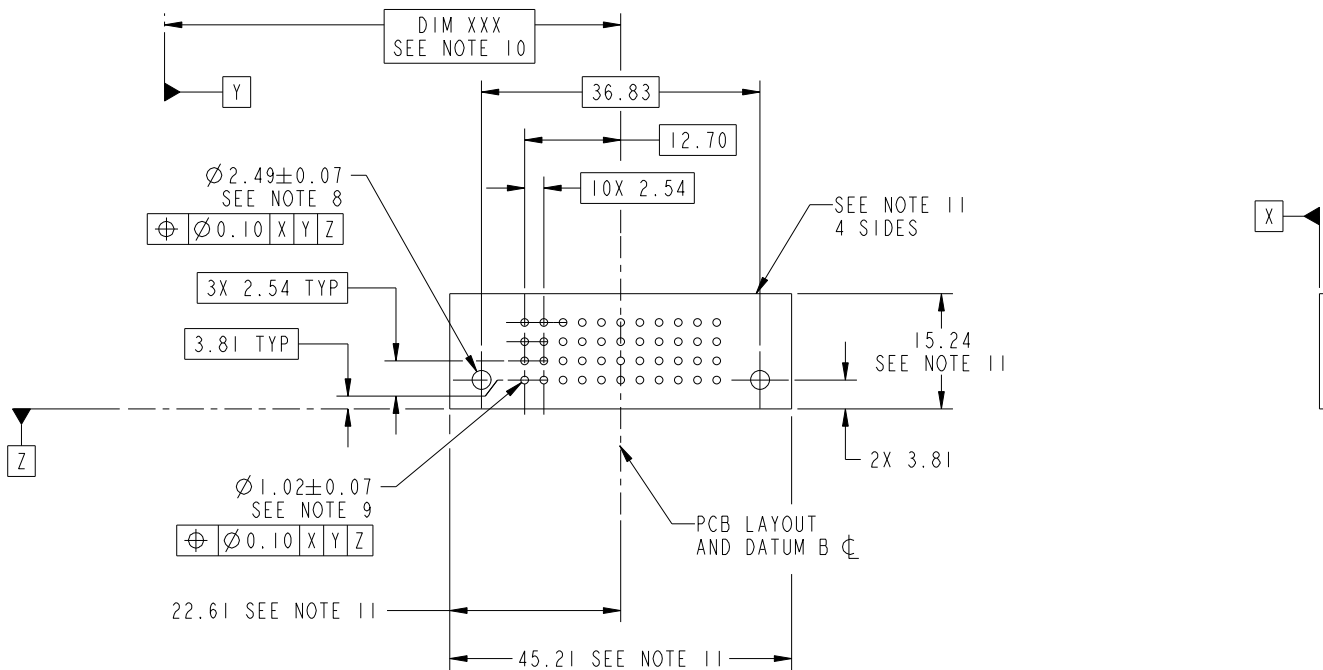
dr	Weller Luo	2012-06-07	projection 	MM 	size	A4	scale	1:1			
eng	XQ Wang	2012-06-07			ecn no	*					
chr	PM ZHENG	2012-06-07			product family	PwrBlade	rel level	Released			
appr	PM ZHENG	2012-06-07	FCj		title	44S VERTICAL PRESS-FIT HEADER		dwg no	51952-216	rev	A
www.fci.com		cat. no.	-		Product - Customer Drw			sheet 2 of 4			



Copyright FCI.

PRODUCT NUMBER

51952-216\_\_  
NOTE 3



RECOMMENDED PCB LAYOUT

dr	Weller Luo	2012-06-07	projection 	MM ←————→	size	A4	scale	1:1
eng	XQ Wang	2012-06-07			ecn no	*		
chr	PM ZHENG	2012-06-07			rel level	Released		
appr	PM ZHENG	2012-06-07	product family	PwrBlade	rev	A		
	title	44S	dwg no	51952-216	sheet	3 of 4		
www.fci.com	cat. no.	-	Product - Customer Drw					

PRODUCT NUMBER

51952-216\_\_  
NOTE 3

NOTES:

1. DIMENSIONS AND TOLERANCES ARE IN ACCORDANCE WITH ASME Y14.5M, 1994 UNLESS OTHERWISE SPECIFIED.

CONNECTOR NOTES:

- ② HOUSING MATERIAL: UL 94 V-0 GLASS FILLED HIGH-TEMP THERMOPLASTIC  
POWER CONTACT MATERIAL: COPPER ALLOY  
SIGNAL PIN MATERIAL: COPPER ALLOY
  - 3. SEE ITEM 3 & 4 IN PRINT 10064183 FOR PLATING SPEC OF 51952-216 AND 51952-216LF RESPECTIVELY.
  - ④ MANUFACTURER'S NAME, DATE CODE AND OPTIONAL P/N TO APPEAR ON THIS SURFACE. THE P/N CAN BE OMITTED IF THERE IS NOT ENOUGH SPACE ON THIS SURFACE.
  - 5. PRODUCT SPECIFICATION GS-12-149.  
APPLICATION SPECIFICATION BUS-20-067.
  - 6. PACKAGED IN TRAYS.
- PCB NOTES:
- 7. ALL HOLE DIAMETERS ARE FINISHED HOLE SIZE.
  - 8. MOUNTING HOLES, WHERE APPLICABLE, ARE UNPLATED.
  - ⑨  $\varnothing 1.151 \pm 0.025$  DRILLED HOLES PLATED WITH 0.008 MIN SnPb OR Sn OVER .001 [0.03] TO 0.08 Cu PLATING TO ACHIEVE  $\varnothing 1.02 \pm 0.07$  HOLE.
  - ⑩ "DIM XXX" TO BE DETERMINED BY THE CUSTOMER.
  - ⑪ CONNECTOR KEEP-OUT ZONE.
  - 12. FOR PRESS FIT APPLICATION USE FCI CAM TOOL 430169-XXX.



Copyright FCI.

dr	Weller Luo	2012-06-07	projection 	MM 	size	A4	scale	1:1		
eng	XQ Wang	2012-06-07			ecn no	*				
chr	PM ZHENG	2012-06-07			product family	PwrBlade	rel level	Released		
appr	PM ZHENG	2012-06-07			title	44S VERTICAL PRESS-FIT HEADER	dwg no	51952-216	rev	A
www.fci.com		cat. no.	-	Product - Customer Drw			sheet 4 of 4			