

DWG. NO.
SD-57990-001

SIMILAR ITEM

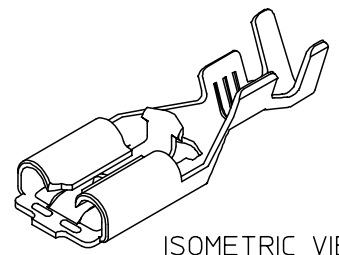
PROJECT NO.

B

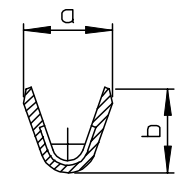
DO NOT SCALE DRAWING
DIMENSION IN METRIC

0.5 MAX.
CUT OFF TAB

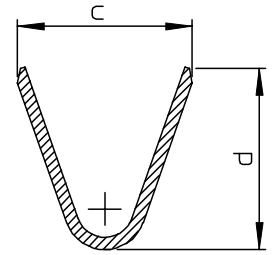
PITCH=18.8



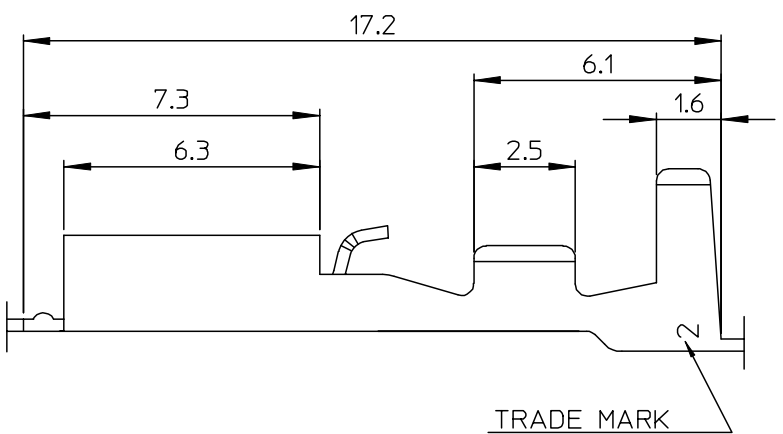
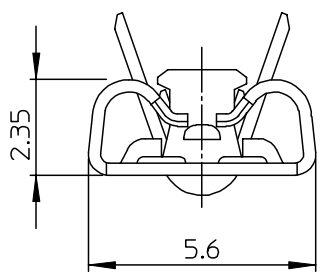
ISOMETRIC VIEW



SECTION A-A



SECTION B-B



TRADE MARK
(MK2)

MATERIAL NO.	ENG NO.	DIMENSION				WIRE RANGE
		a	b	c	d	
579909710	57990-9710	2.3	2.1	4.3	4.5	AWG 26 - 20
579909810	57990-9810	3.5	3.3	5.8	5.2	AWG 20 - 14

- NOTES
1. MATERIAL : BRASS, 0.3mm THICKNESS
 2. FINISH : PRE-TIN PLATED
(1.0MICROMETER MIN. TIN OVER 0.3MICROMETER MIN. COPPER)
 3. MATING TAB : 0.5mm THICKNESS, 4.75mm WIDTH

NEW RELEASED ECN NO. KR2003-0193 DRWN: C.B.CHIN 03/01/20 CHK: W.Y.YANG APPR: C.W.LEE	DESCRIPTION	QUALITY SYMBOLS	GENERAL TOLERANCES: (UNLESS SPECIFIED)		SCALE 8:1	DESIGN UNITS <input checked="" type="checkbox"/> mm <input type="checkbox"/> INCH	<input checked="" type="checkbox"/> THIRD ANGLE <input type="checkbox"/> FIRST ANGLE PROJECTION	DIMENSIONS: <input type="checkbox"/> mm <input type="checkbox"/> INCH <input checked="" type="checkbox"/> mm ONLY		SHT	REV
		MAJOR ▽ = 0	4 PLACES	±0.	±-	DRAWN BY & DATE C.B.CHIN 02/09/09	TITLE: .187 MP-LOCK REC' TERMINAL FOR SLEEVE				
		CRITICAL ∇ = 0	3 PLACES	±0.	±-	CHECKED BY & DATE W.Y.YANG 02/09/09	APPROVED BY & DATE C.W.LEE 02/09/09				
			2 PLACES	±0.20	±-	CAD FILENAME S57990AA.MI		MATERIAL NO. SEE TABLE	DRAWING NO. SD-57990-001	SHEET NO. 1 OF 1	
A	REV	ANGULAR: ± 1 °		DRAFT WHERE APPLICABLE MUST REMAIN WITHIN DIMENSIONS		THIS DRAWING CONTAINS INFORMATION THAT IS PROPRIETARY TO MOLEX INCORPORATED AND SHOULD NOT BE USED WITHOUT WRITTEN PERMISSION.					SIZE B