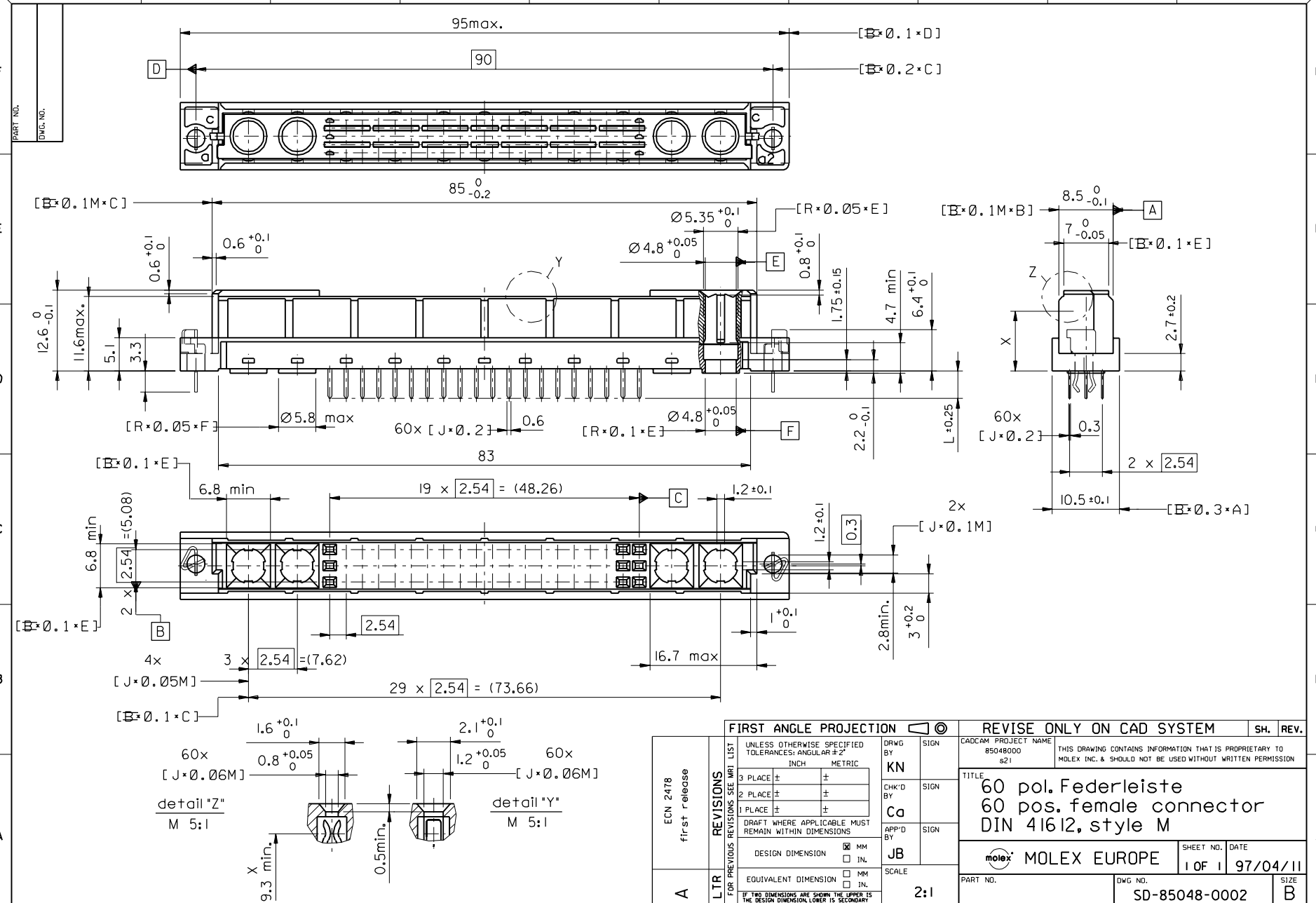


PART NO.
DWG. NO.



View on mating side

○		A	A	A	A	A	A	A	A	A	A	A	A	A	A	
○																
○		A	A	A	A	A	A	A	A	A	A	A	A	A	A	

1 2 3 4 5 6 7 8 9 10 11 12 13 14 15 16 17 18 19 20 21 22 23 24 25 26 27 28 29 30 31 32 33 34 35 36 37 38 39 40 41 42 43 44 45 46 47 48 49 50 51 52 53 54 55 56 57 58 59 60

A = 40 standard contacts L=4,5

Marking	Standard
Performance level	G2/0 = Contact area level2 / Termination tin
Flux proof	no
Fixing clip	no
Dimensions	SD-85048-0002 sht.1
Technical Data	PS-85042-0001

A	G2/0	c7-26	c7-26
Contact symbol	Perform. level	Contact position number	

ECN 2478 first release	REVISIONS		FOR PREVIOUS REVISIONS SEE MRI LIST		REVISE ONLY ON CAD SYSTEM	SH. REV.
	LTR					
UNLESS OTHERWISE SPECIFIED TOLERANCES: ANGULAR ± 2° INCH METRIC		DRWG BY	KN	SIGN	CAD/CAM PROJECT NAME	THIS DRAWING CONTAINS PROPRIETARY TO MOLEX INC. & SHOULD NOT BE USED WITHOUT WRITTEN PERMISSION
3 PLACE ± .	±	CHK'D BY	Ca	SIGN	s8504800 s91	
2 PLACE ± .	±	APP'D BY	JB	SIGN		TITLE 60 pos. female connector acc. DIN 41612, style M contacts arrangement
1 PLACE ± .	±	SCALE				
DRAFT WHERE APPLICABLE MUST REMAIN WITHIN DIMENSIONS		DESIGN DIMENSION	<input type="checkbox"/> MM <input type="checkbox"/> IN.		SHEET NO.	DATE
EQUIVALENT DIMENSION		<input type="checkbox"/> MM <input type="checkbox"/> IN.			1 OF 1	97/05/26
IF TWO DIMENSIONS ARE SHOWN, THE UPPER IS THE DESIGN DIMENSION, LOWER IS SECONDARY					MOLEX EUROPE	DWG NO.
					85048-0098	SD-85048-0098
					PART NO.	SIZE
						A