



# Product Change Notification

## TE Connectivity

Product Change Notification: PCN-21-120674

PCN Date: 24-NOV-21

TE would like to inform you of the following change(s) to the listed TE Connectivity Product. In case of any further questions about this change(s), please contact your TE Connectivity Sales Engineer. Affected part, drawing and/or specification numbers are listed on the attached sheet(s).

**General Product Description:**

The listed part numbers are being discontinued and no longer available. Please consult with your local customer sales r

**Description of Changes**

The listed part numbers are being discontinued and no longer available. Please consult with your local customer sales representative for further details. TE will keep active just PN 926309-3. PLEASE, IGNORE PCN-21-116215 BECAUSE IT WAS CREATED BY MISTAKE!

**Other attachments:**

[Customer Drawing](#)

**Reason for Changes:**

**PCN Attributes:**

<b>Product Category:</b>	<b>Kind of Change:</b>
Connector Housings	Status Change
<b>Change Feature:</b>	<b>Potential Customer Impact:</b>
Discontinuance	No Customer Impact
<b>Remarks:</b>	

**Estimated Dates:**

<b>Last Order Date (Obsolete Parts Only):</b>	<b>First Ship Date of Changed Items (Changed Parts Only):</b>
22-MAY-2022	
<b>Last Ship Date of Changed Items (Obsolete Parts Only):</b>	<b>Last Date for Mixed Shipments: (Changed Parts Only):</b>
22-MAY-2022	No Mixed Shipments
<b>Effectivity Date:</b>	<b>Date of First Samples:</b>

**Part Number(s) being Modified:**

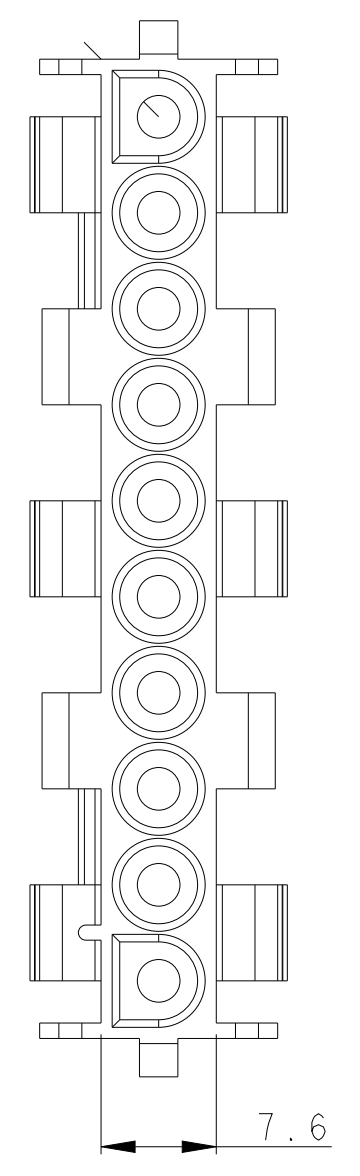
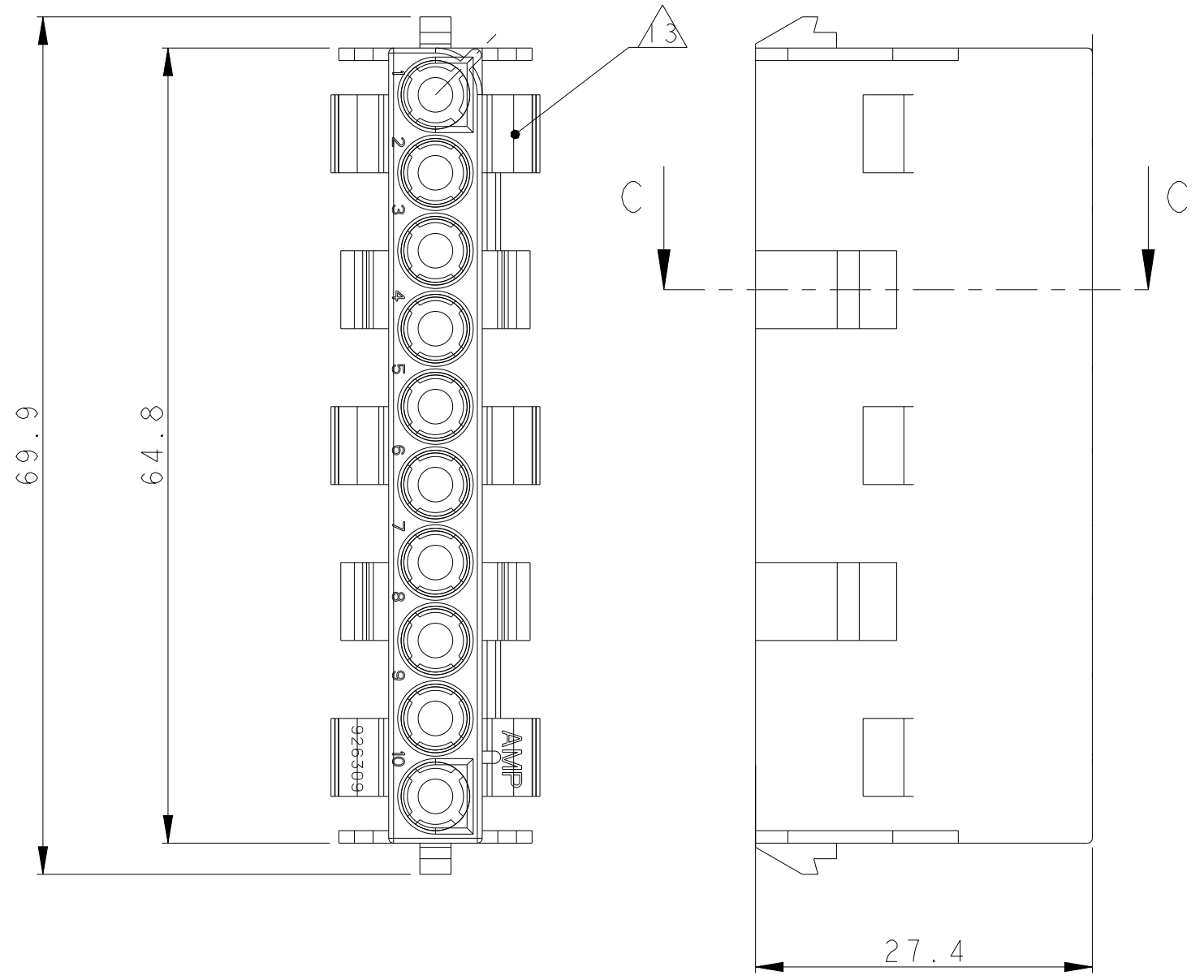
Part Number	Part Discontinued per PCN	Customer Drawing	Customer Part Number	Alias Part Number(s)	Substitute Part Number	Substitute Alias Part Number(s)	Description Of Difference
<a href="#">926309-1</a>	YES				926309-3		V0 resin

**Part Number(s) being Modified:**

Part Number	Part Discontinued per PCN	Customer Drawing	Customer Part Number	Alias Part Number(s)	Substitute Part Number	Substitute Alias Part Number(s)	Description Of Difference
<a href="#">926309-1</a>	YES				926309-3		V0 resin

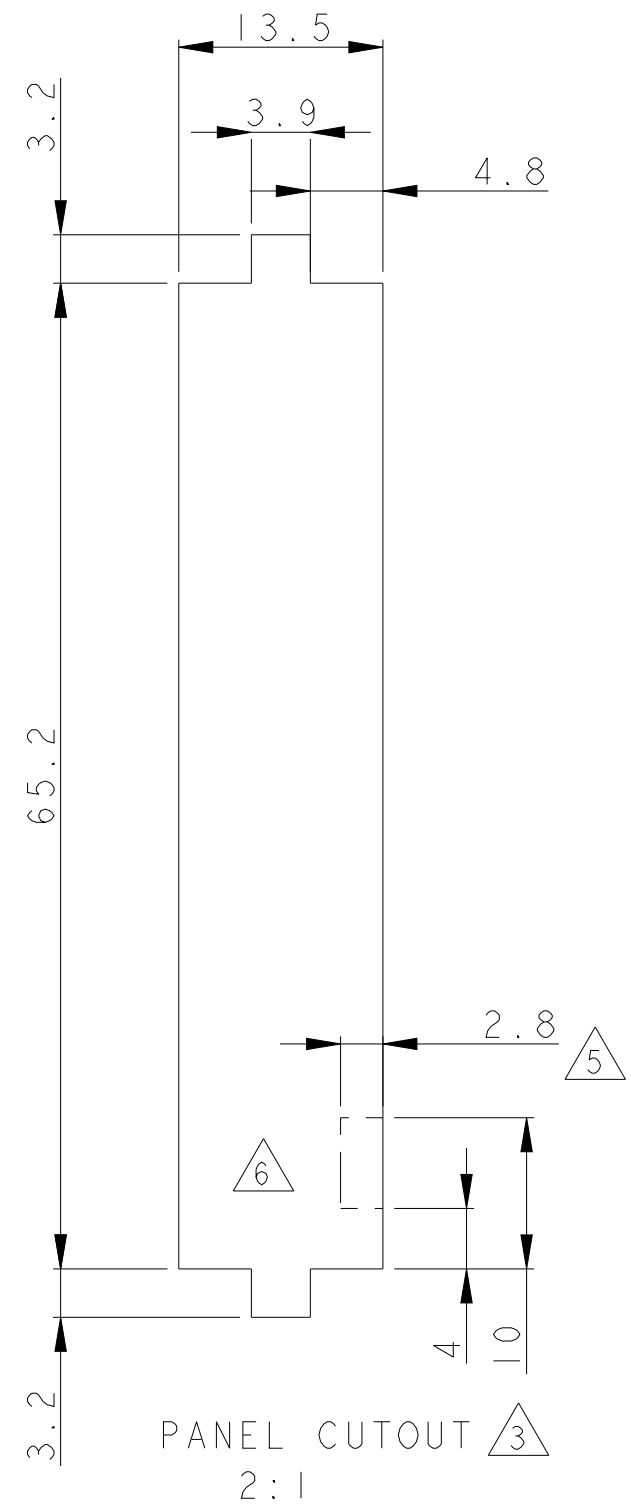
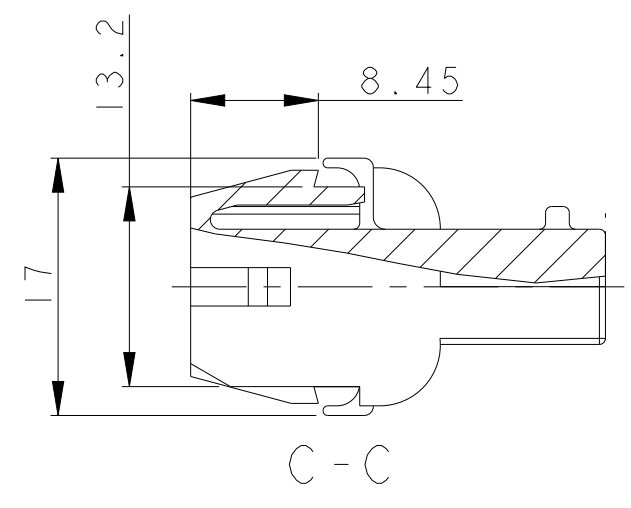
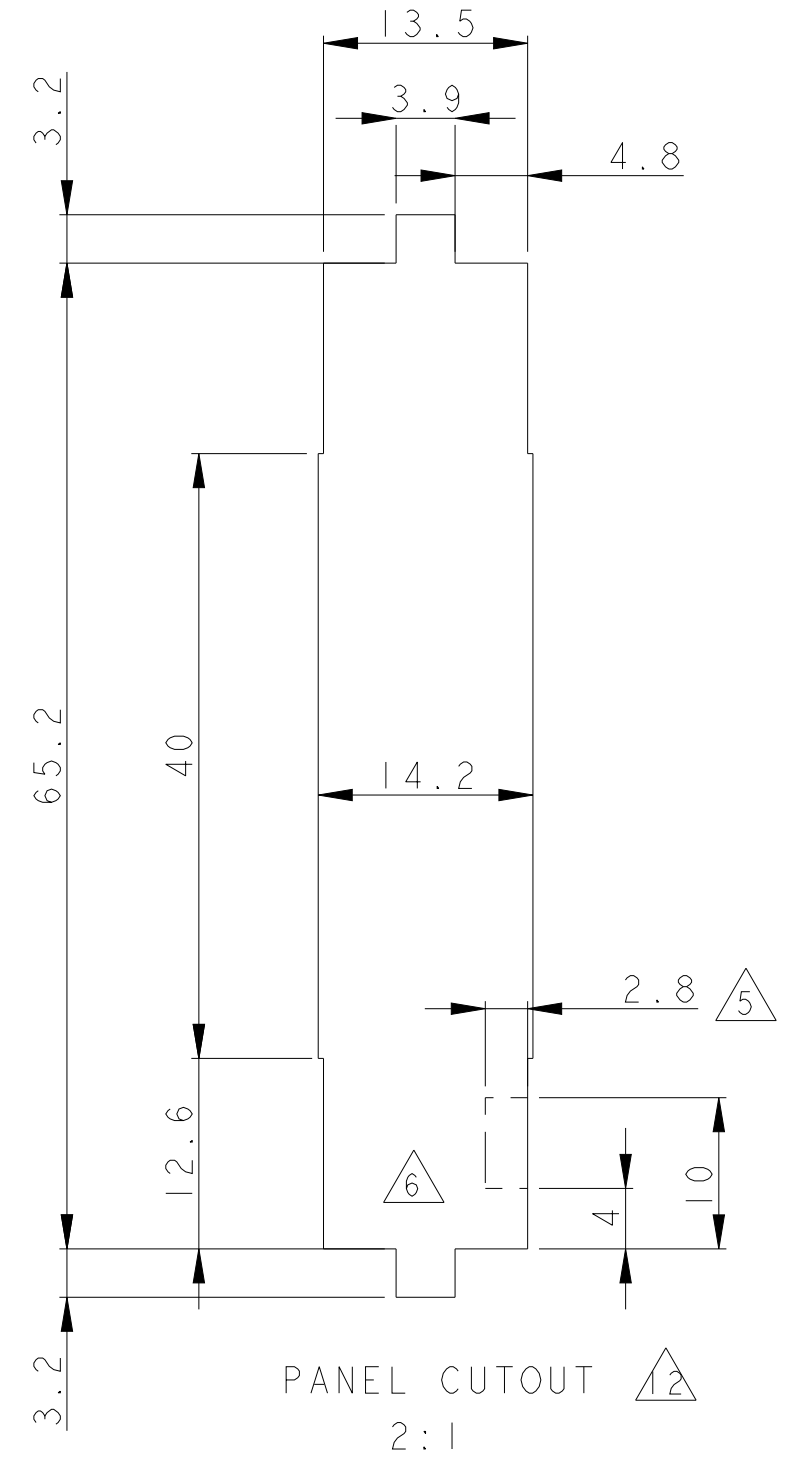
THIS DRAWING IS UNPUBLISHED. RELEASED FOR PUBLICATION  
 © COPYRIGHT copyright.d8Te- ALL RIGHTS RESERVED.

REVISIONS				
P	LTR	DESCRIPTION	DATE	APVD
J3		REVISED PER ECR-17-014951	16OCT2017	BDA KR
J4		REVISED PER ECR-21-116188	05NOV2021	SS VS
K		REVISED PER ECR-21-120470	12NOV2021	SS VS



- 1 SUITABLE FOR UMNL PIN AND SOCKET CONTACTS
- 2 SUITABLE FOR UMNL PLUG HOUSING PN 926302
- 3 RECOMMENDED PLATE THICKNESS 0.75-2.3mm
- 4 HOUSING TIGHT CLOSURE ARE INTRODUCED INTO PUNCHING DIRECTION
- 5 ENCRYPTED FOR INSERTION OF THE HOUSING
- 6 POSITION OF THE CHAMBER I AT ENCRYPTED USING THE HOUSING
- 7 NEW MATERIAL (PHOSPHORUS AND HALOGEN FREE)
- 8 BULK IN BAG AND SHIPPING CARTON ON 973057-2
- 9 GLOW-WIRE TEST 750°C(WITHOUT FLAME) ACCORDING TO IEC60335-1 EDITION 6/2001
- 10 PRELIMINARY PART NOT RELEASED FOR PRODUCTION
- 11 COLOR OF HOUSINGS MAY RANGE FROM CLEAR TO GREEN OR YELLOW DUE TO HYGROSCOPIC NATURE OF RESIN. HOWEVER IT DOESN'T AFFECT THE FORM. FIT AND FUNCTION OF THE PRODUCT.
- 12 ADD PANEL CUTOUT ONLY FOR LASER CUT PROCESS.
- 13 CSA CERTIFICATION LOGO LOCATED APPROXIMATELY AS SHOWN.
- 14 DIMENSIONS SHOWN REPRESENT PRODUCT IN DRY, AS MOLDED, CONDITION. ADDITIONAL 2% GROWTH DUE TO SUBSEQUENT MOISTURE ABSORPTION MAY OCCUR AND SHOULD BE ACCOUNTED FOR.

PANEL CUTOUT ONLY USE FOR LASER PROCESS



OBSOLETE	COLOUR	MATERIAL	PART NUMBER
	NATURAL	PA66 UL94-V0 GWT 750 °C	926309-7
	NATURAL	PA6. UL94-V0	926309-6
	NATURAL	PA66 UL94-V2	926309-5
	WHITE	PA6.6 UL94-V0	926309-4
	NATURAL	VYDYNE ECO315J	926309-3
	BLACK	PA6.6 UL94-V0	926309-2
	NATURAL	PA66 UL94-V2	926309-1
	COLOUR	MATERIAL	PART NUMBER

THIS DRAWING IS A CONTROLLED DOCUMENT.

DWN MGT	11DEC2012	TE Connectivity
CHK R.P	11DEC2012	
APVD R.P	11DEC2012	
DIMENSIONS: mm TOLERANCES UNLESS OTHERWISE SPECIFIED: 0 PLC ±0.2 1 PLC ±0.2 2 PLC ±0.2 3 PLC ± 4 PLC ± ANGLES ± FINISH -		NAME: UMNL 10 WAY CAP HOUSING SIZE: A2 CAGE CODE: C-926309 DRAWING NO: C-926309 RESTRICTED TO: - SCALE: 1:1 SHEET: 1 OF 1 REV: K
MATERIAL REFER TABLE	-	CUSTOMER DRAWING