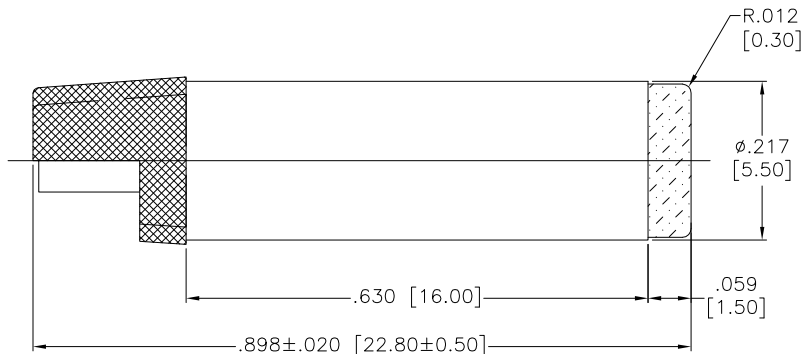
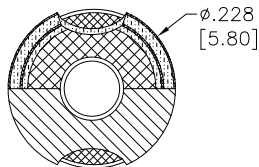
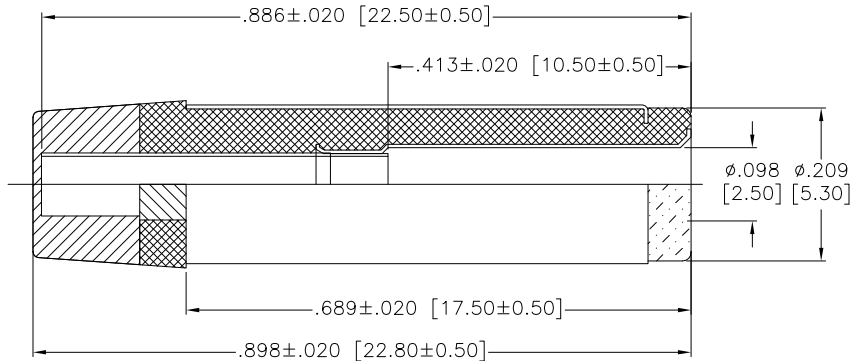


APPROVED: _____
 DATE: _____ TITLE: _____

Rev	AWO #	Description	Date	Appr
-		RELEASED	4/26/16	



SPECIFICATIONS:

Material:
 Outer Tube: Brass
 Center Pin: Brass
 Dielectric: ABS

Electrical:
 Operating voltage: 12 VDC
 Current rating: 2 Amps

Contact resistance: 30 mohms mas
 Insulation resistance: 100 Mohms min @ 500 VDC
 Dielectric withstanding voltage: 500 VAC, 0.5mA for 1 minute

Environmental:
 Lead free, RoHS compliant.



UNLESS OTHERWISE SPECIFIED
 ALL DIMENSIONS ARE INCHES [MM]
 TOLERANCES: EXCEPT AS NOTED
 INCHES HOLES
 .X ±.10 Ø.X ±.10
 .XX ±.020 Ø.XX ±.015
 .XXX ±.015 Ø.XXX ±.010

ADAM TECH

909 Rahway Avenue, Union, NJ 07083
 Phone: 908-687-5000 Fax: 908-687-5710

TITLE		
DC PLUG 5.5X2.5X22.5MM		
SIZE	PART NO.	REV.
X	ADP-.098/.217/.689-M	-
REF:	S00118C	SCALE: NTS SHEET 1 OF 1

APPROVALS		DATE
DRAWN	AY	4/26/16
CHECKED	MY	4/26/16
APPROVED		