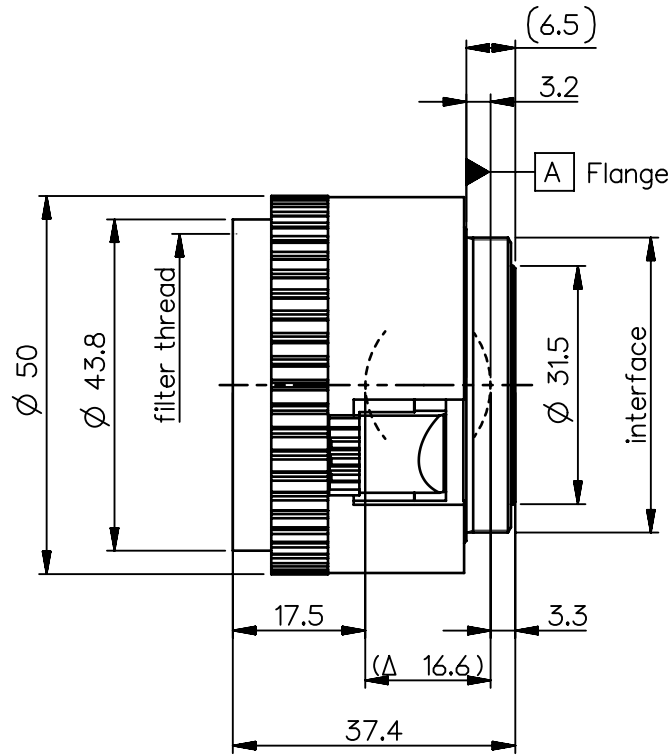
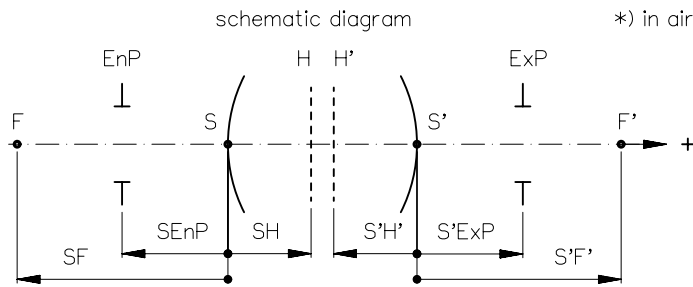


order number	lens name
0701-401-000-40	Rodagon 4/35



<b>Specification</b>		ON	7404-9001
image circle max. (mm)	40	working distance (mm)	184 - 1178
focal length $f'$ (mm) *	35.1	interface	M39 x1/26" (Leica)
magnification $\beta'$ [range]	-0.2 ... -0.03	filter thread	M40.5 x0.5
spectral range $\lambda$ (nm)	400 - 750	weight (g)	85

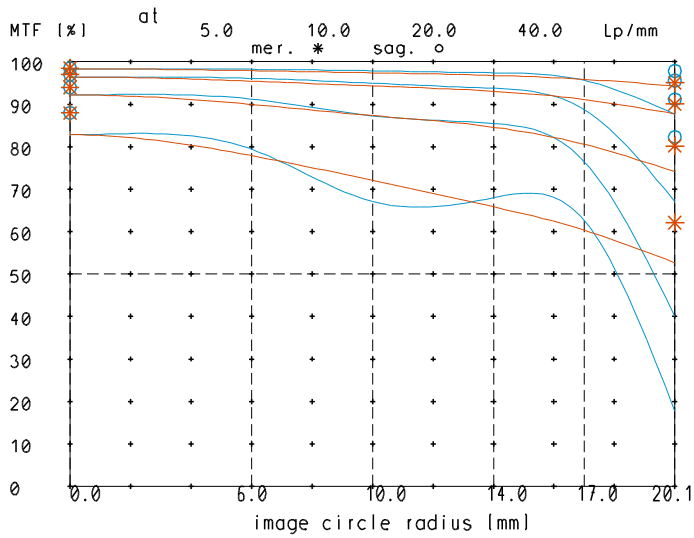


design includes CCD cover glass:		no		
SF (mm)	-26.5	f-stop	$\varnothing$ EnP	$\varnothing$ Exp
S'F' (mm) *	27.2	4	8.8	9.0
HH' (mm) *	0.11	5.6	6.3	6.4
SH (mm)	8.6	8	4.4	4.5
S'H' (mm) *	-7.9	11	3.2	3.3
SEnP (mm)	7.7	16	2.2	2.3
S'Exp (mm) *	-8.8			

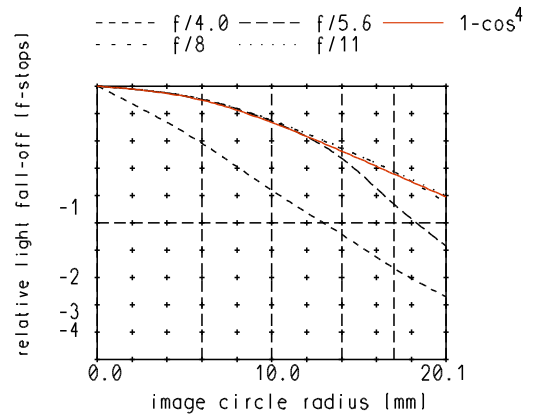
<b>NX</b> PROTECTIVE NOTE "DIN ISO 16016" TO BE OBSERVED	EU-D	AL-T1A	US-D	US-ML	not export controlled			
	REV	ECC	DATE	APPROVED	PDM Status	Freigabe	Q Internal Use	
	a	Neuausg	08.06.15	K-Jancec	SCALE	1:1		
					MATERIAL			
				GENERAL TOLERANCE OF DIMENSION, FORM, POS. ISO 2768-mH BASIC TOLERANCING PRINCIPLE ISO 8015 TITLE <b>Rodagon 4/35</b>				
				FIRST	DATE	NAME		
				ISSUE	08.06.15	K-Jancec		
				CHKD	08.06.15	Stauder		
				DRAWING NO. <b>0701-401-100-40-0001a</b>			SHEET	1
<b>DIN A 4</b>	ALL DIMENSIONS ARE IN MM AND INCLUDE SURFACE TREATMENT						OF	1
				REPLACES				

# Rodagon\_4/35

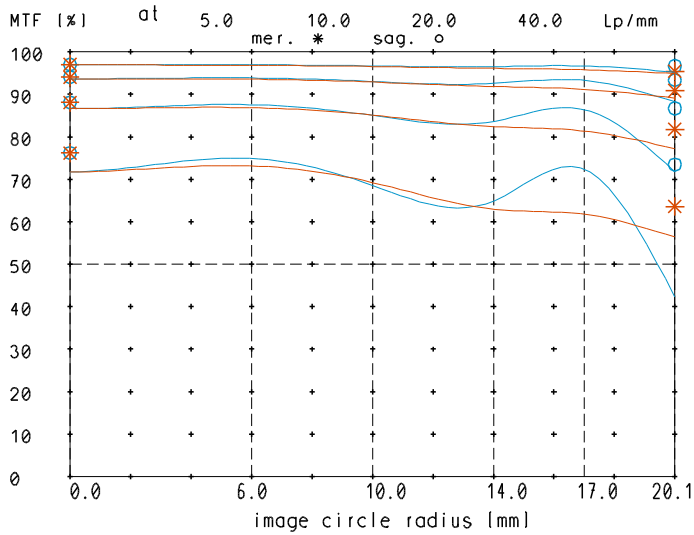
MTF at ratio -0.05 f/ 4.0



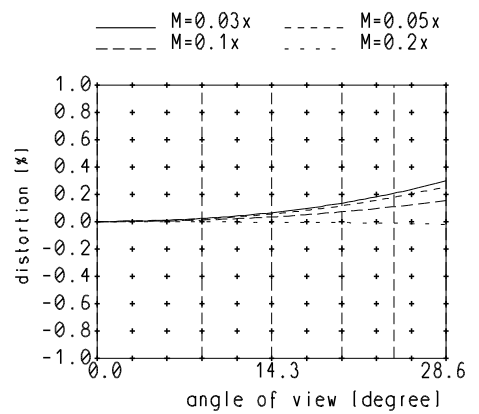
relative light fall-off at ratio -0.05



MTF at ratio -0.05 f/ 8

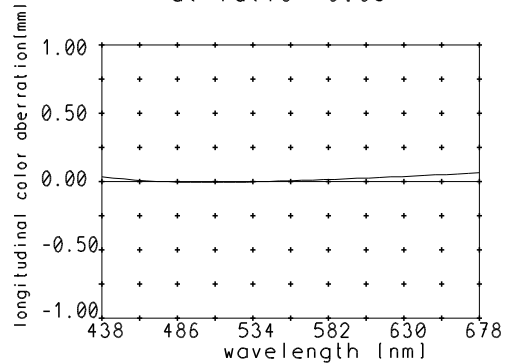


Distortion at ratio 0.03x to 0.2x



— sagittal. o Diffraction limited value  
 — meridional \* Diffraction limited value

Longitudinal color aberration at ratio -0.05



Named frequencies (line pairs/mm) in modular transfer function (MTF) as well as diagrams of relative light fall-off, distortion and longitudinal color aberration refer to film plane.