

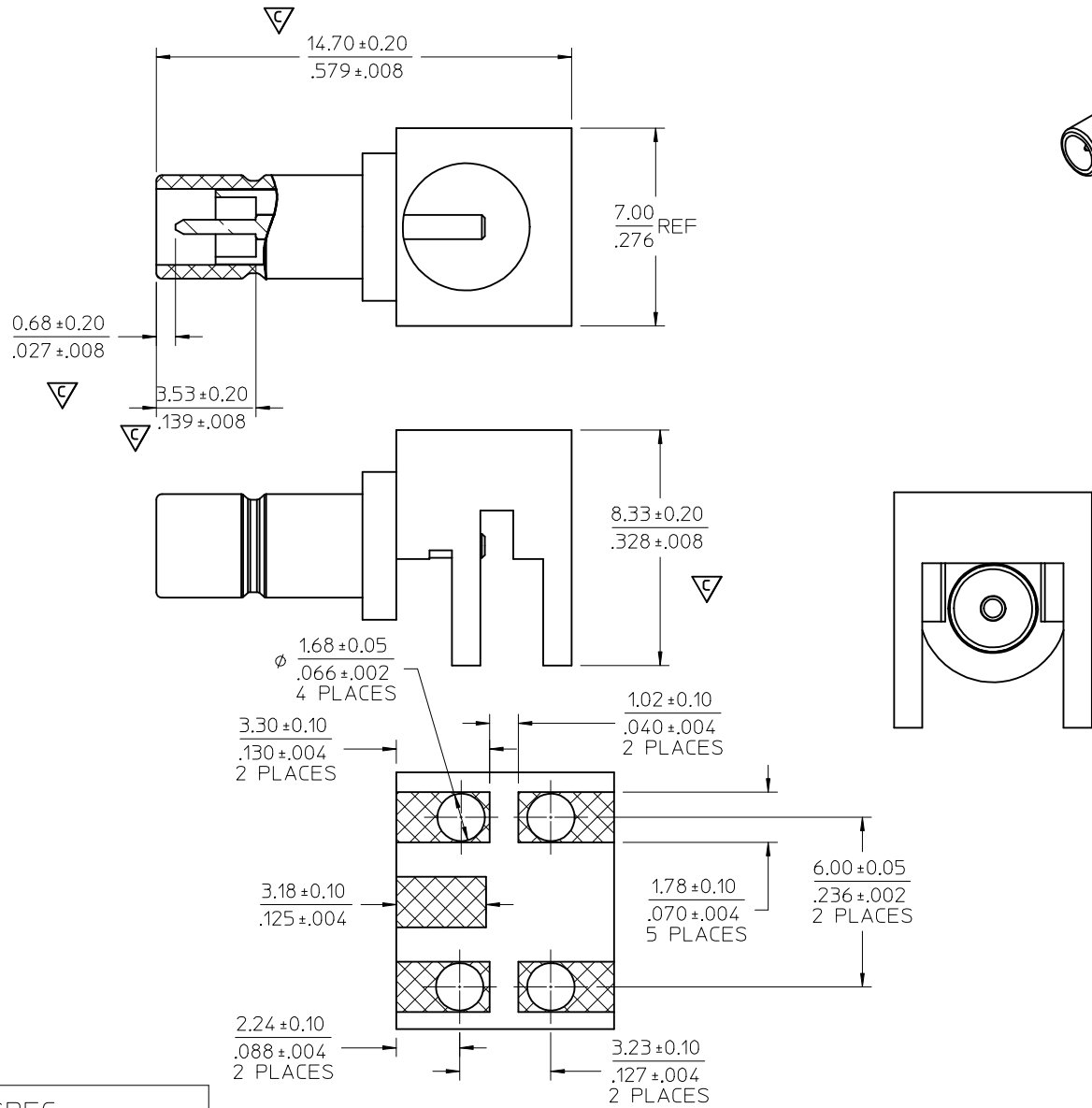
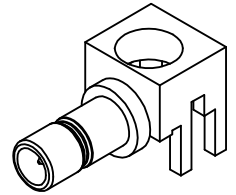
MATERIALS AND FINISHES

BODY ZINC ALLOY
PLATED TIN

CENTER CONTACT BRASS
PLATED GOLD

INSULATOR TEFLON

PACKAGING BY TRAY



PART # 73396-0420

RECOMMENDED PCB LAYOUT

PS-73598-0099	PRODUCT SPEC
SPECIFICATION	DESCRIPTION

CHG: REDREW TO SHOW REVISED COMPONENTS EC NO: URF2007-0502 DRWN: FLAHERTY 2007/06/11 CHKD: SHAH 2007/06/11 APPR: WIENER 2007/06/11 REV: B3	QUALITY SYMBOLS ▽=0 ▽=0	GENERAL TOLERANCES (UNLESS SPECIFIED) <table border="1"> <thead> <tr> <th></th> <th>mm</th> <th>INCH</th> </tr> </thead> <tbody> <tr> <td>4 PLACES</td> <td>± .13</td> <td>± .005</td> </tr> <tr> <td>3 PLACES</td> <td>± .15</td> <td>± .006</td> </tr> <tr> <td>2 PLACES</td> <td>± 0.13</td> <td>± .005</td> </tr> <tr> <td>1 PLACE</td> <td>± 0.25</td> <td>± .010</td> </tr> </tbody> </table> ANGULAR ± 2 °		mm	INCH	4 PLACES	± .13	± .005	3 PLACES	± .15	± .006	2 PLACES	± 0.13	± .005	1 PLACE	± 0.25	± .010	DIMENSION STYLE MM/IN	SCALE DESIGN UNITS METRIC	THIRD ANGLE PROJECTION
		mm	INCH																	
	4 PLACES	± .13	± .005																	
	3 PLACES	± .15	± .006																	
2 PLACES	± 0.13	± .005																		
1 PLACE	± 0.25	± .010																		
DRAWN BY EVITA	DATE 2005/09/02	CHECKED BY KEN	DATE 2005/09/02	APPROVED BY MI SEN	DATE 2005/09/02															
MATERIAL NO. 733960420	DOCUMENT NO. SD-73396-042	TITLE SMB JACK,R/A,PCB,50 OHMS SPECIAL, EWR-3254 SMB-JR/RA/PCB	SHEET NO. 1 OF 1	MOLEX INCORPORATED																
DRAFT WHERE APPLICABLE MUST REMAIN WITHIN DIMENSIONS																				