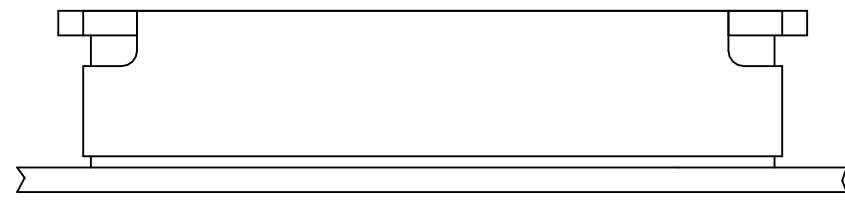


THIS DRAWING IS UNPUBLISHED. RELEASED FOR PUBLICATION
 © COPYRIGHT - By TE Connectivity ALL RIGHTS RESERVED.

REVISIONS					
P	LTR	DESCRIPTION	DATE	DWN	APVD
A5		REVISED PER ECR-23-171817	14APR2023	PS	TD

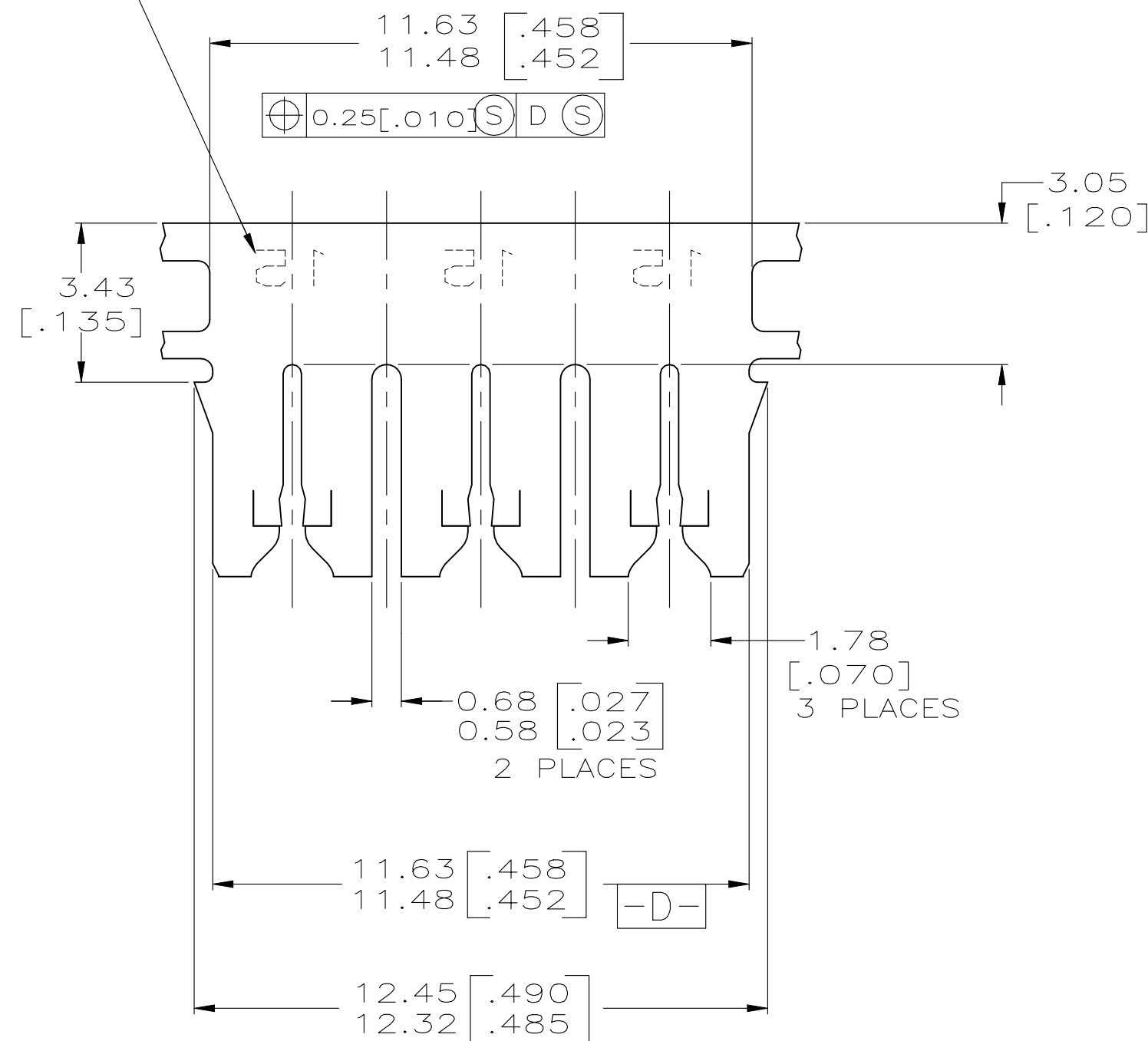
- 1 CONTINUOUS STRIP ON REELS WITH TERMINALS LOCATED ON 13.97±0.08 [.550±.003] CENTERS.
- 2 SLOT ACCEPTS 0.54-0.81mm [#23.5-#20] AWG COPPER MAGNET WIRE. 2 WIRES OF THE SAME SIZE AND TYPE PER SLOT. EXCEPT 0.64-0.81mm [#22-#20] AWG WHICH IS ONE WIRE ONLY OR SLOT ACCEPTS 0.72-0.91mm [#21-#19] AWG SINGLE ALUMINIUM MAGNET WIRE ONLY. ALUMINIUM WIRE RANGE IS APPLICABLE FOR POST TIN PLATED PART NOS ONLY
- 3 MAG-MATE APPLICATION SPEC IS 114-2046.
- 4 SLOT ACCEPT 0.85mm SINGLE COPPER WIRE.

D

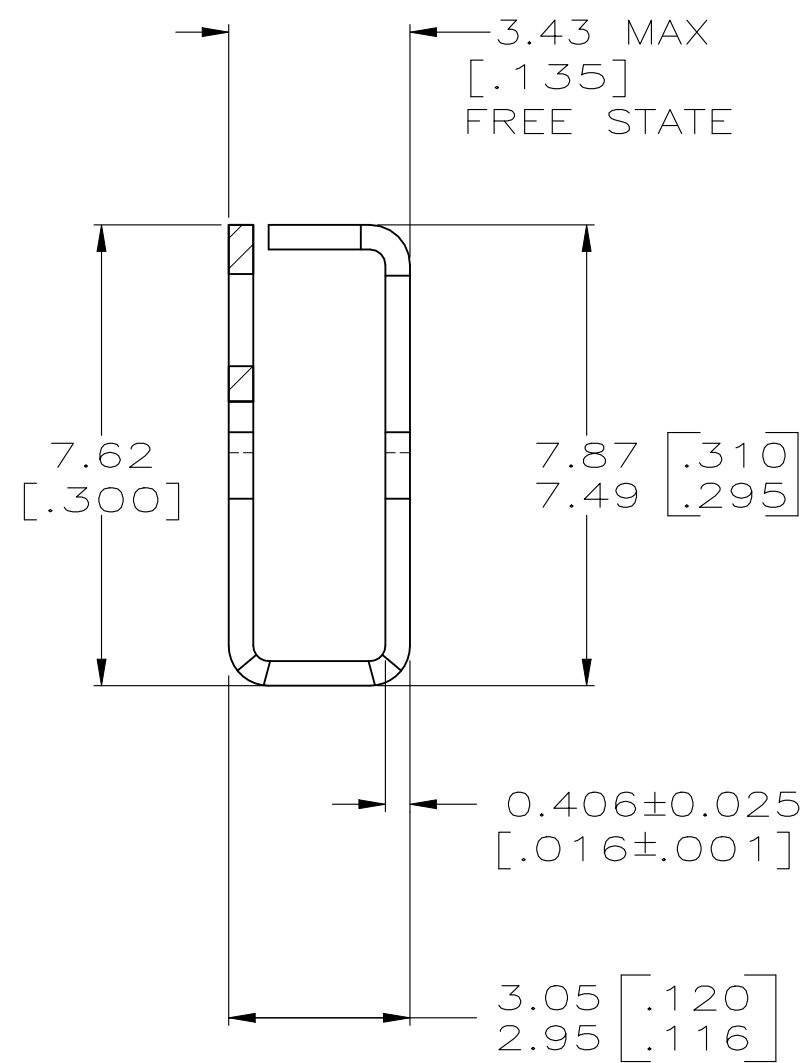


C

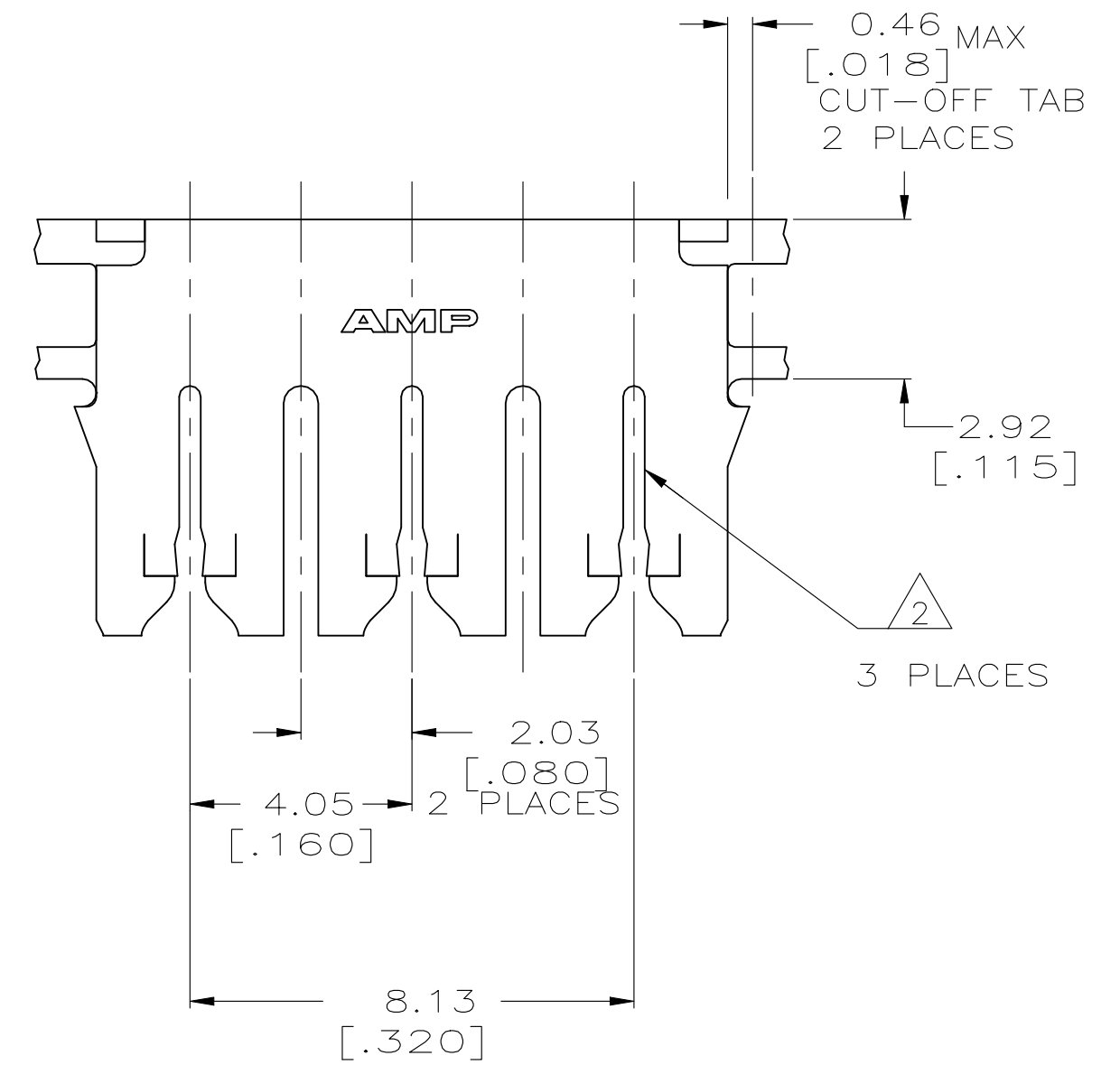
IDENTIFICATION NUMBER 15 FOR MAGNET WIRE RANGE 3 PLACES



B



A



1217853

B

A

1217853-1
PART NUMBER

THIS DRAWING IS A CONTROLLED DOCUMENT.		DWN MICHAEL S. FEHER 06JAN2003			TE Connectivity	
DIMENSIONS: mm [INCHES]		CHK KURT A. RANDOLPH 06JAN2003			NAME KURT A. RANDOLPH 06JAN2003	
TOLERANCES UNLESS OTHERWISE SPECIFIED:		APVD KURT A. RANDOLPH 06JAN2003	PRODUCT SPEC 108-2012		RESTRICTED TO	
0 PLC ± -		APPLICATION SPEC 96-1039-143		SIZE A2	CAGE CODE 00779	DRAWING NO C=1217853
1 PLC ± -		MATERIAL BRASS		WEIGHT 0	SCALE VS	SHEET 1 OF 1
2 PLC ± 0.25[.010]		FINISH TIN PLATE		CUSTOMER DRAWING		REV A5
3 PLC ± -						
4 PLC ± -						
ANGLES ± -						