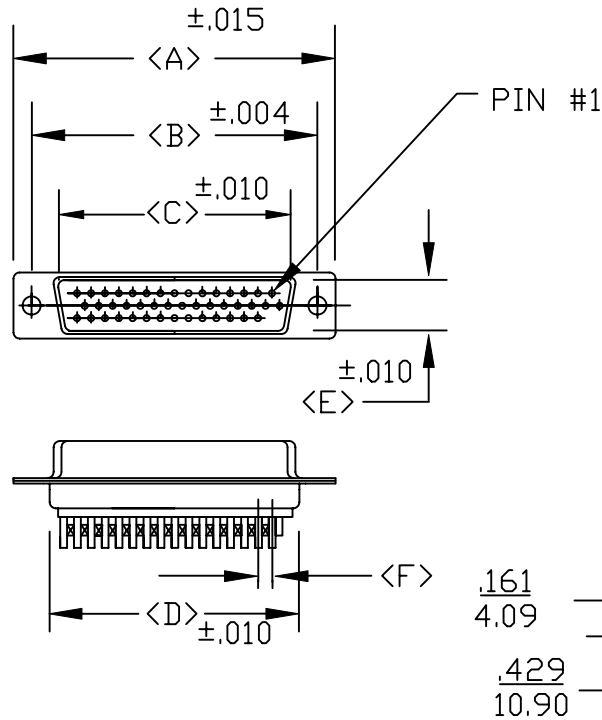
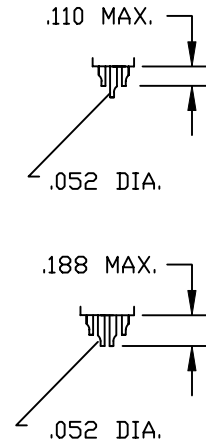


DESCRIPTION: **HIGH DENSITY FEMALE SOLDER CUP**



POS.	A	B	C	D	E	F	G
15	1.213	0.984	0.644	0.756	0.311	0.090	0.496
	30.80	24.99	16.34	19.20	7.90	2.29	12.60
26	1.541	1.312	0.966	1.091	0.311	0.090	0.496
	39.15	33.32	24.53	27.70	7.90	2.29	12.60
44	2.087	1.852	1.512	1.618	0.311	0.090	0.496
	53.00	47.04	38.40	41.10	7.90	2.29	12.60
62	2.728	2.500	2.156	2.256	0.311	0.095	0.496
	69.30	63.50	54.76	57.30	7.90	2.41	12.60
78	2.079	2.406	2.057	2.169	0.429	0.095	0.606
	52.81	61.00	52.26	55.10	10.90	2.41	15.39



180-XXX-203LXX1

SERIES _____

POSITIONS _____

015
026
044
062
078

GENDER _____

1 = MALE
2 = FEMALE

TERMINATION _____

0 = SOLDER CUP
3 = NICKEL PLATED

SHELL PLATING _____

3 = NICKEL PLATED

HARDWARE OPTIONS _____

00 = NO HARDWARE

01 = .098" 4-40 CLINCH NUT (BOARD SIDE)
02 = .250" 4-40 CLINCH NUT (BOARD SIDE)
03 = .250" 4-40 CLINCH NUT (MATING SIDE)
91 = .225" 4-40 SPACER/BOARD LOCK

PLATING OPTIONS _____

1 = GOLD FLASH

ELECTRICALS:

CURRENT RATING: 2 AMPS
 CONTACT RESISTANCE: 15 mOHMS MAX.
 INSULATOR RESISTANCE: 1000MOHMS MIN.
 VOLTAGE: 500V FOR 1 MINUTE
 TEMPERATURE: -50° TO +100°

MATERIALS:

SHELL: STEEL, NICKEL PLATED
 INSULATOR: PBT - BLACK (UL-94-VO)
 RoHS COMPLIANT

NOTE: WILL ACCEPT UP TO 24 AWG WIRE



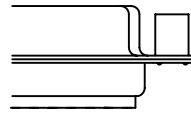
THESE DRAWINGS AND SPECIFICATIONS ARE THE PROPERTY OF NorComp AND SHALL NOT BE REPRODUCED, COPIED OR USED AS THE BASIS FOR THE MANUFACTURE OR SALE OF APPARATUS WITHOUT WRITTEN PERMISSION.

DRAWN: PAM JENKINS	DATE: 8-12-98	
CHECKED:	DATE:	
SCALE:	SHEET OF	REV 1
DWG NO. 180-XXX-203LXX1		

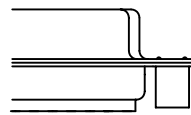
NorComp

DESCRIPTION: CLINCH NUT HARDWARE

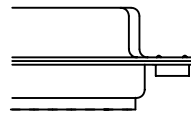
ALL CLINCH-NUTS ARE 4-40 INTERNAL THREADS



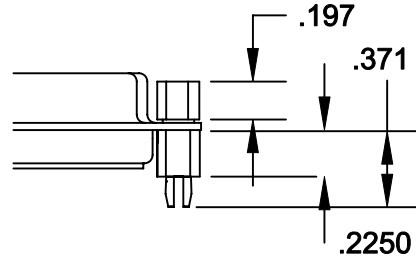
03X..... .250" (MATING SIDE) - CN8



02X250" (BOARD SIDE) - CN2



01X098" (BOARD SIDE) - CN1



91X225" (BOARD SIDE) - .197 MATING SIDE - CN10/SFS0440

NOTE: 4-40 FEMALE SCREW LOCK IS REMOVABLE



THESE DRAWINGS AND SPECIFICATIONS ARE THE PROPERTY OF NorComp AND SHALL NOT BE REPRODUCED, COPIED OR USED AS THE BASIS FOR THE MANUFACTURE OF SALE OF APPARATUS WITHOUT WRITTEN PERMISSION.

DRAWN:
WAYNE ROBBINS

DATE:
8-23-98

CHECKED:
PAM JENKINS

DATE:
8-24-98

NorComp

SCALE:	SHEET	OF	REV
	1	1	1

DWG NO. CLINCH-NUT OPTIONS