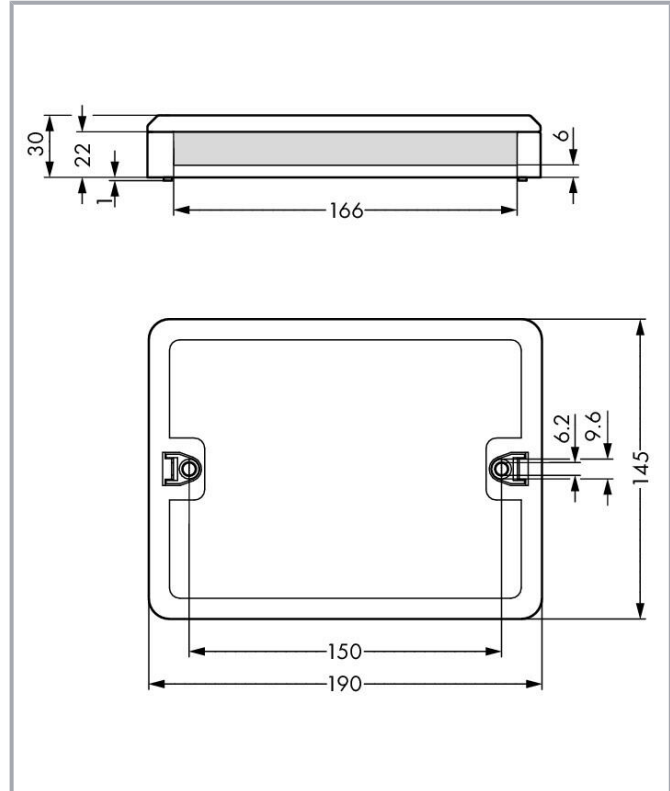


Data sheet | Item number: 899-631

Distribution box; for self-assembly; black

www.wago.com/899-631



Item description

Empty housings *WINSTA*®

Implement the electrical installation quickly and easily: The empty housings from the *WINSTA*® product line is the product of your choice for error-free electrical installation. You can rely on the quality of *WINSTA*® components from WAGO for your electrical installation accessories too.

Lower costs through fast commissioning and elimination of service expenses – solutions from *WINSTA*®

WINSTA® is the pluggable connection system that is optimally tailored to the strict requirements of electrical installation. It offers fast, secure and, above all, error-free installation of components and cables. Enjoy the benefits of the pluggable version of our maintenance-free spring pressure

Subject to changes. Please also observe the further product documentation!

WAGO GmbH & Co. KG
Hansastr. 27
32423 Minden
Phone: +49571 887-0 | Fax: +49571 887-169
Email: info.de@wago.com | Web: www.wago.com

Do you have any questions about our products?
We are always happy to take your call at +49 (571) 887-44222.



connection technology too! Plan your installation with *WINSTA*® distribution boxes from WAGO.

-
- clear slot identification for easy commissioning
- saves time, since no wiring is required at the construction site
- rapid, structured electrical installation

Data

Notes

Note	For easy cable connection, do not arrange the connectors directly next to each other in the distribution box.
------	---

Physical data

Width	190 mm / 7.48 inches
Height	30 mm / 1.181 inches
Depth	145 mm / 5.709 inches

Mechanical Data

Mounting type	Wall, screw mount Installation on mounting plate
---------------	---

Material Data

Note (material data)	Information on material specifications can be found here
----------------------	--

Color	black
Insulation material	Polyamide (PA66)
Flammability class per UL94	V0
Fire load	5.716 MJ
Weight	195.4 g

Environmental requirements

Processing temperature	-5 ... +40 °C
Continuous operating temperature	-35 ... +85 °C
Note on continuous operating temperature	Insulating parts for temperatures ≤ 105 °C

Subject to changes. Please also observe the further product documentation!

WAGO GmbH & Co. KG
Hansastr. 27
32423 Minden
Phone: +49571 887-0 | Fax: +49571 887-169
Email: info.de@wago.com | Web: www.wago.com

Do you have any questions about our products?
We are always happy to take your call at +49 (571) 887-44222.

Commercial data







eCl@ss 10.0	27-44-06-03
eCl@ss 9.0	27-44-06-03
ETIM 8.0	EC002567
ETIM 7.0	EC002567
PU (SPU)	1 pcs
Packaging type	box
Country of origin	DE
GTIN	4055143315630
Customs tariff number	85366990990

Environmental Product Compliance

RoHS Compliance Status	Compliant, No Exemption
------------------------	-------------------------

Optional accessories

Mounting

Mounting accessories		
	Item no.: 890-303 Mounting carrier; 3-pole; for sockets and plugs; Plastic; gray	www.wago.com/890-303
	Item no.: 890-304 Mounting carrier; 4-pole; for sockets and plugs; Plastic; gray	www.wago.com/890-304
	Item no.: 890-305 Mounting carrier; 5-pole; for sockets and plugs; Plastic; gray	www.wago.com/890-305
	Item no.: 770-630 Fixing pin; for distribution boxes; Plastic; gray	www.wago.com/770-630
	Item no.: 890-302 Mounting carrier; 2-pole; for sockets and plugs; Plastic; gray	www.wago.com/890-302
	Item no.: 899-680 Mounting plate; for distribution boxes; gray	www.wago.com/899-680

Subject to changes. Please also observe the further product documentation!

Downloads Documentation

Bid Text

899-631 X81 - Datei	2019 Feb 19	xml 3.0 kB	Download
899-631 doc - Datei	2015 Mar 16	doc 24.6 kB	Download

Environmental Product Compliance

Compliance Search

Environmental Product Compliance 899-631 Distribution box; for self-assembly; black	URL	Download
--	-----	----------

Installation Notes

Installation



Securing the mounting plate with WINSTA®
Distribution Box to the wall (e.g., via stud gun).

Application

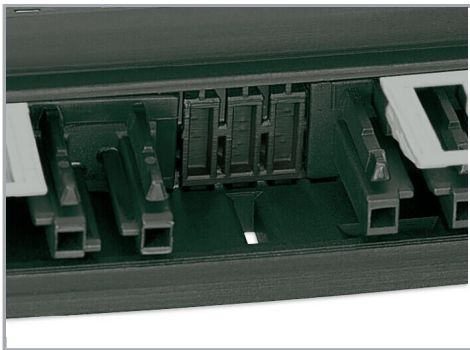
Subject to changes. Please also observe the further product documentation!



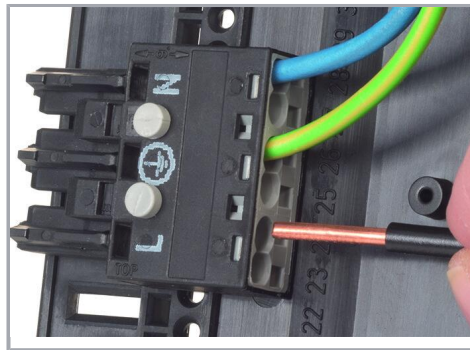
The set includes: 1 bottom, 1 lid, 2 sidewalls and 16 mounting pins.



Remove unrequired sections from the sidewalls.

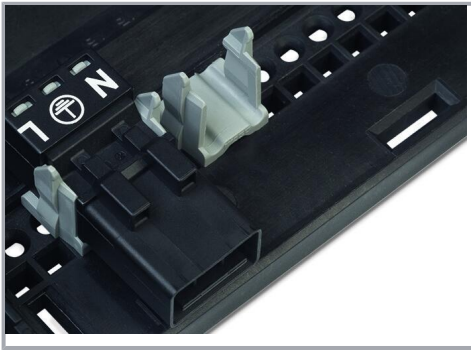


Unassigned slots and spaces are closed by inserting a sidewall.



Using mounting pins to secure WINSTA[®] MIDI connectors in a distribution box.

Subject to changes. Please also observe the further product documentation!



Using adapters to install WINSTA® MINI connectors in a distribution box

Product family

WINSTA® boxes

WINSTA® ist das Steckverbindersystem, das optimal auf die hohen Anforderungen in der Gebäudeinstallation zugeschnitten ist. Es macht die Elektroinstallation steckbar und dadurch schnell, sicher und fehlerfrei. Dies gilt auch in weiteren Anwendungen wie z. B. im Schiffbau, in der Bahntechnik oder in der Industrie.

[Show all products from the family](#)

Subject to changes. Please also observe the further product documentation!