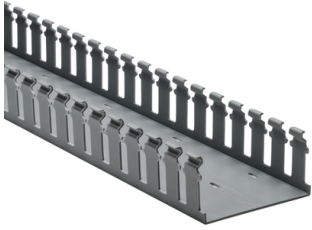


Specification Sheet

Part Number: 181-42008



Strong fingers prevent unwanted breaking.
Restricted opening prevents unintended removal of wires and permits any individual wire to be traced without disconnection.
Supplied with mounting holes to streamline installation.
Optional covers enhance protection and appearance.

Slotted Wall Wiring Duct, 4" x 2", Non-Adhesive, PVC, Gray, 120ft/Carton

Article Number 181-42008

Type SL4X2

Color Gray (GY)

Quantity Per carton

Product Description Pro-Duct slotted wall wiring duct features break-away fingers which provide additional access for wire leads. Each section of the duct is provided with two score lines. The upper score line is used to break away fingers when a greater opening is required. The lower score line allows the sidewall to be smoothly cut for joints and Ts.

Short Description Slotted Wall Wiring Duct, 4" x 2", Non-Adhesive, PVC, Gray, 120ft/Carton

Global Part Name SL4X2-PVC-GY

Length L (Imperial) 6.0

Length L (Metric) 1.83

Fixation Method Non-Adhesive

Width W (Imperial) 4.0

Width W (Metric) 101.6

Height H (Imperial) 2.07

Height H (Metric) 52.6

Mounting Hole Centers (Imperial) 4.0

Material Polyvinylchloride (PVC)

Material Shortcut PVC

Halogen Free No

UV Resistant (Yes/No) No

Operating Temperature +122°F (+50°C)

Reach Compliant (Article 33)	No
ROHS Compliant	Yes
Certification/Specification	CSA UL EN 50085-1:2005 + A1:2013 EN 50085-2-3_1A
UL Recognized (US)	Yes
Package Quantity (Imperial)	120.0
Package Quantity (Metric)	36.58
Customs Number	3925900000

© 2023 HellermannTyton. All Rights Reserved.

[Contact Us](#) [RoHS/WEEE Compliance](#) [Disclaimer](#) [Terms and Conditions](#)