

REV.	LOCAS	DESCRIPTION	DATE	DRAWN
05	△A	變更塑膠材質	2008.10.20	齊凡
06	△B	變更料號	2008.09.11	彭鳳城
07	△7	新增加端子角度尺寸控制	2010.05.11	沈松楨
08	△A	變更圖號修改注解并新增包裝選項	2011.03.30	黃明霞
H1	△A	加嚴端子角度尺寸控制(R-S211101)	2021.11.26	何東華

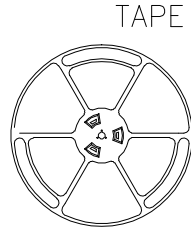
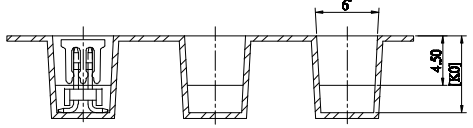
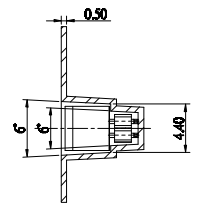
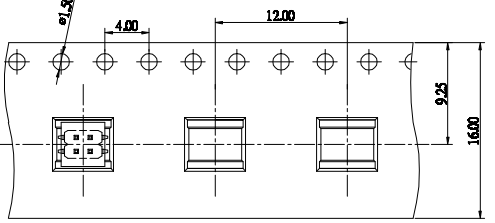
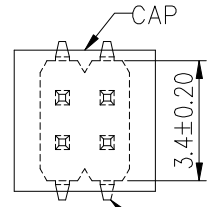
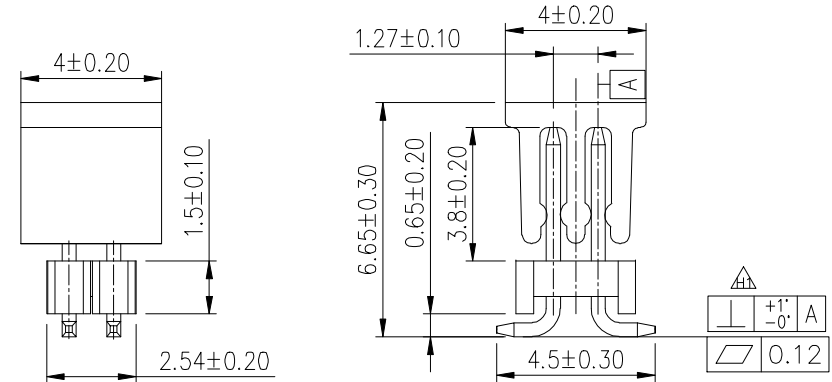
Recommended P.C.Board Layout  
(Tolerance: ±0.05)

Specifications  
 Current Rating: 1Amp  
 Insulation Resistance: 1000MΩMin.  
 Dielectric Withstanding: 300VAC  
 Contact Resistance: 20mΩMax.  
 Operating Temperature: -40°C to +105°C  
 Materials  
 Contact Material: Brass  
 Insulator Material: High Temperature  
 △ Thermoplastic, UL 94V-0 Nylon △△△△△  
 or the equivalent material  
 All materials must meet Greenconn  
 requirement for environment protection.

Ordering Information △

G PEC209-02 XX A037 B 1 B X

Standard Plating 02=Gold Flash  
 Selective Plating 01=Tin  
 05=Gold Flash/Tin  
 Standard Packing C=Tube  
 Selective Packing D=Tape Reel  
 △ F=Cap+Tape&Reel



TAPE & REEL

**Greenconn**  
 Website: www.greenconn.com  
 E-mail: sales@greenconn.com

3RD. ANG PROJ.  
 PAGE. 1/1

GENERAL TOLERANCE	
X. ±5.0°	X. ±0.30
.X. ±3.0°	.X. ±0.25
.XX. ±2.0°	.XX. ±0.15
.XXX. ±1.0°	.XXX. ±0.10

DESIGNED: 何東華 DATE: 2021.11.26  
 CHECKED: 張春進 DATE: 2021.11.26  
 APPROVED: 林萬輝 DATE: 2021.11.26

DWG. NO. △ GPEC209-CA37BB  
 PART NO. △ GPEC209-02XXA037B1BX

TITLE.  
 1.27 PIN HEADER  
 DUAL ROWS SMT TYPE  
 CONNECTOR