

**BILL OF MATERIALS**

NO.	QTY	SUPPLIER	DESCRIPTION	PART No.	SEE NOTE
1	1	ECI	4/4 CIRCUIT PHONE PLUG	90848-0094	1,4
2		NO PREFERRED SUPPLIER	4 CORE CABLE	99036-0122	1,4
3	1	MOLEX	OVERMOULDED GROMMET		1
4	1	MOLEX	16 CCT MOBILE PHONE PLUG ACCESSORY KIT	91172-0001	2
5	1	NO PREFERRED SUPPLIER	BLACK RUBBER BAND	90848-0185	6

**WIRING DIAGRAM :**

CIRCUIT No.	CONDUCTOR No.	CIRCUIT No.	CONDUCTOR COLOUR REF
1	1	16	BLACK
2	2	16	BROWN
3	3	1	RED
4	4	1	WHITE

**2/ CABLE SPECIFICATION : 4 CORE CABLE**

**CABLE TYPE:** FLAT  RIBBON  ROUND  OTHER   
 SPIRAL CABLE YES  NO

**NO. OF CONDUCTORS** 4

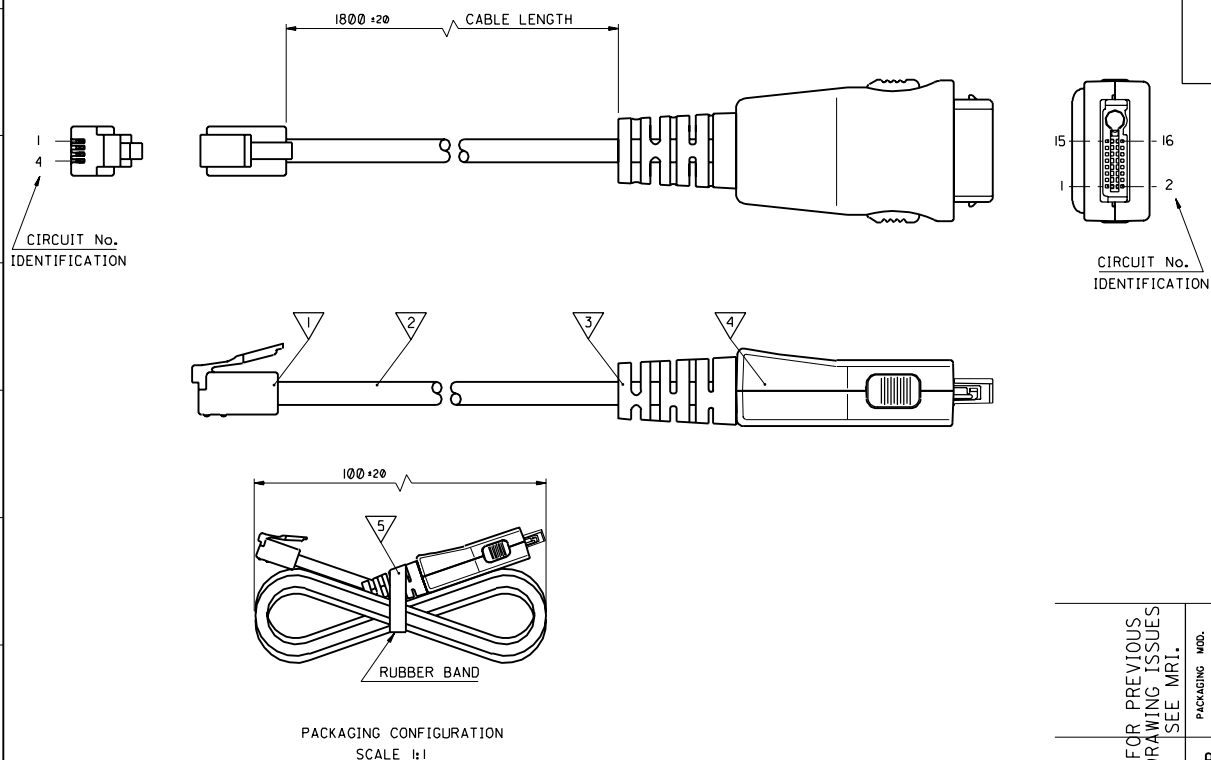
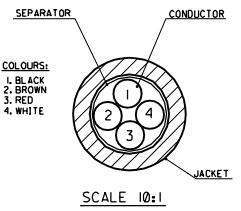
**2. CABLE REQUIREMENTS :** CABLE MUST UNWIND FROM REEL WITH ORIENTATION AS PER DIAGRAM BELOW

**3. CONDUCTOR SPECIFICATIONS :**

CONDUCTOR NO.	CONDUCTOR NO.
1 - 4	
- MATERIAL	TINNED Cu
- A.W.G.	28
- STRANDING QTY/GUAGE	19/40
- TENSILE STRENGTH	N/A
- INSULATION :	
- MATERIAL	PP
- MIN. WALL THICKNESS	0.15
- COLOUR	SEE CABLE DIAGRAM/COLOUR CODE
- OUTSIDE DIAMETER	0.97 ± 0.03
DIRECTION OF LAY	N/A
LENGTH OF LAY	N/A
U.L. RATING	N/A

**5. SEPARATOR :** TYPE \_\_\_\_\_ LAY DIRECTION N/A

**9. CABLE JACKET :** TYPE PVC FINAL DIAMETER 3.58±0.15 MIN. THICKNESS 0.45 COLOUR BLACK FINISH MATT U.L. RATING 90M CSA FT1 HARDNESS 85 SHORE A STRIPABILITY N/A MARKINGS NONE



- NOTES:**
- ONLY AVAILABLE FROM MOLEX AS PART OF A CABLE ASSEMBLY.
  - MATES WITH SERIES 91171 HANDSET CONNECTOR.
  - SEE PRODUCT SPECIFICATION No. PS-99020-0061.
  - SUPPLIER OR CUSTOMER APPROVED EQUIVALENT.
  - ASSEMBLIES TESTED FOR SHORTS AND DISCONTINUITIES BETWEEN ALL CIRCUITS.
  - PARTS TO BE COILED AS SHOWN AND PACKED LOOSELY IN BOXES.

CUSTOMER PART NO. 4356-4404

FOR PREVIOUS DRAWING ISSUES SEE MRI.	PACKAGING MOD. ECN EBR240 97.11.21 JMC	REVISIONS	DRWG BY MK	REVISE ONLY ON CAD SYSTEM	SH. REV.
	DESIGN DIMENSION (PRIMARY) <input type="checkbox"/> IN. (SECONDARY) <input type="checkbox"/> MM	EQUIVALENT DIMENSION (PRIMARY) <input type="checkbox"/> IN. (SECONDARY) <input type="checkbox"/> MM	SCALE 2:1	CAD/CAM FILENAME: SDA-92607.DGN	TITLE: MAINS ADAPTER CABLE
	TOLERANCES UNLESS OTHERWISE SPECIFIED: ± 0.15			THIS DRAWING CONTAINS INFORMATION THAT IS PROPRIETARY TO MOLEX INC. & SHOULD NOT BE USED WITHOUT WRITTEN PERMISSION	
	SHORTS WHERE APPLICABLE MUST REMAIN WITHIN DIMENSIONS			SHEET NO. DATE: 1 OF 1 97/01/16	
PART NO. 92607-0003			DWG NO. SDA-92607-0003		SIZE C

PART NO. 92607-0003  
 DWG NO. SDA-92607-0003