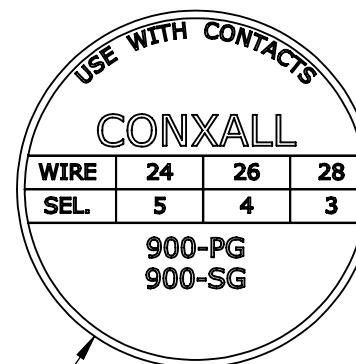
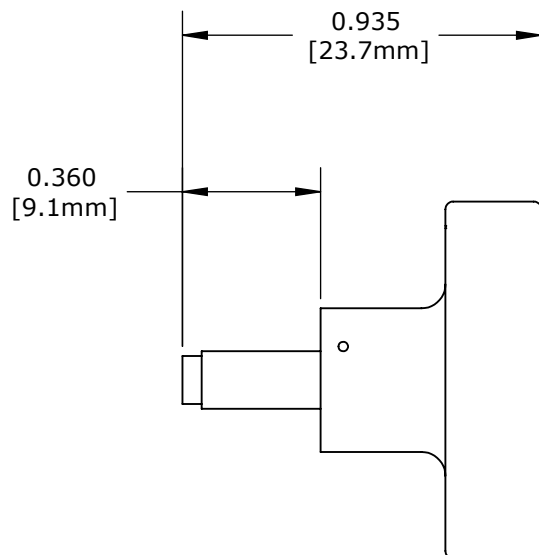


PART NUMBER: 357-127

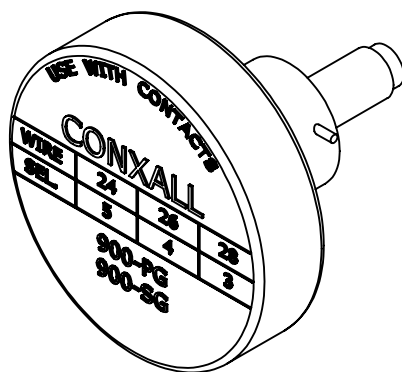
CUSTOMER PRINT

NOTES:

1. USE WITH CXA TOOL NO.: 359-21
2. ALL DIMENSIONS FOR REFERENCE ONLY



Ø 0.930
[23.6mm]



PROPRIETARY

THIS DOCUMENT CONTAINS CONFIDENTIAL INFORMATION PROPRIETARY TO CONXALL CORPORATION. ANY REPRODUCTION, DISCLOSURE, OR USE OF THIS DOCUMENT / INFORMATION IS EXPRESSLY PROHIBITED UNLESS AUTHORIZED IN WRITING BY CONXALL CORPORATION.

DIMENSIONS IN BRACKET [] ARE METRIC.

B	AN	06-15-17	CREATED SHEET PER DOR 17-7819JS	
REV.	INIT.	DATE	DESCRIPTION	
ALL INFORMATION ILLUSTRATED IS THE PROPERTY OF "CONXALL CORPORATION." UNAUTHORIZED DUPLICATION OR DISTRIBUTION OF THIS DOCUMENT IS PROHIBITED.			ORIG. DRAWN BY:	DATE:
ALL UNITS ARE IN FEET, INCHES, FRACTION OF INCHES AND DECIMALS.			PAK	06-10-11
= CRITICAL CHARACTERISTIC FLAG PER SPEC. XXXX			CHECKED BY:	
			APPROVED BY:	
TITLE:			CUSTOMER:	
SCALE	SIZE	SHEET	CRIMP TOOL POSITIONER	
NTS	A	1 OF 1	#26 CONTACT	
FILE:	DIRECTORY:	PART NUMBER:	900-PG & 900-SG	
357-127	SLW	357-127	STANDARD PRODUCT	
			REV	B